

Anti-IP10 antibody ab9807

★★★★★ [9 Abreviews](#) [33 References](#) [画像数 2](#)

製品の概要

製品名	Anti-IP10 antibody
製品の詳細	Rabbit polyclonal to IP10
由来種	Rabbit
アプリケーション	適用あり: WB, Sandwich ELISA
種交差性	交差種: Rat, Human
免疫原	Recombinant full length protein corresponding to Human IP10. Highly pure (>98%) recombinant hIP-10 (human Interferon Inducible Protein 10) Database link: P02778
ポジティブ・コントロール	WB: Recombinant human IP10 protein (ab9810); Recombinant rat IP10 protein (ab75477)
特記事項	<p>Although some customers have been successful in IHC we no longer batch test in this application.</p> <p>The Life Science industry has been in the grips of a reproducibility crisis for a number of years. Abcam is leading the way in addressing this with our range of recombinant monoclonal antibodies and knockout edited cell lines for gold-standard validation. Please check that this product meets your needs before purchasing.</p> <p>If you have any questions, special requirements or concerns, please send us an inquiry and/or contact our Support team ahead of purchase. Recommended alternatives for this product can be found below, along with publications, customer reviews and Q&As</p>

製品の特性

製品の状態	Lyophilized:Reconstitute with 200µl of sterile water.
保存方法	Shipped at 4°C. Store at +4°C short term (1-2 weeks). Upon delivery aliquot. Store at -20°C long term.
バッファー	No preservative, sterile filtered
精製度	Immunogen affinity purified
ポリ/モノ	ポリクローナル
アイソタイプ	IgG
軽鎖の種類	unknown

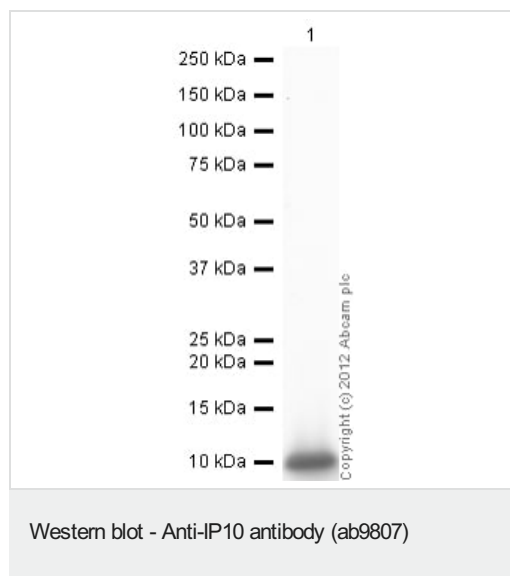
The Abpromise guarantee Abpromise保証は、 次のテスト済みアプリケーションにおけるab9807の使用に適用されます
アプリケーションノートには、推奨の開始希釈率がありますが、適切な希釈率につきましてはご確認ください。

アプリケーション	Abreviews	特記事項
WB		Use at an assay dependent concentration. To detect hIP-10 by Western Blot analysis this antibody can be used at a concentration of 0.1 - 0.2 µg/ml. Used in conjunction with compatible secondary reagents the detection limit for recombinant hIP-10 is 1.5 - 3.0 ng/lane, under either reducing or non-reducing conditions.
Sandwich ELISA		Use at an assay dependent concentration. To detect hIP-10 by direct ELISA (using 100 µl/well antibody solution) a concentration of 0.5 - 2.0 µg/ml of this antibody is required. This antigen affinity purified antibody, in conjunction with biotinylated anti-IP10 antibody (ab271283), allows the detection of 0.2 - 0.4 ng/well of recombinant hIP-10.

ターゲット情報

機能	Chemotactic for monocytes and T-lymphocytes. Binds to CXCR3.
配列類似性	Belongs to the intercrine alpha (chemokine CxC) family.
翻訳後修飾	CXCL10(1-73) is produced by proteolytic cleavage after secretion from keratinocytes.
細胞内局在	Secreted.

画像



Anti-IP10 antibody (ab9807) at 1 µg/ml + Recombinant rat IP10 protein (**ab75477**) at 0.1 µg

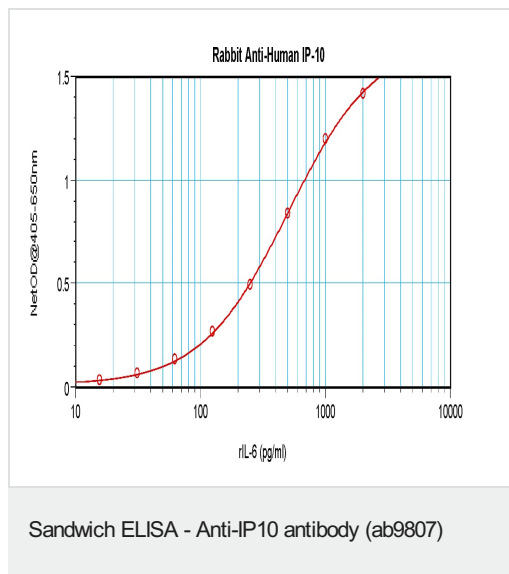
Secondary

Goat Anti-Rabbit IgG H&L (HRP) preadsorbed (**ab97080**) at 1/5000 dilution

Developed using the ECL technique.

Performed under reducing conditions.

Exposure time: 30 seconds



ab9807 detecting IP-10 by sandwich ELISA.

Please note: All products are "FOR RESEARCH USE ONLY. NOT FOR USE IN DIAGNOSTIC PROCEDURES"

Our Abpromise to you: Quality guaranteed and expert technical support

- Replacement or refund for products not performing as stated on the datasheet
- Valid for 12 months from date of delivery
- Response to your inquiry within 24 hours
- We provide support in Chinese, English, French, German, Japanese and Spanish
- Extensive multi-media technical resources to help you
- We investigate all quality concerns to ensure our products perform to the highest standards

If the product does not perform as described on this datasheet, we will offer a refund or replacement. For full details of the Abpromise, please visit <https://www.abcam.co.jp/abpromise> or contact our technical team.

Terms and conditions

- Guarantee only valid for products bought direct from Abcam or one of our authorized distributors