

# Anti-Involucrin antibody ab53112

★★★★★ [7 Abreviews](#) [41 References](#) [画像数 3](#)

### 製品の概要

---

製品名	Anti-Involucrin antibody
製品の詳細	Rabbit polyclonal to Involucrin
由来種	Rabbit
アプリケーション	<b>適用あり:</b> ICC/IF, ELISA, WB, IHC-P
種交差性	<b>交差種:</b> Human
免疫原	A synthetic peptide derived from human Involucrin.
特記事項	<p>The Life Science industry has been in the grips of a reproducibility crisis for a number of years. Abcam is leading the way in addressing this with our range of recombinant monoclonal antibodies and knockout edited cell lines for gold-standard validation. Please check that this product meets your needs before purchasing.</p> <p>If you have any questions, special requirements or concerns, please send us an inquiry and/or contact our Support team ahead of purchase. Recommended alternatives for this product can be found below, along with publications, customer reviews and Q&amp;As</p>

### 製品の特性

---

製品の状態	Liquid
保存方法	Shipped at 4°C. Store at -20°C. Stable for 12 months at -20°C.
バッファー	pH: 7.40 Preservative: 0.02% Sodium azide Constituents: 50% Glycerol, 0.87% Sodium chloride, PBS
精製度	Without Mg+2 and Ca+2 Immunogen affinity purified
特記事項(精製)	ab53112 was affinity purified from rabbit antiserum by affinity chromatography using epitope-specific immunogen.
ポリ/モノ	ポリクローナル
アイソタイプ	IgG

### アプリケーション

---

## The Abpromise guarantee

**Abpromise保証は、次のテスト済みアプリケーションにおけるab53112の使用に適用されます**

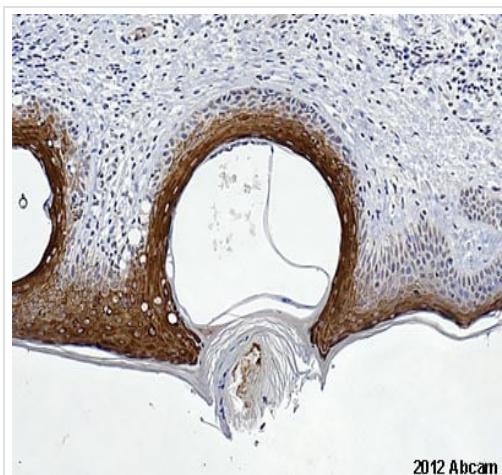
アプリケーションノートには、推奨の開始希釈率がありますが、適切な希釈率につきましてはご検討ください。

アプリケーション	Abreviews	特記事項
ICC/IF		Use at an assay dependent concentration. PubMed: 21067603
ELISA		Use at an assay dependent concentration.
WB		1/300 - 1/1000. Detects a band of approximately 68 kDa (predicted molecular weight: 68 kDa).
IHC-P	★★★★★ (5)	Use at an assay dependent concentration.

## ターゲット情報

機能	Part of the insoluble cornified cell envelope (CE) of stratified squamous epithelia.
組織特異性	Keratinocytes of epidermis and other stratified squamous epithelia.
配列類似性	Belongs to the involucrin family.
翻訳後修飾	Substrate of transglutaminase. Some glutamines and lysines are cross-linked to other involucrin molecules, to other proteins such as keratin, desmoplakin, periplakin and envoplakin, and to lipids like omega-hydroxyceramide.
細胞内局在	Cytoplasm. Constituent of the scaffolding of the cornified envelope.

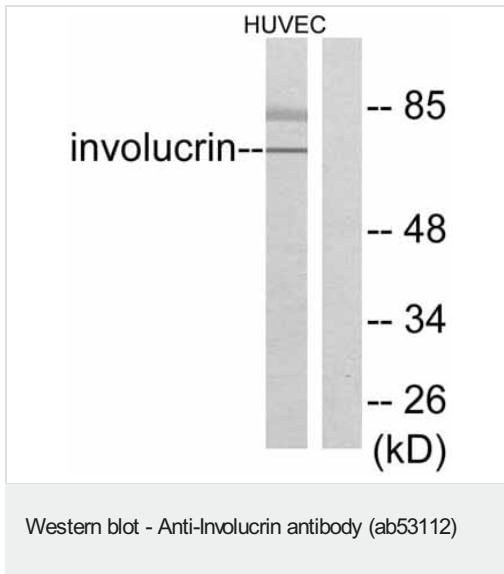
## 画像



ab53112 staining human skin sections by IHC-P. The tissue was fixed with formaldehyde and a heat mediated antigen retrieval step was performed with citric acid pH 6. Blocking of the sample was done with 1% BSA for 10 minutes at 21°C, followed by staining with ab53112 at 1/150 in TBS/BSA/azide for 16h at 21°C. A biotinylated goat anti-rabbit polyclonal antibody at 1/200 was used as the secondary antibody.

Immunohistochemistry (Formalin/PFA-fixed paraffin-embedded sections) - Anti-Involucrin antibody (ab53112)

This image is courtesy of an Abreview submitted by Carl Hobbs



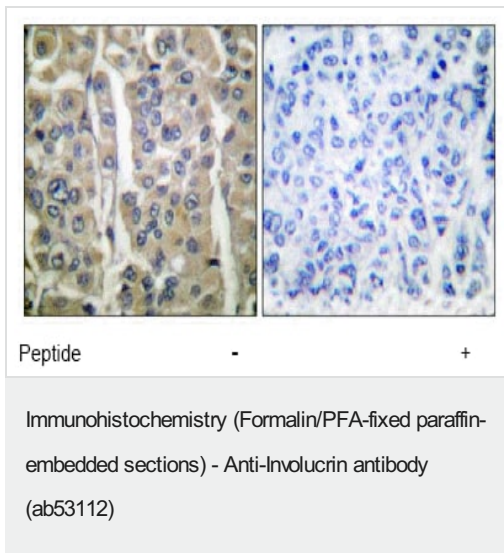
**All lanes** : Anti-Involucrin antibody (ab53112) at 1/300 dilution

**Lane 1** : HuvEc cell extract

**Lane 2** : HuvEc cell extract with immunising peptide

**Predicted band size:** 68 kDa

**Observed band size:** 68 kDa



ab53112 at 1/50 dilution staining Involucrin in human breast carcinoma by Immunohistochemistry, Paraffin embedded tissue, in the absence and presence of the immunising peptide.

**Please note:** All products are "FOR RESEARCH USE ONLY. NOT FOR USE IN DIAGNOSTIC PROCEDURES"

### Our Abpromise to you: Quality guaranteed and expert technical support

- Replacement or refund for products not performing as stated on the datasheet
- Valid for 12 months from date of delivery
- Response to your inquiry within 24 hours
- We provide support in Chinese, English, French, German, Japanese and Spanish
- Extensive multi-media technical resources to help you
- We investigate all quality concerns to ensure our products perform to the highest standards

If the product does not perform as described on this datasheet, we will offer a refund or replacement. For full details of the Abpromise, please visit <https://www.abcam.co.jp/abpromise> or contact our technical team.

## Terms and conditions

---

- Guarantee only valid for products bought direct from Abcam or one of our authorized distributors