


Anti-Integrin beta 4 (phospho Y1526) antibody ab29044

★★★★★ [1 Abreviews](#) [1 References](#) [画像数 1](#)

製品の概要

製品名	Anti-Integrin beta 4 (phospho Y1526) antibody
製品の詳細	Rabbit polyclonal to Integrin beta 4 (phospho Y1526)
由来種	Rabbit
特異性	The immunogen sequence used is found in all three integrin beta4 isoforms and is highly conserved in rat and mouse integrin beta4.
アプリケーション	適用あり: WB
種交差性	交差種: Human 交差が予測される動物種: Mouse, Rat 
免疫原	Synthetic peptide corresponding to Human Integrin beta 4 (phospho Y1526) conjugated to keyhole limpet haemocyanin.
ポジティブ・コントロール	A431 and src-transformed Hct116 cells treated with pervanadate.
特記事項	<p>The cytoplasmic domain of the integrin-β4 subunit recruits the adaptor protein Shc and is required for assembly of hemidesmosomes. Tyrosine phosphorylation of multiple sites within the cytoplasmic domain regulates these cellular events. In particular, tyrosine 1526 interacts with the phosphotyrosine binding domain of Shc and is required for Shc activation. In addition, tyrosine 1494 is required for integrin-mediated IRS-2 phosphorylation and activation of PI3-kinase. More importantly, this site is critical for integrin α6β4 increases in carcinoma invasion.</p> <p>The Life Science industry has been in the grips of a reproducibility crisis for a number of years. Abcam is leading the way in addressing this with our range of recombinant monoclonal antibodies and knockout edited cell lines for gold-standard validation. Please check that this product meets your needs before purchasing.</p> <p>If you have any questions, special requirements or concerns, please send us an inquiry and/or contact our Support team ahead of purchase. Recommended alternatives for this product can be found below, along with publications, customer reviews and Q&As</p>

製品の特性

製品の状態	Liquid
保存方法	Shipped at 4°C. Store at -20°C.
バッファー	Preservative: 0.05% Sodium azide

	Constituents: PBS, 50% Glycerol, 0.1% BSA
精製度	Immunogen affinity purified
特記事項 (精製)	This antibody was cross-adsorbed to phospho-tyrosine coupled to agarose and to dephosphorylated integrin beta4 (Tyr-1526) peptide before affinity purification using phospho-integrin beta-4(Tyr-1526) peptide (without carrier).
一次抗体 備考	The cytoplasmic domain of the integrin-β4 subunit recruits the adaptor protein Shc and is required for assembly of hemidesmosomes. Tyrosine phosphorylation of multiple sites within the cytoplasmic domain regulates these cellular events. In particular, tyrosine 1526 interacts with the phosphotyrosine binding domain of Shc and is required for Shc activation. In addition, tyrosine 1494 is required for integrin-mediated IRS-2 phosphorylation and activation of PI3-kinase. More importantly, this site is critical for integrin α6β4 increases in carcinoma invasion.
ポリ/モノ	ポリクローナル
アイソタイプ	IgG

アプリケーション

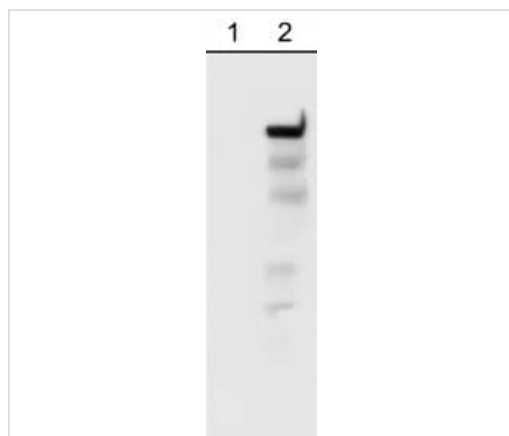
The Abpromise guarantee **Abpromise保証は、次のテスト済みアプリケーションにおけるab29044の使用に適用されます**
 アプリケーションノートには、推奨の開始希釈率がありますが、適切な希釈率につきましてはご検討ください。

アプリケーション	Abreviews	特記事項
WB	★★★★★ (1)	1/1000. Detects a band of approximately 202 kDa.

ターゲット情報

機能	Integrin alpha-6/beta-4 is a receptor for laminin. It plays a critical structural role in the hemidesmosome of epithelial cells.
組織特異性	Integrin alpha-6/beta-4 is predominantly expressed by epithelia. Isoform beta-4D is also expressed in colon and placenta. Isoform beta-4E is also expressed in epidermis, lung, duodenum, heart, spleen and stomach.
関連疾患	Defects in ITGB4 are a cause of epidermolysis bullosa letalis with pyloric atresia (EB-PA) [MIM:226730]; also known as junctional epidermolysis bullosa with pyloric atresia (PA-JEB) or aplasia cutis congenita with gastrointestinal atresia. EB-PA is an autosomal recessive, frequently lethal, epidermolysis bullosa with variable involvement of skin, nails, mucosa, and with variable effects on the digestive system. It is characterized by mucocutaneous fragility, aplasia cutis congenita, and gastrointestinal atresia, which most commonly affects the pylorus. Pyloric atresia is a primary manifestation rather than a scarring process secondary to epidermolysis bullosa. Defects in ITGB4 are a cause of generalized atrophic benign epidermolysis bullosa (GABEB) [MIM:226650]. GABEB is a non-lethal, adult form of junctional epidermolysis bullosa characterized by life-long blistering of the skin, associated with hair and tooth abnormalities.
配列類似性	Belongs to the integrin beta chain family. Contains 1 Calx-beta domain. Contains 4 fibronectin type-III domains. Contains 1 PSI domain. Contains 1 VWFA domain.
ドメイン	The fibronectin type-III-like domains bind BPAG1 and plectin and probably also recruit BP230.

画像



Western blot - Anti-Integrin beta 4 (phospho Y1526)
antibody (ab29044)

All lanes : Anti-Integrin beta 4 (phospho Y1526) antibody
(ab29044)

Lane 1 : A431 cell lysate, starved

Lane 2 : A431 cell lysate, treated with pervanadate for 30 min

The top band in each lane is 200 kDa.

Please note: All products are "FOR RESEARCH USE ONLY. NOT FOR USE IN DIAGNOSTIC PROCEDURES"

Our Abpromise to you: Quality guaranteed and expert technical support

- Replacement or refund for products not performing as stated on the datasheet
- Valid for 12 months from date of delivery
- Response to your inquiry within 24 hours
- We provide support in Chinese, English, French, German, Japanese and Spanish
- Extensive multi-media technical resources to help you
- We investigate all quality concerns to ensure our products perform to the highest standards

If the product does not perform as described on this datasheet, we will offer a refund or replacement. For full details of the Abpromise, please visit <https://www.abcam.co.jp/abpromise> or contact our technical team.

Terms and conditions

- Guarantee only valid for products bought direct from Abcam or one of our authorized distributors