

Anti-Integrin beta 3 antibody [EPR2342] ab119992

リコンビナント **RabMAb**

29 References **画像数 4**

製品の概要

製品名	Anti-Integrin beta 3 antibody [EPR2342]
製品の詳細	Rabbit monoclonal [EPR2342] to Integrin beta 3
由来種	Rabbit
アプリケーション	適用あり: Flow Cyt (Intra), WB, IP
種交差性	交差種: Mouse, Rat, Human
免疫原	Synthetic peptide. This information is proprietary to Abcam and/or its suppliers.
ポジティブ・コントロール	Flow Cyt (intra): HUVEC cells. IP: HUVEC whole cell lysate WB: U-87MG, HEL, HUVEC and C2C12 whole cell lysate.
特記事項	<p>This product is a recombinant monoclonal antibody, which offers several advantages including:</p> <ul style="list-style-type: none"> - High batch-to-batch consistency and reproducibility - Improved sensitivity and specificity - Long-term security of supply - Animal-free production <p>For more information see here.</p> <p>Our RabMAb[®] technology is a patented hybridoma-based technology for making rabbit monoclonal antibodies. For details on our patents, please refer to RabMAb[®] patents.</p>

製品の特性

製品の状態	Liquid
保存方法	Shipped at 4°C. Store at -20°C. Stable for 12 months at -20°C.
バッファー	<p>pH: 7.20</p> <p>Preservative: 0.01% Sodium azide</p> <p>Constituents: 0.05% BSA, 40% Glycerol (glycerin, glycerine), 59% PBS</p>
精製度	Protein A purified
ポリ/モノ	モノクローナル
クローン名	EPR2342
アイソタイプ	IgG

アプリケーション

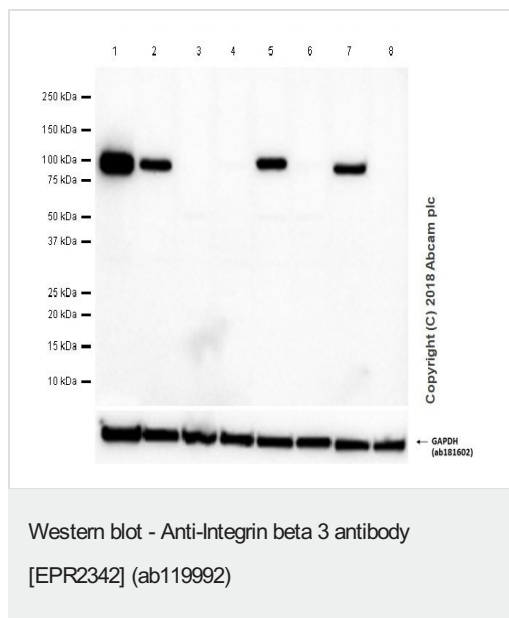
The Abpromise guarantee **Abpromise保証は、** 次のテスト済みアプリケーションにおけるab119992の使用に適用されます
アプリケーションノートには、推奨の開始希釈率がありますが、適切な希釈率につきましてはご検討ください。

アプリケーション	Abreviews	特記事項
Flow Cyt (Intra)		1/20.
WB		1/1000. Detects a band of approximately 110 kDa (predicted molecular weight: 87 kDa).
IP		1/20.

ターゲット情報

機能	Integrin alpha-V/beta-3 is a receptor for cytotactin, fibronectin, laminin, matrix metalloproteinase-2, osteopontin, osteomodulin, prothrombin, thrombospondin, vitronectin and von Willebrand factor. Integrin alpha-IIb/beta-3 is a receptor for fibronectin, fibrinogen, plasminogen, prothrombin, thrombospondin and vitronectin. Integrins alpha-IIb/beta-3 and alpha-V/beta-3 recognize the sequence R-G-D in a wide array of ligands. Integrin alpha-IIb/beta-3 recognizes the sequence H-H-L-G-G-G-A-K-Q-A-G-D-V in fibrinogen gamma chain. Following activation integrin alpha-IIb/beta-3 brings about platelet/platelet interaction through binding of soluble fibrinogen. This step leads to rapid platelet aggregation which physically plugs ruptured endothelial surface. In case of HIV-1 infection, the interaction with extracellular viral Tat protein seems to enhance angiogenesis in Kaposi's sarcoma lesions.
組織特異性	Isoform beta-3A and isoform beta-3C are widely expressed. Isoform beta-3A is specifically expressed in osteoblast cells; isoform beta-3C is specifically expressed in prostate and testis.
関連疾患	Defects in ITGB3 are a cause of Glanzmann thrombasthenia (GT) [MIM:273800]; also known as thrombasthenia of Glanzmann and Naegeli. GT is the most common inherited disease of platelets. It is an autosomal recessive disorder characterized by mucocutaneous bleeding of mild-to-moderate severity and the inability of this integrin to recognize macromolecular or synthetic peptide ligands. GT has been classified clinically into types I and II. In type I, platelets show absence of the glycoprotein IIb/beta-3 complexes at their surface and lack fibrinogen and clot retraction capability. In type II, the platelets express the glycoprotein IIb/beta-3 complex at reduced levels (5-20% controls), have detectable amounts of fibrinogen, and have low or moderate clot retraction capability. The platelets of GT 'variants' have normal or near normal (60-100%) expression of dysfunctional receptors.
配列類似性	Belongs to the integrin beta chain family. Contains 1 VWFA domain.
翻訳後修飾	Phosphorylated on tyrosine residues in response to thrombin-induced platelet aggregation. Probably involved in outside-in signaling. A peptide (AA 740-762) is capable of binding GRB2 only when both Tyr-773 and Tyr-785 are phosphorylated. Phosphorylation of Thr-779 inhibits SHC binding.
細胞内局在	Membrane.

画像



All lanes : Anti-Integrin beta 3 antibody [EPR2342] (ab119992) at 1/1000 dilution

Lane 1 : U-87MG (Human glioblastoma-astrocytoma epithelial cell) whole cell lysate

Lane 2 : HEL (Human Erythroleukemia erythroblast) whole cell lysate

Lane 3 : LnCaP (Human prostate carcinoma epithelial cell) whole cell lysate

Lane 4 : HeLa (Human cervix adenocarcinoma epithelial cell) whole cell lysate

Lane 5 : HUVEC (Human umbilical vein endothelial cell) whole cell lysate

Lane 6 : PC-3 (Human prostate adenocarcinoma epithelial cell) whole cell lysate

Lane 7 : C2C12 (Mouse myoblasts myoblast) whole cell lysate

Lane 8 : Raw264.7 (Mouse Abelson murine leukemia virus-induced tumor macrophage) whole cell lysate

Lysates/proteins at 20 µg per lane.

Secondary

All lanes : Goat Anti-Rabbit IgG H&L (HRP) ([ab97051](#)) at 1/20000 dilution

Predicted band size: 87 kDa

Observed band size: 110 kDa

Exposure time: 40 seconds

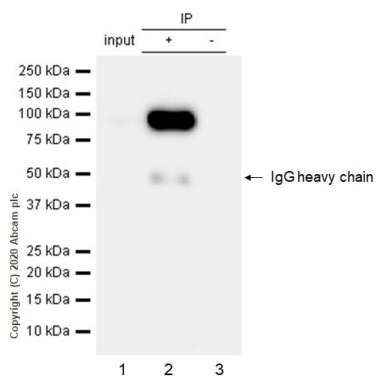
Blocking buffer and concentration: 5% NFDM/TBST.

Diluting buffer and concentration: 5% NFDM/TBST.

[ab181602](#) was used as a loading control.

LnCaP, HeLa and PC-3 are low expression cell lines (PMID: 21867506, PMID: 25248000).

Though there are publications stating expression of Integrin beta 3 in RAW264.7, ab119992 and [ab179473](#) show negative in Raw264.7.



Immunoprecipitation - Anti-Integrin beta 3 antibody
[EPR2342] (ab119992)

Purified ab119992 at 1:20 dilution (0.7 µg) immunoprecipitating Integrin beta 3 in HUVEC whole cell lysate.

Lane 1 (input): HUVEC (Human umbilical vein endothelial cell) whole cell lysate 10 µg.

Lane 2 (+): ab119992 + HUVEC whole cell lysate.

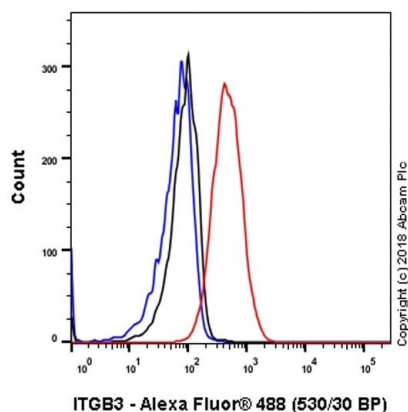
Lane 3 (-): Rabbit monoclonal IgG (**ab172730**) instead of ab119992 in HUVEC whole cell lysate.

VeriBlot for IP Detection Reagent (HRP)(**ab131366**) (1:1000 dilution) was used for Western blotting.

Blocking Buffer and concentration: 5% NFDM/TBST.

Diluting buffer and concentration: 5% NFDM/TBST.

Observed band size: 110 kDa



Flow Cytometry (Intracellular) - Anti-Integrin beta 3
antibody [EPR2342] (ab119992)

Intracellular flow cytometric analysis of 4% paraformaldehyde-fixed, 90% methanol permeabilized HUVEC (Human umbilical vein endothelial cell) cell line labeling Integrin beta 3 with ab119992 at 1/20 (red) compared with a Rabbit monoclonal IgG (**ab172730**) (black) and an unlabeled control (cells without incubation with primary antibody and secondary antibody) (blue). Goat anti rabbit IgG (Alexa Fluor® 488, **ab150077**), at 1/2000 dilution was used as the secondary antibody.

Why choose a recombinant antibody?



Research with confidence
Consistent and reproducible results



Long-term and scalable supply
Recombinant technology



Success from the first experiment
Confirmed specificity



Ethical standards compliant
Animal-free production

Anti-Integrin beta 3 antibody [EPR2342] (ab119992)

Please note: All products are "FOR RESEARCH USE ONLY. NOT FOR USE IN DIAGNOSTIC PROCEDURES"

Our Abpromise to you: Quality guaranteed and expert technical support

- Replacement or refund for products not performing as stated on the datasheet
- Valid for 12 months from date of delivery
- Response to your inquiry within 24 hours
- We provide support in Chinese, English, French, German, Japanese and Spanish
- Extensive multi-media technical resources to help you
- We investigate all quality concerns to ensure our products perform to the highest standards

If the product does not perform as described on this datasheet, we will offer a refund or replacement. For full details of the Abpromise, please visit <https://www.abcam.co.jp/abpromise> or contact our technical team.

Terms and conditions

- Guarantee only valid for products bought direct from Abcam or one of our authorized distributors