

Anti-Integrin alpha V antibody [EPR16800] ab179475

リコンビナント **RabMAb**

★★★★★ **10 Abreviews** **57 References** 画像数 **12**

製品の概要

製品名	Anti-Integrin alpha V antibody [EPR16800]
製品の詳細	Rabbit monoclonal [EPR16800] to Integrin alpha V
由来種	Rabbit
アプリケーション	適用あり: WB, IP, ICC/IF, IHC-P
種交差性	交差種: Mouse, Rat, Human
免疫原	Recombinant fragment. This information is proprietary to Abcam and/or its suppliers.
ポジティブ・コントロール	WB: HUVEC, HT-29, A549, C6 and NIH/3T3 whole cell lysates; Human fetal kidney and fetal brain lysates; Mouse brain, kidney and spleen lysates; Rat brain and kidney lysates. IHC: Human kidney, human transitional cell carcinoma of bladder and mouse kidney tissues. ICC/IF: A549 cells. IP: A549 whole cell extract.
特記事項	<p>This product is a recombinant monoclonal antibody, which offers several advantages including:</p> <ul style="list-style-type: none"> - High batch-to-batch consistency and reproducibility - Improved sensitivity and specificity - Long-term security of supply - Animal-free production <p>For more information see here.</p> <p>Our RabMAb[®] technology is a patented hybridoma-based technology for making rabbit monoclonal antibodies. For details on our patents, please refer to RabMAb[®] patents.</p>

製品の特性

製品の状態	Liquid
保存方法	Shipped at 4°C. Store at +4°C short term (1-2 weeks). Upon delivery aliquot. Store at -20°C long term. Avoid freeze / thaw cycle.
バッファー	Preservative: 0.01% Sodium azide Constituents: PBS, 40% Glycerol, 0.05% BSA
精製度	Protein A purified
ポリ/モノ	モノクローナル
クローン名	EPR16800

アプリケーション

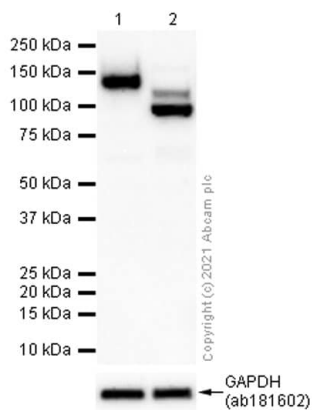
The Abpromise guarantee Abpromise保証は、 次のテスト済みアプリケーションにおけるab179475の使用に適用されます
アプリケーションノートには、推奨の開始希釈率がありますが、適切な希釈率につきましてはご検討ください。

アプリケーション	Abreviews	特記事項
WB	★★★★★ (4)	1/5000. Detects a band of approximately 125, 135 kDa (predicted molecular weight: 116 kDa).
IP		1/40.
ICC/IF	★★★★★ (3)	1/500.
IHC-P	★★★★★ (3)	1/500. Perform heat mediated antigen retrieval with Tris/EDTA buffer pH 9.0 before commencing with IHC staining protocol.

ターゲット情報

機能	The alpha-V integrins are receptors for vitronectin, cytotactin, fibronectin, fibrinogen, laminin, matrix metalloproteinase-2, osteopontin, osteomodulin, prothrombin, thrombospondin and vWF. They recognize the sequence R-G-D in a wide array of ligands. In case of HIV-1 infection, the interaction with extracellular viral Tat protein seems to enhance angiogenesis in Kaposi's sarcoma lesions.
配列類似性	Belongs to the integrin alpha chain family. Contains 7 FG-GAP repeats.
細胞内局在	Membrane.

画像



Western blot - Anti-Integrin alpha V antibody
[EPR16800] (ab179475)

All lanes : Anti-Integrin alpha V antibody [EPR16800] (ab179475)
at 1/1000 dilution

Lane 1 : Untreated HeLa (Human cervix adenocarcinoma epithelial cell) whole cell lysate. with NFDm/TBST

Lane 2 : HeLa (Human cervix adenocarcinoma epithelial cell) whole cell lysate treated with PNGase F. with NFDm/TBST

Lysates/proteins at 15 µg per lane.

Blocking peptides at 5 % per lane.

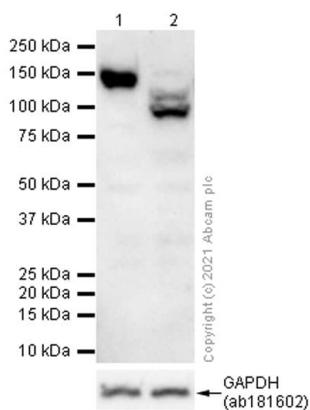
Secondary

All lanes : Goat Anti-Rabbit IgG H&L (HRP) (**ab97051**) at 1/20000 dilution (Goat Anti-Rabbit IgG, (H+L), Peroxidase conjugated.)

Predicted band size: 116 kDa

Observed band size: 116.135 kDa

Exposure time: 20 seconds



Western blot - Anti-Integrin alpha V antibody
[EPR16800] (ab179475)

All lanes : Anti-Integrin alpha V antibody [EPR16800] (ab179475)
at 1/1000 dilution

Lane 1 : Untreated K-562 (Human chronic myelogenous leukemia lymphoblast) whole cell lysate. with NFDm/TBST

Lane 2 : K-562 (Human chronic myelogenous leukemia lymphoblast) treated with PNGase F whole cell lysate. with NFDm/TBST

Lysates/proteins at 15 µg per lane.

Blocking peptides at 5 % per lane.

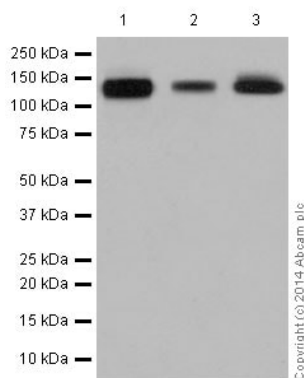
Secondary

All lanes : Goat Anti-Rabbit IgG H&L (HRP) (**ab97051**) at 1/20000 dilution (Goat Anti-Rabbit IgG, (H+L), Peroxidase conjugated.)

Predicted band size: 116 kDa

Observed band size: 116.135 kDa

Exposure time: 80 seconds



Western blot - Anti-Integrin alpha V antibody
[EPR16800] (ab179475)

All lanes : Anti-Integrin alpha V antibody [EPR16800] (ab179475)
at 1/50000 dilution

Lane 1 : HUVEC (Human umbilical vein endothelial cell line) whole
cell lysates

Lane 2 : HT-29 (Human colorectal adenocarcinoma cells) whole
cell lysates

Lane 3 : A549 (Human lung carcinoma) whole cell lysates

Lysates/proteins at 20 µg per lane.

Secondary

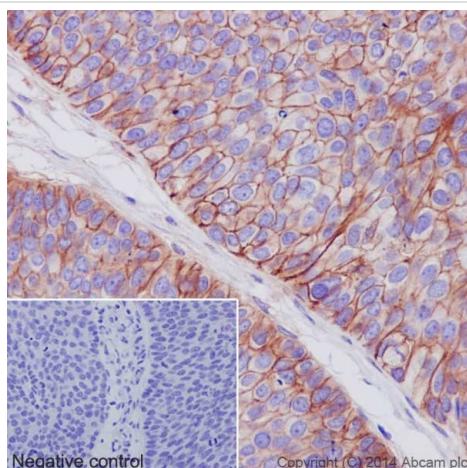
All lanes : Goat Anti-Rabbit IgG, (H+L), Peroxidase conjugated at
1/1000 dilution

Predicted band size: 116 kDa

Observed band size: 125 kDa

Blocking/dilution buffer: 5% NFDM/TBST.

ab179475 can recognize 135kDa full length Integrin alpha V and
125kDa heavy chain. The 125 kDa band is Integrin alpha V heavy
chain.



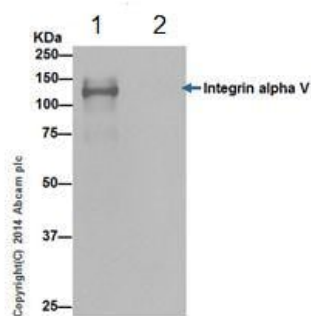
Immunohistochemistry (Formalin/PFA-fixed paraffin-
embedded sections) - Anti-Integrin alpha V antibody
[EPR16800] (ab179475)

Immunohistochemical analysis of paraffin-embedded human
transitional cell carcinoma of bladder tissue labeling Integrin alpha
V with ab179475 at 1/500 dilution followed by Goat Anti-Rabbit
HRP (IgG H&L) ([ab97051](#)) secondary antibody at 1/500 dilution.

Membrane and weak cytoplasm staining on human transitional cell
carcinoma of bladder is observed. Counterstained with hematoxylin.

Negative control: Using PBS instead of primary antibody,
secondary antibody is Goat Anti-Rabbit IgG H&L (HRP) ([ab97051](#))
at 1/500 dilution.

Perform heat mediated antigen retrieval with Tris/EDTA buffer pH
9.0 before commencing with IHC staining protocol.



Immunoprecipitation - Anti-Integrin alpha V antibody [EPR16800] (ab179475)

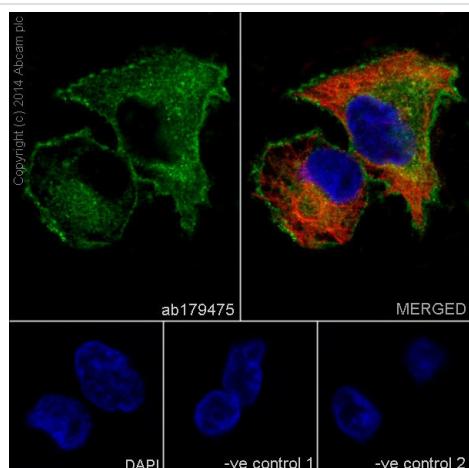
Integrin alpha V was immunoprecipitated from 1 mg of A549 (Human lung carcinoma) whole cell extract with ab179475 at 1/40 dilution. Western blot analysis was performed from the immunoprecipitate using ab179475 at 1/1000 dilution. Anti-Rabbit IgG (HRP), specific to the non-reduced form of IgG, was used as secondary antibody at 1/1500 dilution.

Lane 1: A549 whole cell extract.

Lane 2: PBS instead of A549 whole cell extract.

Blocking/Dilution buffer: 5% NFDM/TBST.

ab179475 can recognize 135kDa full length Integrin alpha V and 125kDa heavy chain. The 125 kDa band is Integrin alpha V heavy chain.



Immunocytochemistry/ Immunofluorescence - Anti-Integrin alpha V antibody [EPR16800] (ab179475)

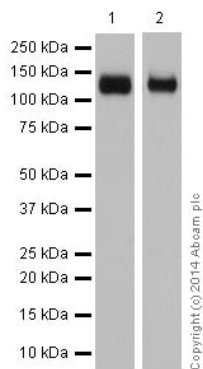
Immunofluorescent analysis of 100% methanol-fixed, 0.1% Triton X-100 permeabilized A549 (Human lung carcinoma) cells labeling Integrin alpha V with ab179475 at 1/500 dilution, followed by Goat anti-rabbit Alexa Fluor[®] 488 (IgG) (**ab150077**) secondary antibody at 1/400 dilution (green).

Confocal image showing membrane and cytoplasm staining on A549 cell line. The nuclear counterstain is DAPI (blue). Tubulin is detected with **ab7291** (anti-Tubulin mouse mAb) at 1/500 dilution and **ab150120** (goat anti-mouse AlexaFluor[®]594 secondary antibody) at 1/500 dilution (red).

The negative controls are as follows:

-ve control 1: ab179475 at 1/500 dilution followed by **ab150120** (AlexaFluor[®]594 Goat anti-Mouse secondary) at 1/500 dilution.

-ve control 2: **ab7291** (anti-Tubulin mouse mAb) at 1/500 dilution followed by **ab150077** (Alexa Fluor[®]488 Goat Anti-Rabbit IgG H&L) at 1/400 dilution.



Western blot - Anti-Integrin alpha V antibody
[EPR16800] (ab179475)

All lanes : Anti-Integrin alpha V antibody [EPR16800] (ab179475)
at 1/5000 dilution

Lane 1 : Human fetal kidney lysates

Lane 2 : Human fetal brain lysates

Lysates/proteins at 10 µg per lane.

Secondary

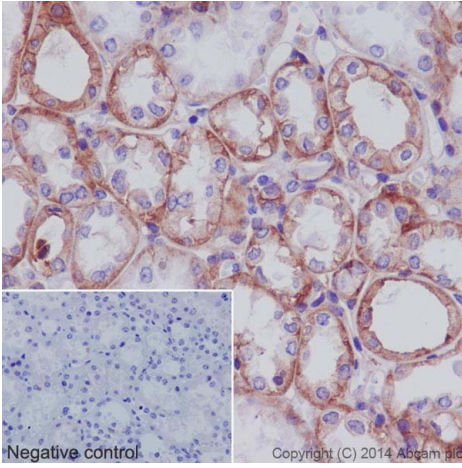
All lanes : Anti-Rabbit IgG (HRP), specific to the non-reduced form
of IgG at 1/1000 dilution

Predicted band size: 116 kDa

Observed band size: 125 kDa

Blocking/dilution buffer: 5% NFDM/TBST.

ab179475 can recognize 135kDa full length Integrin alpha V and
125kDa heavy chain. The 125 kDa band is Integrin alpha V heavy
chain.



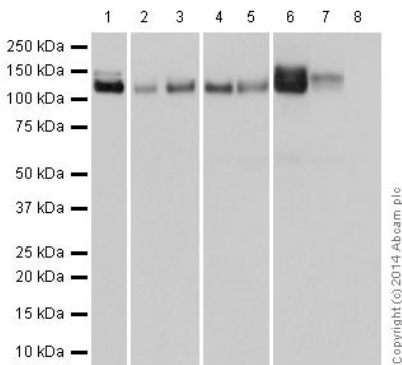
Immunohistochemistry (Formalin/PFA-fixed paraffin-embedded sections) - Anti-Integrin alpha V antibody [EPR16800] (ab179475)

Immunohistochemical analysis of paraffin-embedded human kidney tissue labeling Integrin alpha V with ab179475 at 1/500 dilution followed by Goat Anti-Rabbit HRP (IgG H&L) ([ab97051](#)) secondary antibody at 1/500 dilution.

Membrane and cytoplasm staining on human kidney tubules is observed. Counterstained with hematoxylin.

Negative control: Using PBS instead of primary antibody, secondary antibody is Goat Anti-Rabbit IgG H&L (HRP) ([ab97051](#)) at 1/500 dilution.

Perform heat mediated antigen retrieval with Tris/EDTA buffer pH 9.0 before commencing with IHC staining protocol.



Western blot - Anti-Integrin alpha V antibody [EPR16800] (ab179475)

All lanes : Anti-Integrin alpha V antibody [EPR16800] (ab179475) at 1/5000 dilution

Lane 1 : Mouse brain lysates

Lane 2 : Mouse kidney lysates

Lane 3 : Mouse spleen lysates

Lane 4 : Rat brain lysates

Lane 5 : Rat kidney lysates

Lane 6 : C6 (Rat glial tumor cells) whole cell lysates

Lane 7 : NIH/3T3 (Mouse embryo fibroblast cells) whole cell lysates

Lane 8 : Raji (Human Burkitt's lymphoma cell line) whole cell lysates

Lysates/proteins at 10 µg per lane.

Secondary

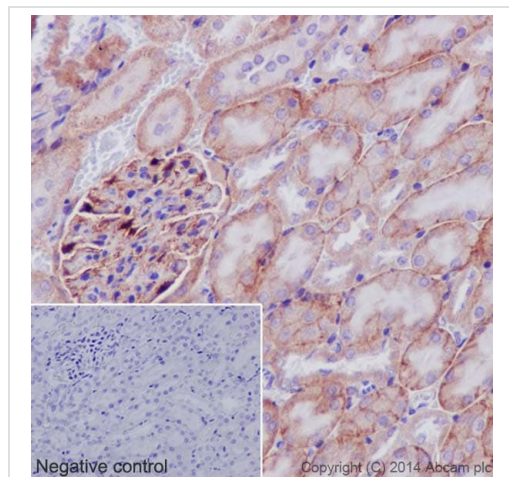
All lanes : Goat Anti-Rabbit IgG, (H+L), Peroxidase conjugated at 1/1000 dilution

Predicted band size: 116 kDa

Observed band size: 125, 135 kDa

Blocking/dilution buffer: 5% NFDM/TBST.

ab179475 can recognize 135kDa full length Integrin alpha V and 125kDa heavy chain. The 125 kDa band is Integrin alpha V heavy chain.



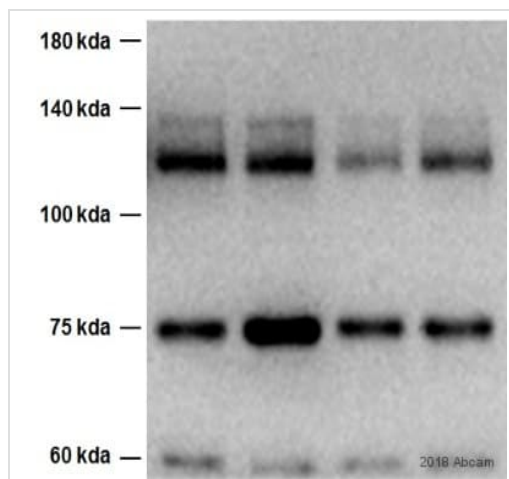
Immunohistochemistry (Formalin/PFA-fixed paraffin-embedded sections) - Anti-Integrin alpha V antibody [EPR16800] (ab179475)

Immunohistochemical analysis of paraffin-embedded mouse kidney tissue labeling Integrin alpha V with ab179475 at 1/500 dilution followed by Goat Anti-Rabbit HRP (IgG H&L) ([ab97051](#)) secondary at 1/500 dilution.

Membrane and cytoplasm staining on mouse kidney tubule and glomerulus is observed. Counterstained with hematoxylin.

Negative control: Using PBS instead of primary antibody, secondary antibody is Goat Anti-Rabbit IgG H&L (HRP) ([ab97051](#)) at 1/500 dilution.

Perform heat mediated antigen retrieval with Tris/EDTA buffer pH 9.0 before commencing with IHC staining protocol.



Western blot - Anti-Integrin alpha V antibody [EPR16800] (ab179475)

This image is courtesy of an anonymous Abreview.

All lanes : Anti-Integrin alpha V antibody [EPR16800] (ab179475) at 1/2000 dilution (8 hours at 4°C)

All lanes : Mouse skin whole cell lysate

Lysates/proteins at 40 µg per lane.

Secondary

All lanes : Goat anti-Rabbit IgG(H+L)-HRP at 1/5000 dilution

Developed using the ECL technique.

Predicted band size: 116 kDa

Exposure time: 25 seconds

Diluent: 2% BSA in 1X TBST.

Blocked using 5% BSA for 1 hour at RT.

Why choose a recombinant antibody?



Research with confidence
Consistent and reproducible results



Long-term and scalable supply
Recombinant technology



Success from the first experiment
Confirmed specificity



Ethical standards compliant
Animal-free production

Anti-Integrin alpha V antibody [EPR16800]
(ab179475)

Please note: All products are "FOR RESEARCH USE ONLY. NOT FOR USE IN DIAGNOSTIC PROCEDURES"

Our Abpromise to you: Quality guaranteed and expert technical support

- Replacement or refund for products not performing as stated on the datasheet
- Valid for 12 months from date of delivery
- Response to your inquiry within 24 hours
- We provide support in Chinese, English, French, German, Japanese and Spanish
- Extensive multi-media technical resources to help you
- We investigate all quality concerns to ensure our products perform to the highest standards

If the product does not perform as described on this datasheet, we will offer a refund or replacement. For full details of the Abpromise, please visit <https://www.abcam.co.jp/abpromise> or contact our technical team.

Terms and conditions

- Guarantee only valid for products bought direct from Abcam or one of our authorized distributors