


Anti-Integrin alpha 6 antibody ab97760

★★★★★ 2 Abreviews 9 References 画像数 1

医薬用外劇物

製品の概要

製品名	Anti-Integrin alpha 6 antibody
製品の詳細	Rabbit polyclonal to Integrin alpha 6
由来種	Rabbit
アプリケーション	適用あり: WB
種交差性	交差種: Human 交差が予測される動物種: Mouse, Cow 
免疫原	Recombinant fragment, corresponding to amino acids 526-803 of Human Integrin alpha 6 isoform Alpha-6XIA (NP_000201).
ポジティブ・コントロール	293T, A431, HeLaS3, HepG2 and Raji cell lysate. H1299 whole cell lysate.
特記事項	<p>The Life Science industry has been in the grips of a reproducibility crisis for a number of years. Abcam is leading the way in addressing this with our range of recombinant monoclonal antibodies and knockout edited cell lines for gold-standard validation. Please check that this product meets your needs before purchasing.</p> <p>If you have any questions, special requirements or concerns, please send us an inquiry and/or contact our Support team ahead of purchase. Recommended alternatives for this product can be found below, along with publications, customer reviews and Q&As</p>

製品の特性

製品の状態	Liquid
保存方法	Shipped at 4°C. Upon delivery aliquot. Store at -20°C or -80°C. Avoid freeze / thaw cycle.
バッファー	pH: 7.00 Preservative: 0.01% Thimerosal (merthiolate) Constituents: 1.21% Tris, 0.75% Glycine, 10% Glycerol (glycerin, glycerine)
精製度	Immunogen affinity purified
ポリ/モノ	ポリクローナル
アイソタイプ	IgG

アプリケーション

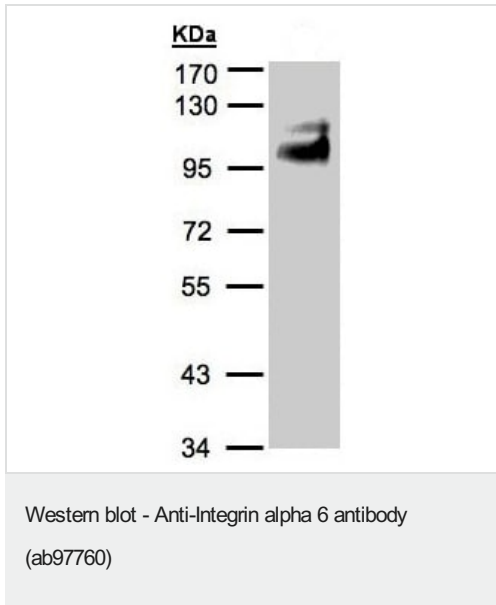
The Abpromise guarantee **Abpromise保証は、次のテスト済みアプリケーションにおけるab97760の使用に適用されます**
アプリケーションノートには、推奨の開始希釈率がありますが、適切な希釈率につきましてはご確認ください。

アプリケーション	Abreviews	特記事項
WB	★★★★★ (2)	1/500 - 1/3000. Predicted molecular weight: 120 kDa.

ターゲット情報

機能	Integrin alpha-6/beta-1 is a receptor for laminin on platelets. Integrin alpha-6/beta-4 is a receptor for laminin in epithelial cells and it plays a critical structural role in the hemidesmosome (By similarity). ITGA6:ITGB4 binds to NRG1 (via EGF domain) and this binding is essential for NRG1-ERBB signaling (PubMed:20682778). ITGA6:ITGB4 binds to IGF1 and this binding is essential for IGF1 signaling (PubMed:22351760).
組織特異性	Integrin alpha-6/beta-4 is predominantly expressed by epithelia. Isoforms containing segment X1 are ubiquitously expressed. Isoforms containing segment X1X2 are expressed in heart, kidney, placenta, colon, duodenum, myoblasts and myotubes, and in a limited number of cell lines; they are always coexpressed with the ubiquitous isoform containing segment X1. In some tissues (e.g. Salivary gland), isoforms containing cytoplasmic segment A and isoforms containing segment B are detected while in others, only isoforms containing one cytoplasmic segment are found (segment A in epidermis and segment B in kidney).
関連疾患	Epidermolysis bullosa letalis, with pyloric atresia
配列類似性	Belongs to the integrin alpha chain family. Contains 7 FG-GAP repeats.
翻訳後修飾	Isoforms containing segment A, but not segment B, are the major targets for PMA-induced phosphorylation. Phosphorylation occurs on 'Ser-1103' of isoform alpha-6X1X2A. Phosphorylation is not required for the induction of integrin alpha-6A/beta-1 high affinity but may reduce the affinity for ligand. In invasive prostate cancer ITGA6 undergoes PLAU-mediated cleavage at residues Arg-634-635-Arg in a time-dependent manner enhancing cell invasion and migration in vitro. Palmitoylation by DHHC3 enhances stability and cell surface expression.
細胞内局在	Cell membrane. Cell membrane.

画像



Anti-Integrin alpha 6 antibody (ab97760) at 1/2000 dilution + H1299 whole cell lysate at 30 µg

Predicted band size: 120 kDa

7.5% SDS-PAGE.

Please note: All products are "FOR RESEARCH USE ONLY. NOT FOR USE IN DIAGNOSTIC PROCEDURES"

Our Abpromise to you: Quality guaranteed and expert technical support

- Replacement or refund for products not performing as stated on the datasheet
- Valid for 12 months from date of delivery
- Response to your inquiry within 24 hours
- We provide support in Chinese, English, French, German, Japanese and Spanish
- Extensive multi-media technical resources to help you
- We investigate all quality concerns to ensure our products perform to the highest standards

If the product does not perform as described on this datasheet, we will offer a refund or replacement. For full details of the Abpromise, please visit <https://www.abcam.co.jp/abpromise> or contact our technical team.

Terms and conditions

- Guarantee only valid for products bought direct from Abcam or one of our authorized distributors