

Anti-Integrin alpha 3a antibody [29A3] ab8985

1 References [画像数 1](#)

製品の概要

製品名	Anti-Integrin alpha 3a antibody [29A3]
製品の詳細	Mouse monoclonal [29A3] to Integrin alpha 3a
由来種	Mouse
特異性	29A3 recognizes specifically the cytoplasmic domain of integrin subunit α 3A which is present in the basal cell layer in skin, glomeruli, Bowman's capsules and distal tubuli in kidney, all vascular and capillary endothelia in brain, heart and skin, and vascular smooth muscle cells in heart.
アプリケーション	適用あり: IHC-Fr
種交差性	交差種: Human
免疫原	Synthetic peptide corresponding to Integrin alpha 3a conjugated to keyhole limpet haemocyanin. Database link: P26006
エピトープ	Cytoplasmic domain of α 3A Integrin. Phospho-epitope.
特記事項	<p>Background</p> <p>Integrins are a family of heterodimeric membrane glycoproteins consisting of non-covalently associated α and β subunits. More than 18 α and 8 β subunits with numerous splice variant isoforms have been identified in mammals. In general, integrins function as receptors for extracellular matrix proteins. Certain integrins can also bind to soluble ligands or to counter-receptors on adjacent cells, such as the intracellular adhesion molecules (ICAMs), resulting in aggregation of cells. Signals transduced by integrins play a role in many biological processes, including cell growth, differentiation, migration and apoptosis. For integrin subunits α3 and α6, two cytoplasmic variants, A and B, have been identified.</p> <p>Source</p> <p>29A3 is a Mouse monoclonal IgG1, κ antibody derived by fusion of SP2/0 Mouse myeloma cells with spleen cells from a BALB/c Mouse immunized with a synthetic peptide corresponding to the cytoplasmic domain of the integrin subunit α3A including an additional N-terminal cysteine (CTRRLYEAKRQKAEMKSPSETERLTDDY) coupled to keyhole limpet hemocyanin.</p> <p>Formulation: Each vial contains 100 μl 1 mg/ml purified monoclonal antibody in PBS containing 0.09% sodium azide.</p> <p>The Life Science industry has been in the grips of a reproducibility crisis for a number of years. Abcam is leading the way in addressing this with our range of recombinant monoclonal antibodies and knockout edited cell lines for gold-standard validation. Please check that this product meets your needs before purchasing.</p> <p>If you have any questions, special requirements or concerns, please send us an inquiry and/or</p>

 [Run BLAST with](#)

 [Run BLAST with](#)

contact our Support team ahead of purchase. Recommended alternatives for this product can be found below, along with publications, customer reviews and Q&As

製品の特性

製品の状態	Liquid
保存方法	Shipped at 4°C. Store at +4°C short term (1-2 weeks). Upon delivery aliquot. Store at -20°C or -80°C. Avoid freeze / thaw cycle.
バッファー	Preservative: 0.09% Sodium azide Constituent: PBS
精製度	Protein G purified
一次抗体 備考	The integrins, finally, form a large family of glycosylated transmembrane proteins that act as dimers of an alpha and a beta subunit in interconnecting the cytoskeleton and the extracellular matrix.
ポリクローナル	モノクローナル
クローン名	29A3
ミエローマ	Sp2/0
アイソタイプ	IgG1
軽鎖の種類	kappa

アプリケーション

The Abpromise guarantee **Abpromise保証は、次のテスト済みアプリケーションにおけるab8985の使用に適用されます**

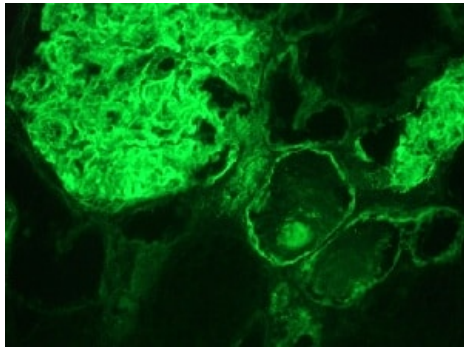
アプリケーションノートには、推奨の開始希釈率がありますが、適切な希釈率につきましてはご検討ください。

アプリケーション	Abreviews	特記事項
IHC-Fr		Use at an assay dependent concentration. Recommended range is 1:100 - 1:200 for immunohistochemistry with avidin-biotinylated horseradish peroxidase complex (ABC) as detection reagent.

ターゲット情報

関連性	Integrins are heterodimeric integral membrane proteins composed of an alpha chain and a beta chain. Alpha chain 3 undergoes post-translational cleavage in the extracellular domain to yield disulfide-linked light and heavy chains that join with beta 1 to form an integrin that interacts with many extracellular-matrix proteins.
細胞内局在	Cell Membrane

画像



Immunohistochemistry on frozen section of human kidney

Immunohistochemistry (Frozen sections) - Anti-
Integrin alpha 3a antibody [29A3] (ab8985)

Please note: All products are "FOR RESEARCH USE ONLY. NOT FOR USE IN DIAGNOSTIC PROCEDURES"

Our Abpromise to you: Quality guaranteed and expert technical support

- Replacement or refund for products not performing as stated on the datasheet
- Valid for 12 months from date of delivery
- Response to your inquiry within 24 hours
- We provide support in Chinese, English, French, German, Japanese and Spanish
- Extensive multi-media technical resources to help you
- We investigate all quality concerns to ensure our products perform to the highest standards

If the product does not perform as described on this datasheet, we will offer a refund or replacement. For full details of the Abpromise, please visit <https://www.abcam.co.jp/abpromise> or contact our technical team.

Terms and conditions

- Guarantee only valid for products bought direct from Abcam or one of our authorized distributors