

Anti-Integrin alpha 3 antibody [J143] ab11767

[4 References](#) [画像数 1](#)

製品の概要

製品名	Anti-Integrin alpha 3 antibody [J143]
製品の詳細	Mouse monoclonal [J143] to Integrin alpha 3
由来種	Mouse
特異性	This antibody recognizes the alpha 3 subunit of VLA3 (ECMRI - extracellular matrix receptor I, URO1), which has been shown to be related to the chicken fibronectin/laminin receptor. VLA proteins are part of the integrin family of cell adhesion molecules, and the distribution of VLA3 in cells and tissues suggests a possible relationship with cellular adhesion. This antibody detects glycoproteins of 140, 120 and 30kDa.
アプリケーション	適用あり: ICC/IF
種交差性	交差種: Human
免疫原	Tissue, cells or virus corresponding to Human Integrin alpha 3. developed using the 253J Bladder cancer cell line Database link: P26006
ポジティブ・コントロール	Kidney.
特記事項	

The URO panel of antibodies was developed to immuno-anatomically dissect the nephron from glomerulus to bladder urothelium - these antibodies detect various cell surface antigens specific to segments of the renal tubule. Several have been shown to occur as tissue related markers of renal cancers. This antibody reacts predominantly with adherent cell types and is absent from cells growing in suspension, e.g. leukemia, lymphoma, lymphoblastoid, or other hematopoietic cell lines. In tissues, the URO1 antigen is expressed by glomeruli, the basal layer of transitional epithelium and skin, and the basement membrane of glands. All bladder tumors express URO1, as do most kidney tumors and other epithelial tumors (e.g. colon, ovary, lung and breast). Astrocytoma, melanoma, sarcoma, and lymphoma specimens are negative for URO1 expression.

The Life Science industry has been in the grips of a reproducibility crisis for a number of years. Abcam is leading the way in addressing this with our range of recombinant monoclonal antibodies and knockout edited cell lines for gold-standard validation. Please check that this product meets your needs before purchasing.

If you have any questions, special requirements or concerns, please send us an inquiry and/or contact our Support team ahead of purchase. Recommended alternatives for this product can be found below, along with publications, customer reviews and Q&As

製品の特性

製品の状態	Liquid
保存方法	Shipped at 4°C. Store at +4°C short term (1-2 weeks). Upon delivery aliquot. Store at -20°C or -80°C. Avoid freeze / thaw cycle.
バッファー	Preservative: 0.1% Sodium azide Constituents: PBS, 1% BSA
精製度	Tissue culture supernatant
一次抗体 備考	The URO panel of antibodies was developed to immuno-anatomically dissect the nephron from glomerulus to bladder urothelium - these antibodies detect various cell surface antigens specific to segments of the renal tubule. Several have been shown to occur as tissue related markers of renal cancers. This antibody reacts predominantly with adherent cell types and is absent from cells growing in suspension, e.g. leukemia, lymphoma, lymphoblastoid, or other hematopoietic cell lines. In tissues, the URO1 antigen is expressed by glomeruli, the basal layer of transitional epithelium and skin, and the basement membrane of glands. All bladder tumors express URO1, as do most kidney tumors and other epithelial tumors (e.g. colon, ovary, lung and breast). Astrocytoma, melanoma, sarcoma, and lymphoma specimens are negative for URO1 expression.
ポリモノ	モノクローナル
クローン名	J143
アイソタイプ	IgG1

アプリケーション

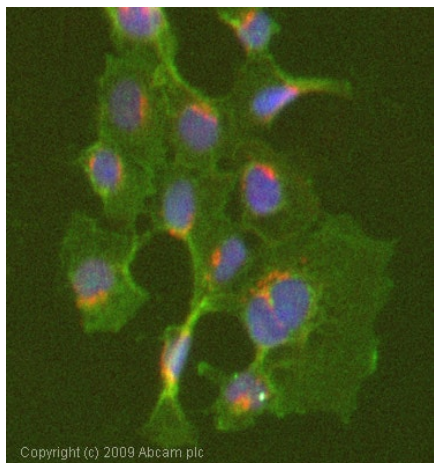
The Abpromise guarantee **Abpromise保証は、次のテスト済みアプリケーションにおけるab11767の使用に適用されます**
アプリケーションノートには、推奨の開始希釈率がありますが、適切な希釈率につきましてはご検討ください。

アプリケーション	Abreviews	特記事項
ICC/IF		1/40.

ターゲット情報

機能	Integrin alpha-3/beta-1 is a receptor for fibronectin, laminin, collagen, epiligrin, thrombospondin and CSPG4. Alpha-3/beta-1 may mediate with LGALS3 the stimulation by CSPG4 of endothelial cells migration.
組織特異性	Isoform alpha-3A is widely expressed. Isoform alpha-3B is expressed in brain and heart. In brain, both isoforms are exclusively expressed on vascular smooth muscle cells, whereas in heart isoform alpha-3A is strongly expressed on vascular smooth muscle cells, isoform alpha-3B is detected only on endothelial vein cells.
配列類似性	Belongs to the integrin alpha chain family. Contains 7 FG-GAP repeats.
翻訳後修飾	Isoform alpha-3A, but not isoform alpha-3B, is phosphorylated on serine residues. Phosphorylation increases after phorbol 12-myristate 13-acetate stimulation. Isoform alpha-3A is phosphorylated on Tyr-1051.
細胞内局在	Membrane.

画像



Immunocytochemistry/ Immunofluorescence - Anti-Integrin alpha 3 antibody [J143] (ab11767)

ICC/IF image of ab11767 stained Hek293 cells. The cells were 4% PFA fixed (10 min) and then incubated in 1%BSA / 10% normal goat serum / 0.3M glycine in 0.1% PBS-Tween for 1h to permeabilise the cells and block non-specific protein-protein interactions. The cells were then incubated with the antibody (ab11767, 1/1000 dilution) overnight at +4°C. The secondary antibody (green) was Alexa Fluor® 488 goat anti-mouse IgG (H+L) used at a 1/1000 dilution for 1h. Alexa Fluor® 594 WGA was used to label plasma membranes (red) at a 1/200 dilution for 1h. DAPI was used to stain the cell nuclei (blue) at a concentration of 1.43µM.

Please note: All products are "FOR RESEARCH USE ONLY. NOT FOR USE IN DIAGNOSTIC PROCEDURES"

Our Abpromise to you: Quality guaranteed and expert technical support

- Replacement or refund for products not performing as stated on the datasheet
- Valid for 12 months from date of delivery
- Response to your inquiry within 24 hours
- We provide support in Chinese, English, French, German, Japanese and Spanish
- Extensive multi-media technical resources to help you
- We investigate all quality concerns to ensure our products perform to the highest standards

If the product does not perform as described on this datasheet, we will offer a refund or replacement. For full details of the Abpromise, please visit <https://www.abcam.co.jp/abpromise> or contact our technical team.

Terms and conditions

- Guarantee only valid for products bought direct from Abcam or one of our authorized distributors