

### Anti-Integrin alpha 3 antibody [F35 177-1] ab20140

★★★★★ [1 Abreviews](#) [1 References](#) [画像数 1](#)

#### 製品の概要

製品名	Anti-Integrin alpha 3 antibody [F35 177-1]
製品の詳細	Mouse monoclonal [F35 177-1] to Integrin alpha 3
由来種	Mouse
アプリケーション	<b>適用あり:</b> IHC-Fr, IHC-FoFr
種交差性	<b>交差種:</b> Human
免疫原	Tissue, cells or virus corresponding to Human Integrin alpha 3. MTSV1-7 HYE - human breast epithelial cells
特記事項	<p>Fusion Partner: NS2</p> <p>The Life Science industry has been in the grips of a reproducibility crisis for a number of years. Abcam is leading the way in addressing this with our range of recombinant monoclonal antibodies and knockout edited cell lines for gold-standard validation. Please check that this product meets your needs before purchasing.</p> <p>If you have any questions, special requirements or concerns, please send us an inquiry and/or contact our Support team ahead of purchase. Recommended alternatives for this product can be found below, along with publications, customer reviews and Q&amp;As</p>

#### 製品の特性

製品の状態	Liquid
保存方法	Shipped at 4°C. Store at +4°C short term (1-2 weeks). Upon delivery aliquot. Store at -20°C or -80°C. Avoid freeze / thaw cycle.
バッファー	Preservative: 0.02% Sodium azide Constituent: 99.98% PBS
精製度	Protein A/G purified
ポリ/モノ	モノクローナル
クローン名	F35 177-1
アイソタイプ	IgG1
軽鎖の種類	unknown

#### アプリケーション

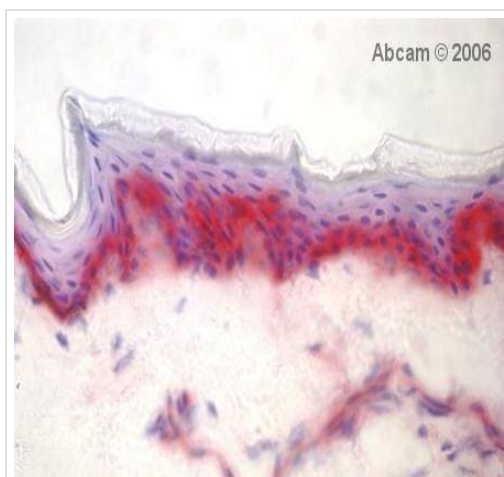
**The Abpromise guarantee**      **Abpromise保証は、次のテスト済みアプリケーションにおけるab20140の使用に適用されます**  
 アプリケーションノートには、推奨の開始希釈率がありますが、適切な希釈率につきましてはご検討ください。

アプリケーション	Abreviews	特記事項
IHC-Fr	★★★★★ (1)	Use at an assay dependent concentration. Fix with acetone.
IHC-FoFr		Use at an assay dependent concentration.

## ターゲット情報

<b>機能</b>	Integrin alpha-3/beta-1 is a receptor for fibronectin, laminin, collagen, epiligrin, thrombospondin and CSPG4. Alpha-3/beta-1 may mediate with LGALS3 the stimulation by CSPG4 of endothelial cells migration.
<b>組織特異性</b>	Isoform alpha-3A is widely expressed. Isoform alpha-3B is expressed in brain and heart. In brain, both isoforms are exclusively expressed on vascular smooth muscle cells, whereas in heart isoform alpha-3A is strongly expressed on vascular smooth muscle cells, isoform alpha-3B is detected only on endothelial vein cells.
<b>配列類似性</b>	Belongs to the integrin alpha chain family. Contains 7 FG-GAP repeats.
<b>翻訳後修飾</b>	Isoform alpha-3A, but not isoform alpha-3B, is phosphorylated on serine residues. Phosphorylation increases after phorbol 12-myristate 13-acetate stimulation. Isoform alpha-3A is phosphorylated on Tyr-1051.
<b>細胞内局在</b>	Membrane.

## 画像



Immunohistochemistry (Frozen sections) analysis of human skin tissue sections labeling Integrin alpha 3 with ab20140 at 1/1000 dilution. An undiluted goat anti-mouse polyclonal alkaline phosphatase conjugate was used as the secondary antibody.

Immunohistochemistry (Frozen sections) - Anti-Integrin alpha 3 antibody [F35 177-1] (ab20140)

**Please note:** All products are "FOR RESEARCH USE ONLY. NOT FOR USE IN DIAGNOSTIC PROCEDURES"

## **Our Abpromise to you: Quality guaranteed and expert technical support**

---

- Replacement or refund for products not performing as stated on the datasheet
- Valid for 12 months from date of delivery
- Response to your inquiry within 24 hours
  
- We provide support in Chinese, English, French, German, Japanese and Spanish
- Extensive multi-media technical resources to help you
- We investigate all quality concerns to ensure our products perform to the highest standards

If the product does not perform as described on this datasheet, we will offer a refund or replacement. For full details of the Abpromise, please visit <https://www.abcam.co.jp/abpromise> or contact our technical team.

## **Terms and conditions**

---

- Guarantee only valid for products bought direct from Abcam or one of our authorized distributors