

Anti-Integrin alpha 2+beta 1 antibody [16B4] ab30483

★★★★☆ **4 Abreviews** **13 References** **画像数 3**

製品の概要

製品名	Anti-Integrin alpha 2+beta 1 antibody [16B4]
製品の詳細	Mouse monoclonal [16B4] to Integrin alpha 2+beta 1
由来種	Mouse
アプリケーション	適用あり: ICC/IF, Flow Cyt
種交差性	交差種: Human
免疫原	Full length native protein (purified). This information is proprietary to Abcam and/or its suppliers.
ポジティブ・コントロール	ICC-IF: A431 cells
特記事項	<p>This antibody clone is manufactured by Abcam. If you require a custom buffer formulation or conjugation for your experiments, please contact orders@abcam.com.</p> <p>The Life Science industry has been in the grips of a reproducibility crisis for a number of years. Abcam is leading the way in addressing this with our range of recombinant monoclonal antibodies and knockout edited cell lines for gold-standard validation. Please check that this product meets your needs before purchasing.</p> <p>If you have any questions, special requirements or concerns, please send us an inquiry and/or contact our Support team ahead of purchase. Recommended alternatives for this product can be found below, along with publications, customer reviews and Q&As</p>

製品の特性

製品の状態	Liquid
保存方法	Shipped at 4°C. Store at +4°C short term (1-2 weeks). Upon delivery aliquot. Store at -20°C long term.
バッファー	pH: 7.40 Preservative: 0.02% Sodium azide Constituents: PBS, 6.97% L-Arginine
精製度	Protein G purified
特記事項(精製)	ab30483 was purified from tissue culture supernatant
一次抗体 備考	ab30483 is identified as capable of immunoprecipitating a non-reducible alpha subunit from I ¹²⁵ surface labelled Human cell line extract. It is confirmed as specific to the alpha 2 subunit by relative expression of antigen on various cell lines by FACS, and its recognition of affinity purified

alpha 2 beta 1 in dot blots.

ポリ/モノ	モノクローナル
クローン名	16B4
ミエローマ	x63-Ag8.653
アイソタイプ	IgG1

アプリケーション

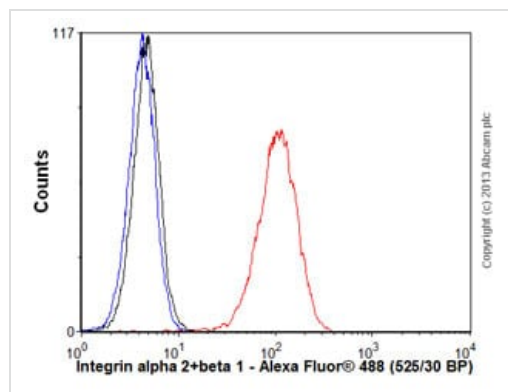
The Abpromise guarantee **Abpromise保証は、次のテスト済みアプリケーションにおけるab30483の使用に適用されます**
アプリケーションノートには、推奨の開始希釈率がありますが、適切な希釈率につきましてはご検討ください。

アプリケーション	Abreviews	特記事項
ICC/IF	★★★★★ (2)	Use a concentration of 5 - 10 µg/ml.
Flow Cyt		Use 0.1µg for 10 ⁶ cells. ab170190 - Mouse monoclonal IgG1, is suitable for use as an isotype control with this antibody.

ターゲット情報

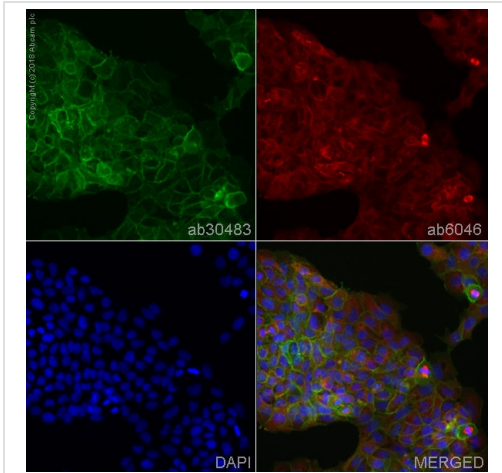
細胞内局在 Cell Membrane; single-pass type I membrane protein

画像



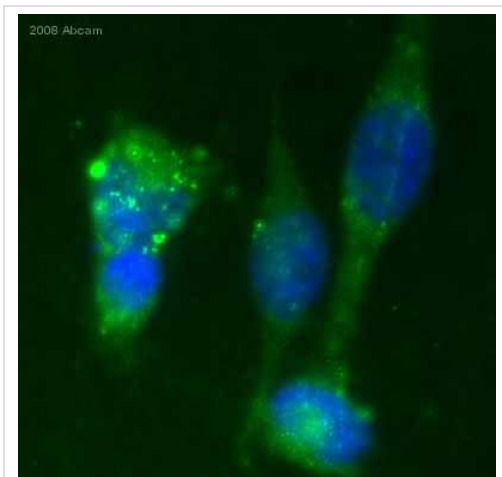
Flow Cytometry - Anti-Integrin alpha 2+beta 1 antibody [16B4] (ab30483)

Overlay histogram showing HT1080 cells stained with ab30483 (red line). The cells were fixed with 4% paraformaldehyde (10 min) and then permeabilized with 0.1% PBS-Tween for 20 min. The cells were then incubated in 1x PBS / 10% normal goat serum / 0.3M glycine to block non-specific protein-protein interactions followed by the antibody (ab30483, 0.1µg/1x10⁶ cells) for 30 min at 22°C. The secondary antibody used was a goat **anti-mouse Alexa Fluor® 488** (IgG; H+L) (**ab150113**) at 1/2000 dilution for 30 min at 22°C. Isotype control antibody (black line) was mouse IgG1 [**ab91353**, 1µg/1x10⁶ cells] used under the same conditions. Unlabelled sample (blue line) was also used as a control. Acquisition of >5,000 events were collected using a 20mW Argon ion laser (488nm) and 525/30 bandpass filter. This antibody gave a positive signal in HT1080 cells fixed with 80% methanol (5 min)/permeabilized with 0.1% PBS-Tween for 20 min used under the same conditions.



Immunocytochemistry/ Immunofluorescence - Anti-Integrin alpha 2+beta 1 antibody [16B4] (ab30483)

ab30483 stained in A431 cells. The cells were fixed with 4% paraformaldehyde (10min) at room temperature and incubated with PBS containing 10% goat serum, 0.3 M glycine, 1% BSA and 0.1% tween for 1 hour at room temperature to permeabilise the cells and block non-specific protein-protein interactions. The cells were then incubated with ab30483 at 5 µg/ml and **ab6046** (Rabbit polyclonal to beta tubulin) at 1 ug/ml overnight at +4°C. The secondary antibodies were **ab150117** (colored green) used at 1 ug/ml and **ab150087** (pseudo-colored red) used at 2 µg/ml for 1 hour at room temperature. DAPI was used to stain the cell nuclei (colored blue) at a concentration of 1.43 µM for 1 hour at room temperature.



Immunocytochemistry/ Immunofluorescence - Anti-Integrin alpha 2+beta 1 antibody [16B4] (ab30483)

This image is courtesy of an Abreview submitted by Dr Sharon Sneddon

ab30483 staining human breast cancer cells by ICC/IF. Cells were PFA fixed and blocked with 1% serum for 16 hours at 20°C prior to incubating with ab30483 (at 30µg/ml) for 16 hours at 4°C. An Alexa Fluor® 488 conjugated goat anti-mouse antibody, diluted 1/200, was used as the secondary.

Please note: All products are "FOR RESEARCH USE ONLY. NOT FOR USE IN DIAGNOSTIC PROCEDURES"

Our Abpromise to you: Quality guaranteed and expert technical support

- Replacement or refund for products not performing as stated on the datasheet
- Valid for 12 months from date of delivery
- Response to your inquiry within 24 hours
- We provide support in Chinese, English, French, German, Japanese and Spanish
- Extensive multi-media technical resources to help you
- We investigate all quality concerns to ensure our products perform to the highest standards

If the product does not perform as described on this datasheet, we will offer a refund or replacement. For full details of the Abpromise,

please visit <https://www.abcam.co.jp/abpromise> or contact our technical team.

Terms and conditions

- Guarantee only valid for products bought direct from Abcam or one of our authorized distributors