

### Anti-Insulin antibody [E2E3] ab9569

★★★★☆ [2 Abreviews](#) [4 References](#) [画像数 2](#)

#### 製品の概要

---

|          |   |
|----------|---|
| 製品名      | Anti-Insulin antibody [E2E3]  |
| 製品の詳細    | Mouse monoclonal [E2E3] to Insulin  |
| 由来種      | Mouse   |
| 特異性      | The antibody recognizes the biologically most active forms of insulin on the C terminal end. The antibody labels the cytoplasm of beta cells in pancreatic islands and insulinomas (tested on formalin-fixed, paraffin-embedded tissue sections using the Streptavidin-biotinylated peroxidase method).   |
| アプリケーション | <b>適用あり:</b> IHC-P  |
| 種交差性     | <b>交差種:</b> Human   |
| 免疫原      | Full length protein corresponding to Pig Insulin. Full length Native protein<br>Database link: <a href="#">P01315</a>   |
| 特記事項     | <p>The Life Science industry has been in the grips of a reproducibility crisis for a number of years. Abcam is leading the way in addressing this with our range of recombinant monoclonal antibodies and knockout edited cell lines for gold-standard validation. Please check that this product meets your needs before purchasing.</p> <p>If you have any questions, special requirements or concerns, please send us an inquiry and/or contact our Support team ahead of purchase. Recommended alternatives for this product can be found below, along with publications, customer reviews and Q&amp;As</p> |

#### 製品の特性

---

|        |   |
|--------|---|
| 製品の状態  | Liquid  |
| 保存方法   | Shipped at 4°C. Store at +4°C short term (1-2 weeks). Store at -20°C or -80°C. Avoid freeze / thaw cycle. |
| バッファー  | Preservative: 0.097% Sodium azide<br>Constituent: 0.2% BSA  |
| 精製度    | Protein A purified  |
| ポリ/モノ  | モノクローナル   |
| クローン名  | E2E3  |
| アイソタイプ | IgG1  |

## アプリケーション

**The Abpromise guarantee** **Abpromise保証は、次のテスト済みアプリケーションにおけるab9569の使用に適用されます**  
 アプリケーションノートには、推奨の開始希釈率がありますが、適切な希釈率につきましてはご確認ください。

| アプリケーション | Abreviews | 特記事項   |
|----------|-----------|--|
| IHC-P    | ★★★★★ (1) | 1/100.<br>Staining of formalin-fixed tissue sections requires treating in boiling 10mM citrate buffer, pH 6.0 for 10-20 minutes. Primary may be incubated for 60 mins at RT. |

## ターゲット情報

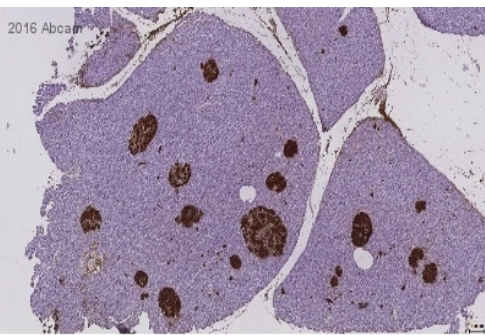
|              |  |
|--------------|--|
| <b>機能</b>    | Insulin decreases blood glucose concentration. It increases cell permeability to monosaccharides, amino acids and fatty acids. It accelerates glycolysis, the pentose phosphate cycle, and glycogen synthesis in liver.  |
| <b>関連疾患</b>  | <p>Defects in INS are the cause of familial hyperproinsulinemia (FHPRI) [MIM:176730].</p> <p>Defects in INS are a cause of diabetes mellitus insulin-dependent type 2 (IDDM2) [MIM:125852]. IDDM2 is a multifactorial disorder of glucose homeostasis that is characterized by susceptibility to ketoacidosis in the absence of insulin therapy. Clinical features are polydipsia, polyphagia and polyuria which result from hyperglycemia-induced osmotic diuresis and secondary thirst. These derangements result in long-term complications that affect the eyes, kidneys, nerves, and blood vessels.</p> <p>Defects in INS are a cause of diabetes mellitus permanent neonatal (PNDM) [MIM:606176]. PNDM is a rare form of diabetes distinct from childhood-onset autoimmune diabetes mellitus type 1. It is characterized by insulin-requiring hyperglycemia that is diagnosed within the first months of life. Permanent neonatal diabetes requires lifelong therapy.</p> <p>Defects in INS are a cause of maturity-onset diabetes of the young type 10 (MODY10) [MIM:613370]. MODY10 is a form of diabetes that is characterized by an autosomal dominant mode of inheritance, onset in childhood or early adulthood (usually before 25 years of age), a primary defect in insulin secretion and frequent insulin-independence at the beginning of the disease.</p> |
| <b>配列類似性</b> | Belongs to the insulin family.   |
| <b>細胞内局在</b> | Secreted.  |

## 画像



Immunohistochemistry (Formalin/PFA-fixed paraffin-embedded sections) - Anti-Insulin antibody [E2E3] (ab9569)

Human pancreas stained with ab9569. The antibody labels the cytoplasm of  $\beta$  cells in pancreatic islets and insulinomas (tested on formalin-fixed, paraffin embedded tissue sections using the Streptavidin-biotinylated peroxidase method).



Immunohistochemistry (Formalin/PFA-fixed paraffin-embedded sections) - Anti-Insulin antibody [E2E3] (ab9569)

Image courtesy of an abreview from Nizar Mourad.

Formalin-fixed, paraffin-embedded monkey pancreas tissue stained for Insulin using ab9569 at 1/800 dilution in immunohistochemical analysis.

Goat Anti-mouse HRP was used as the secondary antibody.

**Please note:** All products are "FOR RESEARCH USE ONLY. NOT FOR USE IN DIAGNOSTIC PROCEDURES"

### Our Abpromise to you: Quality guaranteed and expert technical support

---

- Replacement or refund for products not performing as stated on the datasheet
- Valid for 12 months from date of delivery
- Response to your inquiry within 24 hours
- We provide support in Chinese, English, French, German, Japanese and Spanish
- Extensive multi-media technical resources to help you
- We investigate all quality concerns to ensure our products perform to the highest standards

If the product does not perform as described on this datasheet, we will offer a refund or replacement. For full details of the Abpromise, please visit <https://www.abcam.co.jp/abpromise> or contact our technical team.

### Terms and conditions

---

- Guarantee only valid for products bought direct from Abcam or one of our authorized distributors