

# Anti-INSL4 antibody ab75061

画像数 2

### 製品の概要

---

製品名	Anti-INSL4 antibody
製品の詳細	Rabbit polyclonal to INSL4
由来種	Rabbit
アプリケーション	<b>適用あり:</b> WB, ICC/IF
種交差性	<b>交差種:</b> Human
免疫原	Synthetic peptide derived from internal region of human INSL4.
ポジティブ・コントロール	Extracts from HT-29 cells and A549 cells
特記事項	<p>The Life Science industry has been in the grips of a reproducibility crisis for a number of years. Abcam is leading the way in addressing this with our range of recombinant monoclonal antibodies and knockout edited cell lines for gold-standard validation. Please check that this product meets your needs before purchasing.</p> <p>If you have any questions, special requirements or concerns, please send us an inquiry and/or contact our Support team ahead of purchase. Recommended alternatives for this product can be found below, along with publications, customer reviews and Q&amp;As</p>

### 製品の特性

---

製品の状態	Liquid
保存方法	Shipped at 4°C. Upon delivery aliquot and store at -20°C. Avoid freeze / thaw cycles.
バッファー	pH: 7.40 Preservative: 0.02% Sodium azide Constituents: 50% Glycerol (glycerin, glycerine), 0.87% Sodium chloride, PBS
精製度	Immunogen affinity purified
特記事項(精製)	ab75061 was purified using an epitope-specific immunogen.
ポリモノ	ポリクローナル
アイソタイプ	IgG

### アプリケーション

---

The Abpromise guarantee

**Abpromise保証は、次のテスト済みアプリケーションにおけるab75061の使用に適用されます**

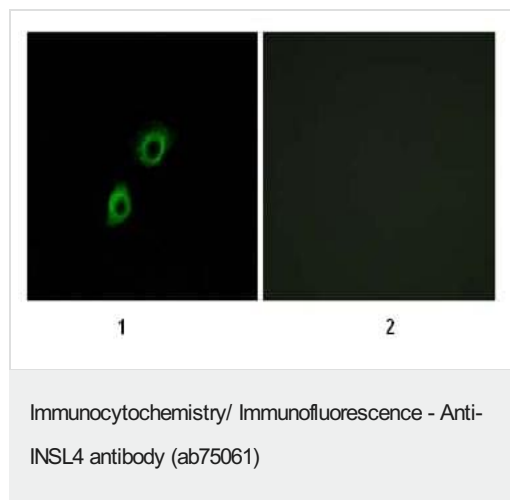
アプリケーションノートには、推奨の開始希釈率がありますが、適切な希釈率につきましてはご確認ください。

アプリケーション	Abreviews	特記事項
WB		1/500 - 1/1000. Predicted molecular weight: 15 kDa.
ICC/IF		1/500 - 1/1000.

## ターゲット情報

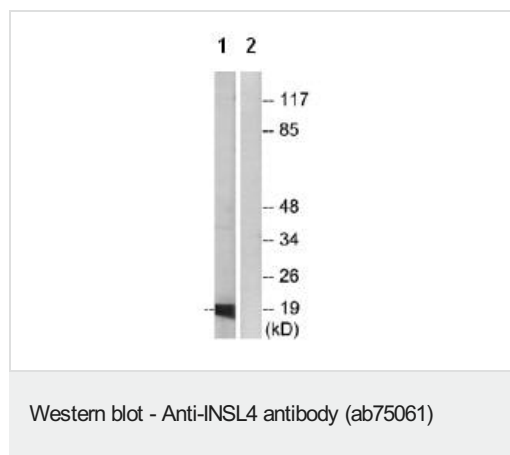
機能	May play an important role in trophoblast development and in the regulation of bone formation.
組織特異性	Expressed in placenta, uterus and in fetal perichondrium. Expression levels were increased in both early placentas and molar pregnancies and were reduced in choriocarcinoma cells.
配列類似性	Belongs to the insulin family.
発生段階	Highly expressed in the early placenta. Expression of epil peptides in the villous cytotrophoblast is different from that displayed by the syncytiotrophoblast. In fetal tissues it was identified in the perichondrium of all four limbs, vertebrae, and ribs. It was abundant in interbone ligaments.
細胞内局在	Secreted.

## 画像



ab75061, at 1/500 dilution, staining of A549 cells using Immunofluorescence analysis.

- 1) Without immunising peptide
- 2) With immunising peptide



**All lanes** : Anti-INSL4 antibody (ab75061) at 1/500 dilution

**Lane 1** : extracts from HT-29 cells

**Lane 2** : extracts from HT-29 cells with immunising peptide at 5 µg

Lysates/proteins at 5 µg per lane.

**Predicted band size:** 15 kDa

**Observed band size:** 19 kDa

**Please note:** All products are "FOR RESEARCH USE ONLY. NOT FOR USE IN DIAGNOSTIC PROCEDURES"

### **Our Abpromise to you: Quality guaranteed and expert technical support**

---

- Replacement or refund for products not performing as stated on the datasheet
- Valid for 12 months from date of delivery
- Response to your inquiry within 24 hours
  
- We provide support in Chinese, English, French, German, Japanese and Spanish
- Extensive multi-media technical resources to help you
- We investigate all quality concerns to ensure our products perform to the highest standards

If the product does not perform as described on this datasheet, we will offer a refund or replacement. For full details of the Abpromise, please visit <https://www.abcam.co.jp/abpromise> or contact our technical team.

### **Terms and conditions**

---

- Guarantee only valid for products bought direct from Abcam or one of our authorized distributors