


### Anti-iNOS antibody ab15323

★★★★★ [20 Abreviews](#) [526 References](#) [画像数 5](#)

#### 製品の概要

製品名	Anti-iNOS antibody
製品の詳細	Rabbit polyclonal to iNOS
由来種	Rabbit
特異性	The immunogen used to raise this antibody shares 84% homology with Rat iNOS. Ab15323 has been batch tested using mouse lysates/tissues only. Some customers have successfully used ab15323 with rat. Please contact Abcam Scientific Support for more information.
アプリケーション	<b>適用あり:</b> IHC-P, WB
種交差性	<b>交差種:</b> Mouse, Recombinant fragment <b>交差が予測される動物種:</b> Rat, Human 
免疫原	Synthetic peptide corresponding to Mouse iNOS.
ポジティブ・コントロール	IHC-P: FFPE mouse and rat lung tissue sections.
特記事項	<b>This product is FOR RESEARCH USE ONLY. For commercial use, please contact <a href="mailto:partnerships@abcam.com">partnerships@abcam.com</a>.</b>  The Life Science industry has been in the grips of a reproducibility crisis for a number of years. Abcam is leading the way in addressing this with our range of recombinant monoclonal antibodies and knockout edited cell lines for gold-standard validation. Please check that this product meets your needs before purchasing.  If you have any questions, special requirements or concerns, please send us an inquiry and/or contact our Support team ahead of purchase. Recommended alternatives for this product can be found below, along with publications, customer reviews and Q&As

#### 製品の特性

製品の状態	Liquid
保存方法	Shipped at 4°C. Store at +4°C short term (1-2 weeks). Upon delivery aliquot. Store at -20°C. Avoid freeze / thaw cycle.
バッファー	pH: 7.4 Preservative: 0.1% Sodium azide Constituents: PBS, 1% BSA
精製度	Immunogen affinity purified

ポリモノ

ポリクローナル

アイソタイプ

IgG

アプリケーション

The Abpromise guarantee

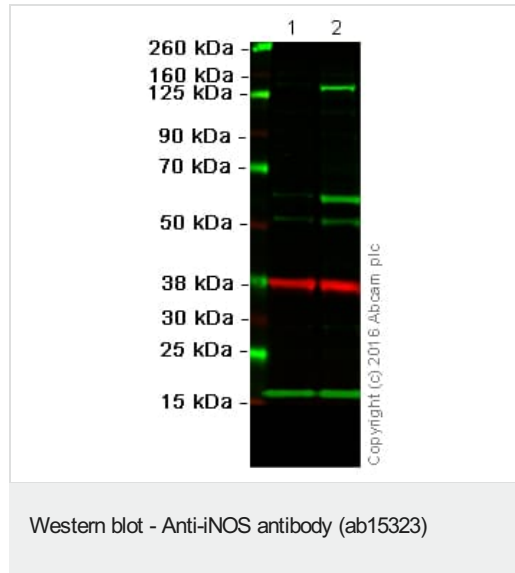
Abpromise保証は、次のテスト済みアプリケーションにおけるab15323の使用に適用されます  
アプリケーションノートには、推奨の開始希釈率がありますが、適切な希釈率につきましてはご確認ください。

アプリケーション	Abreviews	特記事項
IHC-P	★★★★★ (10)	1/100. Perform heat mediated antigen retrieval with citrate buffer pH 6 before commencing with IHC staining protocol.
WB	★★★★★ (3)	Use at an assay dependent concentration. Detects a band of approximately 140 kDa (predicted molecular weight: 131 kDa). Please use at a assay dependent concentration. 1µg/ml was used of a 0.2mg/ml stock (lot GR126616-1). Otherwise 1/250 is recommended for any batches at lower concentration.

ターゲット情報

機能	Produces nitric oxide (NO) which is a messenger molecule with diverse functions throughout the body. In macrophages, NO mediates tumoricidal and bactericidal actions. Also has nitrosylase activity and mediates cysteine S-nitrosylation of cytoplasmic target proteins such COX2.
組織特異性	Expressed in the liver, retina, bone cells and airway epithelial cells of the lung. Not expressed in the platelets.
配列類似性	Belongs to the NOS family. Contains 1 FAD-binding FR-type domain. Contains 1 flavodoxin-like domain.

画像



**All lanes** : Anti-iNOS antibody (ab15323) at 1 µg/ml

**Lane 1** : Raw264.7

**Lane 2** : Raw264.7 + LPS (1 ug per mL; 18 hours)

Lysates/proteins at 20 µg per lane.

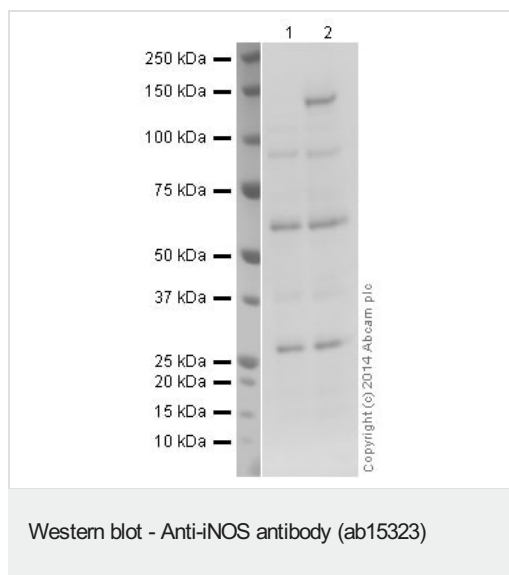
Secondary

**All lanes** : IR- goat anti-rabbit (green) at 1/10000 dilution

Performed under reducing conditions.

**Predicted band size:** 131 kDa

This blot was produced using a 4-12% Bis-Tris gel under the MOPS buffer system under denaturing, reducing conditions. The gel was run at 200V for 60 minutes before being transferred onto a nitrocellulose membrane at 30V for 70 minutes. The membrane was then blocked for an hour before being incubated with rabbit polyclonal to iNOS (ab15323; 1 ug x mL<sup>-1</sup> (based on antibody concentration of 0.2mg/ml - lot GR126616-1) and the loading control mouse anti-GAPDH antibody ([ab8245](#); 1:10000) overnight at 4°C. Antibody binding was detected using infrared (IR) labelled goat anti-rabbit (green; 1:10000) and IR-goat anti-mouse (red; 1:10000) for 1 hour at room temperature before imaging.



**All lanes :** Anti-iNOS antibody (ab15323) at 5 µg/ml

**Lane 1 :** Raw 264.7 whole cell lysate + PMA

**Lane 2 :** Raw 264.7 whole cell lysate + PMA + LPS + Brefeldin A

Lysates/proteins at 20 µg per lane.

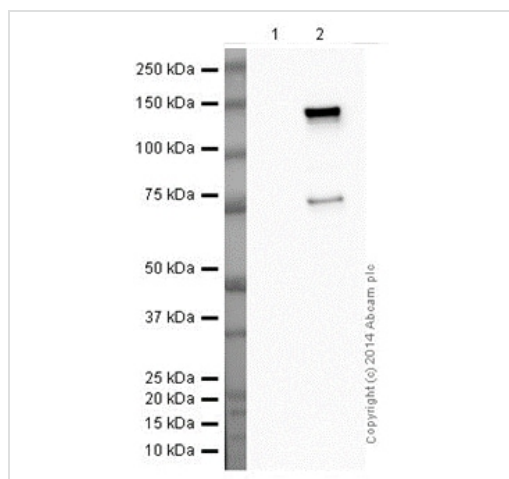
Developed using the ECL technique.

Performed under reducing conditions.

**Predicted band size:** 131 kDa

**Additional bands at:** 140 kDa. We are unsure as to the identity of these extra bands.

**Exposure time:** 8 minutes



Western blot - Anti-iNOS antibody (ab15323)

**All lanes :** Anti-iNOS antibody (ab15323) at 5 µg/ml

**Lane 1 :** Human recombinant iNOS protein

**Lane 2 :** Mouse recombinant iNOS protein

Lysates/proteins at 0.1 µg per lane.

### Secondary

**All lanes :** Goat Anti-Rabbit IgG H&L (HRP) ([ab97051](#)) at 1/50000 dilution

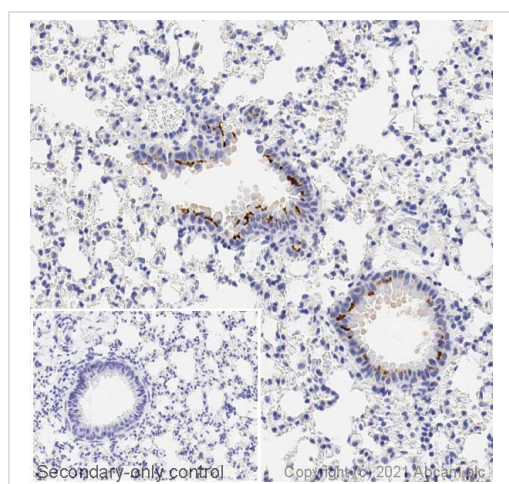
Developed using the ECL technique.

Performed under reducing conditions.

**Predicted band size:** 131 kDa

**Exposure time:** 1 minute

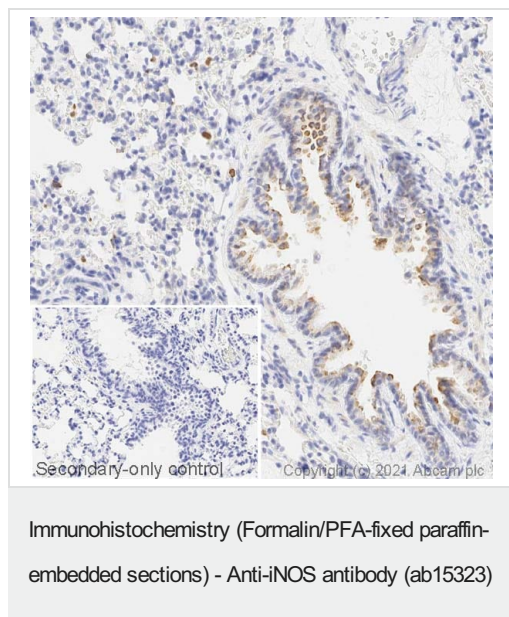
Membrane was blocked in 2% milk for 1 hour at RT. Primary antibody was incubated at 4°C overnight.



Immunohistochemistry (Formalin/PFA-fixed paraffin-embedded sections) - Anti-iNOS antibody (ab15323)

IHC image of iNOS staining in a section of formalin-fixed paraffin-embedded normal mouse lung performed on a Leica BOND™ system using the standard protocol **F**. The section was pre-treated using heat mediated antigen retrieval with sodium citrate buffer (pH6, epitope retrieval solution 1) for 20mins. The section was then incubated with ab15323, 1/100 dilution, for 15 mins at room temperature and detected using an HRP conjugated compact polymer system. DAB was used as the chromogen. The section was then counterstained with haematoxylin and mounted with DPX. The inset secondary-only control image is taken from an identical assay without primary antibody.

For other IHC staining systems (automated and non-automated) customers should optimize variable parameters such as antigen retrieval conditions, primary antibody concentration and antibody incubation times.



IHC image of iNOS staining in a section of formalin-fixed paraffin-embedded normal rat lung performed on a Leica BOND™ system using the standard protocol F. The section was pre-treated using heat mediated antigen retrieval with sodium citrate buffer (pH6, epitope retrieval solution 1) for 20mins. The section was then incubated with ab15323, 1/100 dilution, for 15 mins at room temperature and detected using an HRP conjugated compact polymer system. DAB was used as the chromogen. The section was then counterstained with haematoxylin and mounted with DPX. The inset secondary-only control image is taken from an identical assay without primary antibody.

For other IHC staining systems (automated and non-automated) customers should optimize variable parameters such as antigen retrieval conditions, primary antibody concentration and antibody incubation times.

**Please note:** All products are "FOR RESEARCH USE ONLY. NOT FOR USE IN DIAGNOSTIC PROCEDURES"

### Our Abpromise to you: Quality guaranteed and expert technical support

- Replacement or refund for products not performing as stated on the datasheet
- Valid for 12 months from date of delivery
- Response to your inquiry within 24 hours
- We provide support in Chinese, English, French, German, Japanese and Spanish
- Extensive multi-media technical resources to help you
- We investigate all quality concerns to ensure our products perform to the highest standards

If the product does not perform as described on this datasheet, we will offer a refund or replacement. For full details of the Abpromise, please visit <https://www.abcam.co.jp/abpromise> or contact our technical team.

### Terms and conditions

- Guarantee only valid for products bought direct from Abcam or one of our authorized distributors