

# Anti-Inhibin beta E chain antibody ab103167

画像数 3

### 製品の概要

製品名	Anti-Inhibin beta E chain antibody
製品の詳細	Rabbit polyclonal to Inhibin beta E chain
由来種	Rabbit
アプリケーション	<b>適用あり:</b> WB
種交差性	<b>交差種:</b> Mouse, Human
免疫原	Recombinant full length protein within Human Inhibin beta E chain aa 1 to the C-terminus. The exact immunogen sequence used to generate this antibody is proprietary information. If additional detail on the immunogen is needed to determine the suitability of the antibody for your needs, please <b><u>contact</u></b> our Scientific Support team to discuss your requirements. Database link: <b><u>P58166</u></b>
ポジティブ・コントロール	Human and Mouse liver tissue lysates; INHBE transfected 293T cell line lysate
特記事項	<p>The Life Science industry has been in the grips of a reproducibility crisis for a number of years. Abcam is leading the way in addressing this with our range of recombinant monoclonal antibodies and knockout edited cell lines for gold-standard validation. Please check that this product meets your needs before purchasing.</p> <p>If you have any questions, special requirements or concerns, please send us an inquiry and/or contact our Support team ahead of purchase. Recommended alternatives for this product can be found below, along with publications, customer reviews and Q&amp;As</p>

### 製品の特性

製品の状態	Liquid
保存方法	Shipped at 4°C. Upon delivery aliquot. Store at -20°C or -80°C. Avoid freeze / thaw cycle.
バッファー	pH: 7.40 Constituent: 100% PBS
精製度	Protein A purified
ポリ/モノ	ポリクローナル
アイソタイプ	IgG

### アプリケーション

## The Abpromise guarantee

**Abpromise保証は、**次のテスト済みアプリケーションにおけるab103167の使用に適用されます

アプリケーションノートには、推奨の開始希釈率がありますが、適切な希釈率につきましてはご検討ください。

アプリケーション	Abreviews	特記事項
WB		1/500 - 1/1000. Predicted molecular weight: 39 kDa.

## ターゲット情報

### 機能

Inhibins and activins inhibit and activate, respectively, the secretion of follitropin by the pituitary gland. Inhibins/activins are involved in regulating a number of diverse functions such as hypothalamic and pituitary hormone secretion, gonadal hormone secretion, germ cell development and maturation, erythroid differentiation, insulin secretion, nerve cell survival, embryonic axial development or bone growth, depending on their subunit composition. Inhibins appear to oppose the functions of activins.

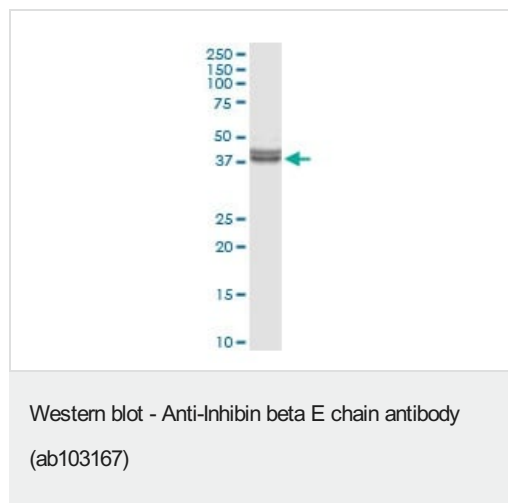
### 配列類似性

Belongs to the TGF-beta family.

### 細胞内局在

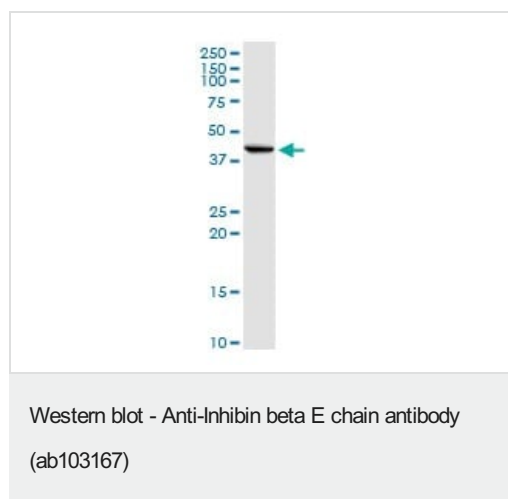
Secreted.

## 画像



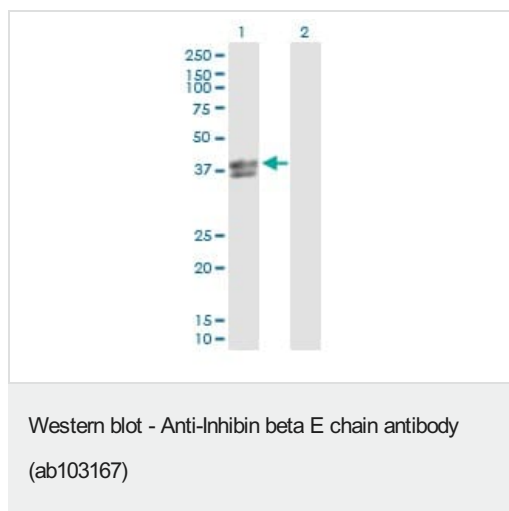
Anti-Inhibin beta E chain antibody (ab103167) at 1/500 dilution +  
Human liver tissue lysate at 50 µg

**Predicted band size:** 39 kDa



Anti-Inhibin beta E chain antibody (ab103167) at 1/500 dilution +  
Mouse liver tissue lysate at 50 µg

**Predicted band size:** 39 kDa



**All lanes :** Anti-Inhibin beta E chain antibody (ab103167) at 1/500 dilution

**Lane 1 :** INHBE transfected 293T cell line lysate

**Lane 2 :** Non-transfected 293T cell line lysate

Lysates/proteins at 25 µg per lane.

**Predicted band size:** 39 kDa

**Please note:** All products are "FOR RESEARCH USE ONLY. NOT FOR USE IN DIAGNOSTIC PROCEDURES"

### Our Abpromise to you: Quality guaranteed and expert technical support

---

- Replacement or refund for products not performing as stated on the datasheet
- Valid for 12 months from date of delivery
- Response to your inquiry within 24 hours
- We provide support in Chinese, English, French, German, Japanese and Spanish
- Extensive multi-media technical resources to help you
- We investigate all quality concerns to ensure our products perform to the highest standards

If the product does not perform as described on this datasheet, we will offer a refund or replacement. For full details of the Abpromise, please visit <https://www.abcam.co.jp/abpromise> or contact our technical team.

### Terms and conditions

---

- Guarantee only valid for products bought direct from Abcam or one of our authorized distributors