



### Anti-Inhibin alpha antibody [R1] ab14087

★★★★★ [1 Abreviews](#) [5 References](#) [画像数 8](#)

#### 製品の概要

製品名	Anti-Inhibin alpha antibody [R1]
製品の詳細	Mouse monoclonal [R1] to Inhibin alpha
由来種	Mouse
アプリケーション	<b>適用あり:</b> IHC-P
種交差性	<b>交差種:</b> Human
免疫原	<p>Synthetic peptide corresponding to Human Inhibin alpha aa 233-264. Note that this peptide corresponds to the N-terminus of the mature region of the human inhibin alpha subunit.</p> <p>Sequence:</p> <p>STPLMSWPWSPSALRLLQRPPEEPAAHANCHR</p> <p>Database link: <a href="#">P05111</a></p> <p> <a href="#">Run BLAST with</a>  <a href="#">Run BLAST with</a></p>
ポジティブ・コントロール	human ovary, testis, placenta
特記事項	<p>Inhibin alpha is expressed in a range of tissues including prostate, brain, adrenal gland, testis and ovary. The antibody may be of value in the differentiation of adrenocortical tumours, placental and gestational trophoblastic lesions and sex cord stromal tumours.</p> <p>The Life Science industry has been in the grips of a reproducibility crisis for a number of years. Abcam is leading the way in addressing this with our range of recombinant monoclonal antibodies and knockout edited cell lines for gold-standard validation. Please check that this product meets your needs before purchasing.</p> <p>If you have any questions, special requirements or concerns, please send us an inquiry and/or contact our Support team ahead of purchase. Recommended alternatives for this product can be found below, along with publications, customer reviews and Q&amp;As</p>

#### 製品の特性

製品の状態	Liquid
保存方法	Shipped at 4°C. Store at +4°C short term (1-2 weeks). Upon delivery aliquot. Store at -20°C or -80°C. Avoid freeze / thaw cycle.
バッファー	<p>Preservative: 0.08% Sodium azide</p> <p>Constituent: Tissue culture supernatant</p>

精製度	Tissue culture supernatant
一次抗体 備考	Inhibin alpha is expressed in a range of tissues including prostate, brain, adrenal gland, testis and ovary. The antibody may be of value in the differentiation of adrenocortical tumours, placental and gestational trophoblastic lesions and sex cord stromal tumours.
ポリ/モノ	モノクローナル
クローン名	R1
アイソタイプ	IgG2a

## アプリケーション

**The Abpromise guarantee** Abpromise保証は、次のテスト済みアプリケーションにおけるab14087の使用に適用されます

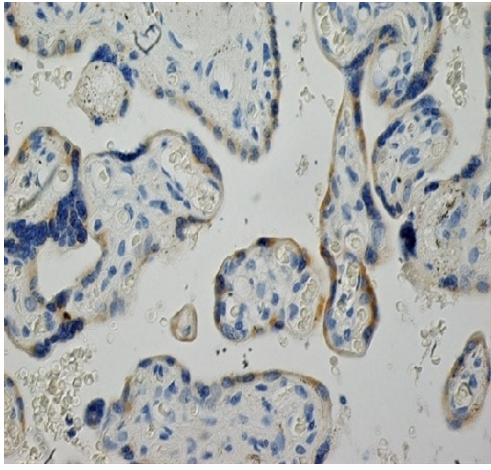
アプリケーションノートには、推奨の開始希釈率がありますが、適切な希釈率につきましてはご検討ください。

アプリケーション	Abreviews	特記事項
IHC-P	★★★★★ (1)	1/1 - 1/50. Perform heat mediated antigen retrieval before commencing with IHC staining protocol. Neat - 1/1/50. Sodium citrate pH 6.0 is recommended for antigen retrieval.

## ターゲット情報

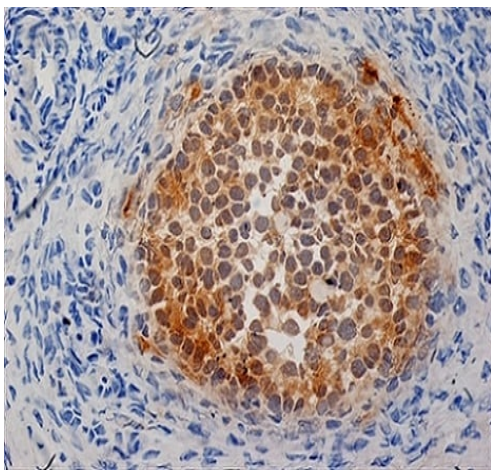
機能	Inhibins and activins inhibit and activate, respectively, the secretion of follitropin by the pituitary gland. Inhibins/activins are involved in regulating a number of diverse functions such as hypothalamic and pituitary hormone secretion, gonadal hormone secretion, germ cell development and maturation, erythroid differentiation, insulin secretion, nerve cell survival, embryonic axial development or bone growth, depending on their subunit composition. Inhibins appear to oppose the functions of activins.
組織特異性	Originally found in ovary (granulosa cells) and testis (Sertoli cells), but widely distributed in many tissues including brain and placenta. In adrenal cortex expression is limited to the zona reticularis and the innermost zona fasciculata in the normal gland, extending centripetally into the zona fasciculata in hyperplasia. Also found in adrenocortical tumors. Also expressed in prostate epithelium of benign prostatic hyperplasia, in regions of basal cell hyperplasia and in nonmalignant regions of high grade prostate cancer. Only circulating inhibin B is found in male, whereas circulating inhibins A and B are found in female.
配列類似性	Belongs to the TGF-beta family.
翻訳後修飾	Proteolytic processing yields a number of bioactive forms. The 20/23 kDa forms consist solely of the mature alpha chain, the 26/29 kDa forms consist of the most N-terminal propeptide linked through a disulfide bond to the mature alpha chain, the 50/53 kDa forms encompass the entire proprotein. Each type can be furthermore either mono- or diglycosylated, causing the mass difference.
細胞内局在	Secreted.

## 画像



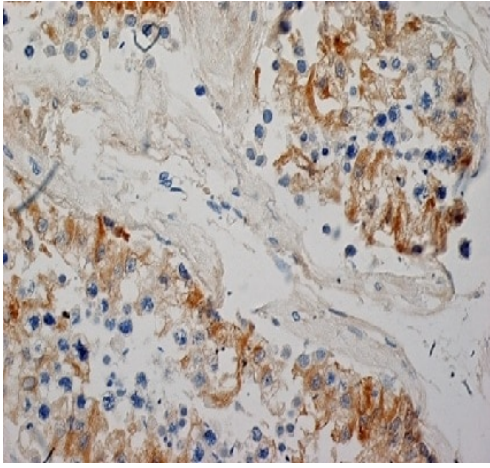
Immunohistochemistry (Formalin/PFA-fixed paraffin-embedded sections) - Anti-Inhibin alpha antibody [R1] (ab14087)

Immunohistochemical analysis of formalin fixed, paraffin embedded human placenta tissue labeling inhibin alpha with ab14087. Following antigen retrieval in Tris/EDTA pH 9.0. Blocking with peroxidase blocking reagent and 10% normal goat serum. Visualization was with DAB substrate and counter-staining with haematoxylin.



Immunohistochemistry (Formalin/PFA-fixed paraffin-embedded sections) - Anti-Inhibin alpha antibody [R1] (ab14087)

Immunohistochemical analysis of paraffin embedded human ovary tissue labeling inhibin alpha with ab14087. Blocking with 0.3%  $H_2O_2$  and 10% normal goat serum. Visualization was with DAB substrate and counter-staining with haematoxylin.

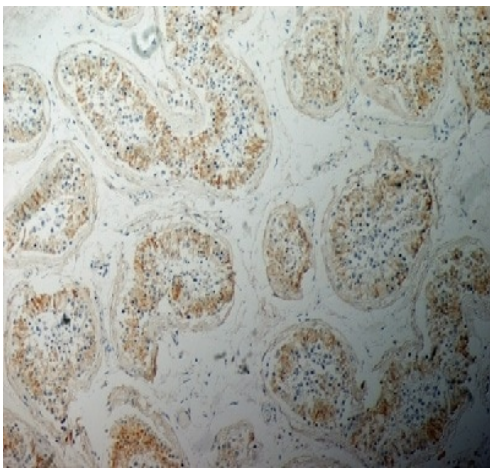


Immunohistochemistry (Formalin/PFA-fixed paraffin-embedded sections) - Anti-Inhibin alpha antibody [R1] (ab14087)

Immunohistochemical analysis of formalin fixed, paraffin embedded human testis tissue labeling inhibin alpha with ab14087. Following antigen retrieval in Tris/EDTA pH 9.0. Blocking with peroxidase blocking reagent and 10% normal goat serum. Visualization was with DAB substrate and counter-staining with haematoxylin.

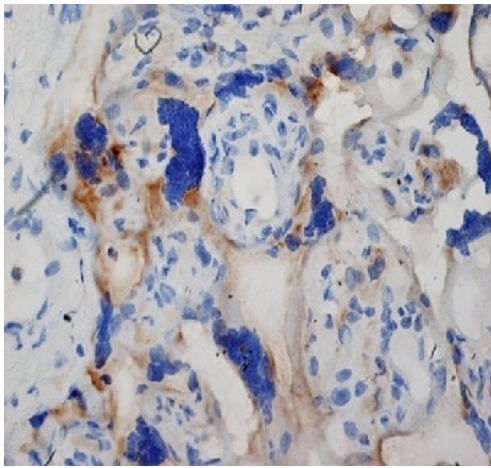
Immunohistochemistry (Formalin/PFA-fixed paraffin-embedded sections) - Anti-Inhibin alpha antibody [R1] (ab14087)

Immunohistochemical analysis of formalin fixed, paraffin embedded human testis tissue (showing sertoli cells, leydig cells and spermatogonia) labeling inhibin alpha with ab14087.



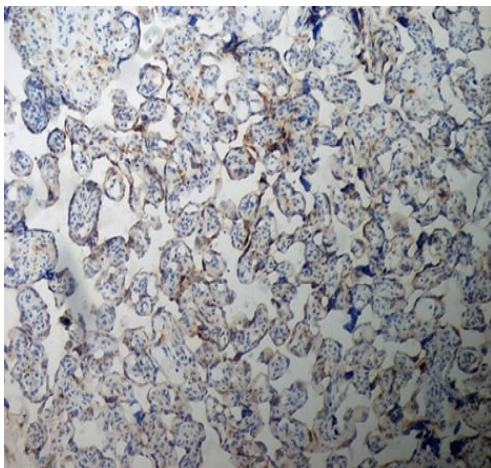
Immunohistochemistry (Formalin/PFA-fixed paraffin-embedded sections) - Anti-Inhibin alpha antibody [R1] (ab14087)

Immunohistochemical analysis of formalin fixed, paraffin embedded human testis tissue labeling inhibin alpha with ab14087. Following antigen retrieval in Tris/EDTA pH 9.0. Blocking with peroxidase blocking reagent and 10% normal goat serum. Visualization was with DAB substrate and counter-staining with haematoxylin.



Immunohistochemistry (Formalin/PFA-fixed paraffin-embedded sections) - Anti-Inhibin alpha antibody [R1] (ab14087)

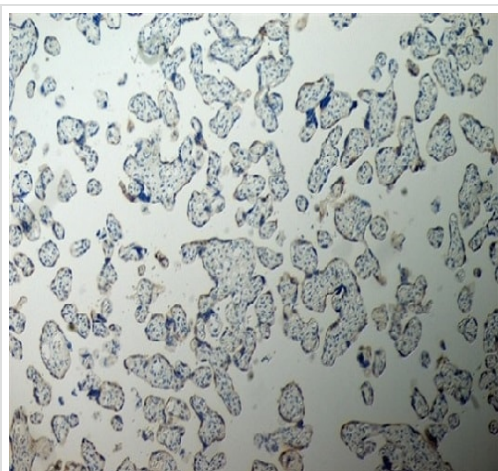
Immunohistochemical analysis of paraffin embedded human placenta tissue labeling inhibin alpha with ab14087. Blocking with 0.3%  $\text{H}_2\text{O}_2$  and 10% normal goat serum. Visualization was with DAB substrate and counter-staining with haematoxylin.



Immunohistochemistry (Formalin/PFA-fixed paraffin-embedded sections) - Anti-Inhibin alpha antibody [R1] (ab14087)

Immunohistochemical analysis of paraffin embedded human placenta tissue labeling inhibin alpha with ab14087. Blocking with 0.3%  $\text{H}_2\text{O}_2$  and 10% normal goat serum. Visualization was with DAB substrate and counter-staining with haematoxylin.





Immunohistochemistry (Formalin/PFA-fixed paraffin-embedded sections) - Anti-Inhibin alpha antibody [R1] (ab14087)

Immunohistochemical analysis of formalin fixed, paraffin embedded human placenta tissue labeling inhibin alpha with ab14087. Following antigen retrieval in Tris/EDTA pH 9.0. Blocking with peroxidase blocking reagent and 10% normal goat serum. Visualization was with DAB substrate and counter-staining with haematoxylin.

**Please note:** All products are "FOR RESEARCH USE ONLY. NOT FOR USE IN DIAGNOSTIC PROCEDURES"

### Our Abpromise to you: Quality guaranteed and expert technical support

---

- Replacement or refund for products not performing as stated on the datasheet
- Valid for 12 months from date of delivery
- Response to your inquiry within 24 hours
- We provide support in Chinese, English, French, German, Japanese and Spanish
- Extensive multi-media technical resources to help you
- We investigate all quality concerns to ensure our products perform to the highest standards

If the product does not perform as described on this datasheet, we will offer a refund or replacement. For full details of the Abpromise, please visit <https://www.abcam.co.jp/abpromise> or contact our technical team.

### Terms and conditions

---

- Guarantee only valid for products bought direct from Abcam or one of our authorized distributors