

Anti-Inhibin alpha antibody [4A2F2] ab47720

5 References [画像数 5](#)

製品の概要

製品名	Anti-Inhibin alpha antibody [4A2F2]
製品の詳細	Mouse monoclonal [4A2F2] to Inhibin alpha
由来種	Mouse
特異性	This antibody is specific for Inhibin alpha.
アプリケーション	適用あり: Flow Cyt, ICC/IF, IHC-P
種交差性	交差種: Human
免疫原	Ni-NTA purified truncated recombinant Inhibin alpha expressed in E. Coli strain BL21 (DE3)
ポジティブ・コントロール	Human lymphoid tissue, human ovary tumor tissue and human testicle tumor tissue.
特記事項	<p>The Life Science industry has been in the grips of a reproducibility crisis for a number of years. Abcam is leading the way in addressing this with our range of recombinant monoclonal antibodies and knockout edited cell lines for gold-standard validation. Please check that this product meets your needs before purchasing.</p> <p>If you have any questions, special requirements or concerns, please send us an inquiry and/or contact our Support team ahead of purchase. Recommended alternatives for this product can be found below, along with publications, customer reviews and Q&As</p>

製品の特性

製品の状態	Liquid
保存方法	Shipped at 4°C. Upon delivery aliquot and store at -20°C. Avoid freeze / thaw cycles.
バッファー	Preservative: 0.05% Sodium azide Constituent: PBS
精製度	Protein G purified
特記事項(精製)	Purified from tissue culture supernatant.
ポリ/モノ	モノクローナル
クローン名	4A2F2
アイソタイプ	IgG1

アプリケーション

The Abpromise guarantee

Abpromise保証は、次のテスト済みアプリケーションにおけるab47720の使用に適用されます

アプリケーションノートには、推奨の開始希釈率がありますが、適切な希釈率につきましてはご検討ください。

アプリケーション	Abreviews	特記事項
Flow Cyt		Use 1µg for 10 ⁶ cells. ab170190 - Mouse monoclonal IgG1, is suitable for use as an isotype control with this antibody.
ICC/IF		1/200 - 1/1000.
IHC-P		Use at an assay dependent concentration.

ターゲット情報

機能

Inhibins and activins inhibit and activate, respectively, the secretion of follitropin by the pituitary gland. Inhibins/activins are involved in regulating a number of diverse functions such as hypothalamic and pituitary hormone secretion, gonadal hormone secretion, germ cell development and maturation, erythroid differentiation, insulin secretion, nerve cell survival, embryonic axial development or bone growth, depending on their subunit composition. Inhibins appear to oppose the functions of activins.

組織特異性

Originally found in ovary (granulosa cells) and testis (Sertoli cells), but widely distributed in many tissues including brain and placenta. In adrenal cortex expression is limited to the zona reticularis and the innermost zona fasciculata in the normal gland, extending centripetally into the zona fasciculata in hyperplasia. Also found in adrenocortical tumors. Also expressed in prostate epithelium of benign prostatic hyperplasia, in regions of basal cell hyperplasia and in nonmalignant regions of high grade prostate cancer. Only circulating inhibin B is found in male, whereas circulating inhibins A and B are found in female.

配列類似性

Belongs to the TGF-beta family.

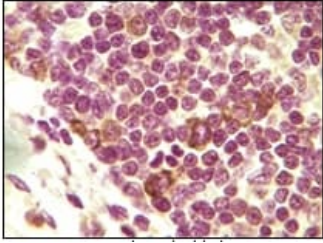
翻訳後修飾

Proteolytic processing yields a number of bioactive forms. The 20/23 kDa forms consist solely of the mature alpha chain, the 26/29 kDa forms consist of the most N-terminal propeptide linked through a disulfide bond to the mature alpha chain, the 50/53 kDa forms encompass the entire proprotein. Each type can be furthermore either mono- or diglycosylated, causing the mass difference.

細胞内局在

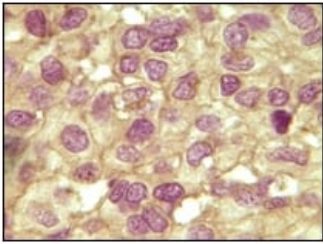
Secreted.

画像



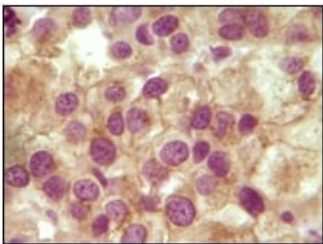
Immunohistochemistry (Formalin/PFA-fixed paraffin-embedded sections) - Anti-Inhibin alpha antibody [4A2F2] (ab47720)

Immunohistochemical analysis of paraffin-embedded human lymphoid tissue showing cytoplasmic/ membrane localization using ab47720 at a 1/500 dilution, with DAB staining.



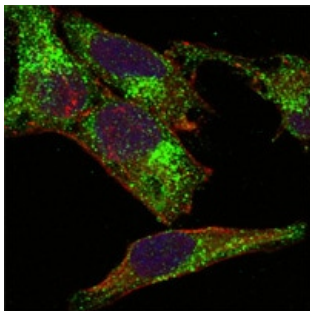
Immunohistochemistry (Formalin/PFA-fixed paraffin-embedded sections) - Anti-Inhibin alpha antibody [4A2F2] (ab47720)

Immunohistochemical analysis of paraffin-embedded human ovary tumor tissue showing cytoplasmic/ membrane localization using ab47720 at a 1/500 dilution, with DAB staining.



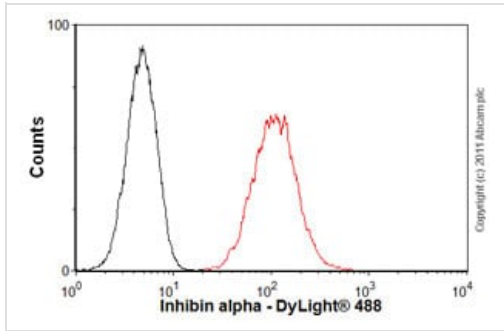
Immunohistochemistry (Formalin/PFA-fixed paraffin-embedded sections) - Anti-Inhibin alpha antibody [4A2F2] (ab47720)

Immunohistochemical analysis of paraffin-embedded human testicle tumor tissue showing cytoplasmic/ membrane localization using ab47720 at a 1/500 dilution, with DAB staining.



Immunocytochemistry/ Immunofluorescence - Anti-Inhibin alpha antibody [4A2F2] (ab47720)

ab47720 at 1/1000 dilution staining Inhibin alpha in human HeLa cells by immunocytochemistry/ Immunofluorescence. An Alexa Fluor® 488 conjugated Goat polyclonal to mouse IgG was used as secondary antibody. The primary show green staining in image while actin filaments have been labelled red with DY-554 phalloidin. Nuclei were stained blue with DRAQ5 DNA fluorescent dye.



Flow Cytometry - Anti-Inhibin alpha antibody
[4A2F2] (ab47720)

Overlay histogram showing HeLa cells stained with ab47720 (red line). The cells were fixed with 80% methanol (5 min) and then permeabilized with 0.1% PBS-Tween for 20 min. The cells were then incubated in 1x PBS / 10% normal goat serum / 0.3M glycine to block non-specific protein-protein interactions followed by the antibody (ab47720, 1µg/1x10⁶ cells) for 30 min at 22°C. The secondary antibody used was DyLight® 488 goat anti-mouse IgG (H+L) ([ab96879](#)) at 1/500 dilution for 30 min at 22°C. Isotype control antibody (black line) was mouse IgG1 [ICIGG1]([ab91353](#), 2µg/1x10⁶ cells) used under the same conditions. Acquisition of >5,000 events was performed. This antibody gave a positive signal in HeLa cells fixed with 4% paraformaldehyde/permeabilized in 0.1% PBS-Tween used under the same conditions.

Please note: All products are "FOR RESEARCH USE ONLY. NOT FOR USE IN DIAGNOSTIC PROCEDURES"

Our Abpromise to you: Quality guaranteed and expert technical support

- Replacement or refund for products not performing as stated on the datasheet
- Valid for 12 months from date of delivery
- Response to your inquiry within 24 hours
- We provide support in Chinese, English, French, German, Japanese and Spanish
- Extensive multi-media technical resources to help you
- We investigate all quality concerns to ensure our products perform to the highest standards

If the product does not perform as described on this datasheet, we will offer a refund or replacement. For full details of the Abpromise, please visit <https://www.abcam.co.jp/abpromise> or contact our technical team.

Terms and conditions

- Guarantee only valid for products bought direct from Abcam or one of our authorized distributors