

# Anti-Influenza A Virus Nucleoprotein antibody [AA5H] ab20343

★★★★★ [2 Abreviews](#) [91 References](#) [画像数 3](#)

## 製品の概要

製品名	Anti-Influenza A Virus Nucleoprotein antibody [AA5H]
製品の詳細	Mouse monoclonal [AA5H] to Influenza A Virus Nucleoprotein
由来種	Mouse
アプリケーション	<b>適用あり:</b> ICC/IF, IHC-P
種交差性	<b>交差種:</b> Influenza A
免疫原	Tissue, cells or virus corresponding to Influenza A Influenza A Virus Nucleoprotein. Influenza A/Puerto Rico/8/34 (H1N1) and A/Bangkok/1/79 (H3N2) viruses.
特記事項	<p>The Life Science industry has been in the grips of a reproducibility crisis for a number of years. Abcam is leading the way in addressing this with our range of recombinant monoclonal antibodies and knockout edited cell lines for gold-standard validation. Please check that this product meets your needs before purchasing.</p> <p>If you have any questions, special requirements or concerns, please send us an inquiry and/or contact our Support team ahead of purchase. Recommended alternatives for this product can be found below, along with publications, customer reviews and Q&amp;As</p>

## 製品の特性

製品の状態	Liquid
保存方法	Shipped at 4°C. Store at +4°C. Do Not Freeze.
バッファー	Preservative: 0.09% Sodium azide Constituent: PBS
精製度	Protein A purified
特記事項(精製)	>95% pure (SDS-PAGE).
ポリ/モノ	モノクローナル
クローン名	AA5H
ミエローマ	P3x63-Ag8.653
アイソタイプ	IgG2a
軽鎖の種類	unknown

## アプリケーション

**The Abpromise guarantee** Abpromise保証は、 次のテスト済みアプリケーションにおけるab20343の使用に適用されます  
アプリケーションノートには、推奨の開始希釈率がありますが、適切な希釈率につきましてはご確認ください。

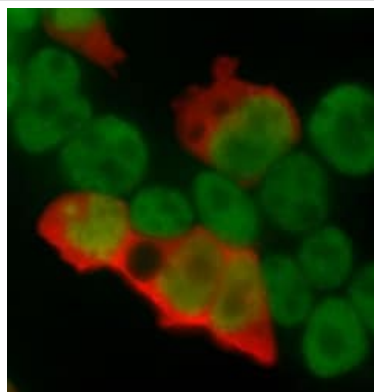
アプリケーション	Abreviews	特記事項
ICC/IF		Use at an assay dependent concentration.
IHC-P		1/1000.

## ターゲット情報

**関連性** The nucleoprotein (NP) of Influenza virus encapsulates the negative strand of the viral RNA and is essential for replicative transcription. It may also be involved in other essential functions throughout the virus life cycle. As well as binding ssRNA, NP is able to self associate to form large oligomeric complexes. NP is able to interact with a variety of other macromolecules of both viral and cellular origins. It binds the PB1 and PB2 subunits of the polymerase and the matrix protein M1. "NP has also been shown to interact with at least four cellular polypeptide families: nuclear import receptors of the importin class, filamentous (F) actin, the nuclear export receptor CRM1 and a DEAD box helicase BAT1/UAP56" (Portela et al 2002).

**細胞内局在** Host cell nucleus

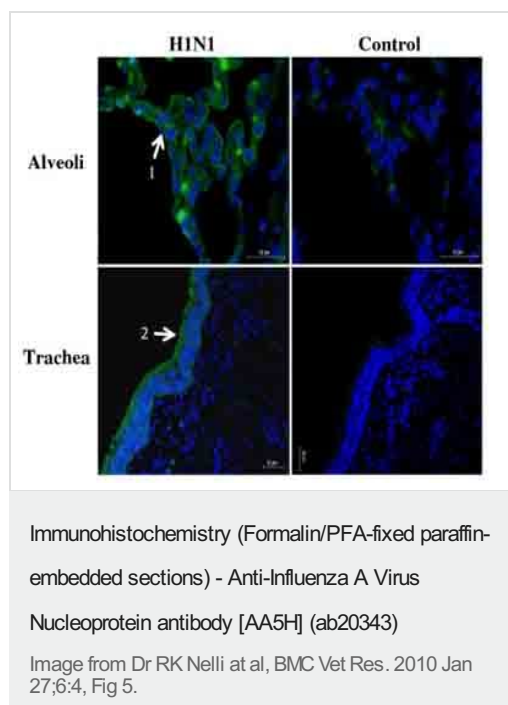
## 画像



Ab20343 positively staining formaldehyde fixed Influenza A infected human 293T cells (red) counterstained with AUF-1 (green).  
ab20343 was used at 1/1000 with no antigen retrieval.

This image is courtesy of an Abreview submitted by **Paul Digard** on **24 August 2005**. We do not have any further information relating to this image.

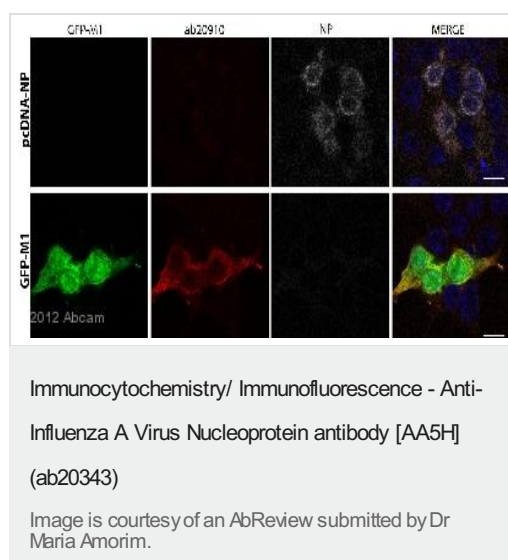
Immunocytochemistry/ Immunofluorescence - Anti-Influenza A Virus Nucleoprotein antibody [AA5H] (ab20343)



ab20343 staining Influenza A Virus Nucleoprotein in porcine lung tissue by Immunohistochemistry (Formalin-fixed, paraffin-embedded sections).

Host receptor binding assays with H1N1 classical swine strain (A/Sw/lowa/15/30), a subtype closely related to the human 1918 pandemic influenza virus. Briefly, paraffin embedded 5 µm sections of lung tissues were deparaffinised in xylene and rehydrated by alcohol. Deparaffinised tissue sections were incubated with TPCK trypsin treated swine influenza virus for 24 hours at 37°C.

Paradoxically, we found that mammalian H1N1 virus binds more efficiently at 37°C than at the usual 4°C. The sections were washed, blocked with goat serum for 30 minutes, and incubated with ab20343 at a 1/1000 dilution, overnight in a humidified chamber at 4°C. A secondary antibody, FITC-labelled goat anti-mouse IgG was applied at 1/500 dilution for 2 hours at room temperature. After three further washes with TBS, the sections were mounted with ProLong Gold anti-fa



Immunocytochemical immunofluorescence analysis of Formaldehyde-fixed human kidney epithelial cells, labelling Influenza A Virus M1 matrix protein with **ab20910** at a dilution of 1/500 incubated for 1 hour at 18°C in 1% FCS PBS. Blocking was with 1% serum incubated for 30 minutes at 18°C. Secondary was a donkey anti-goat Alexa Fluor® 568 undiluted. Cells were transfected with either GFP-M1 or pCDNA2-NP, as indicated on the left hand side of the figure. 24h later cells were fixed and stained for M1 using **ab20910** (red) or NP using ab20343 (grey). The abcam 20910 detected M1 in cells transfected with GFP-M1 but not pCDNA3-NP. Moreover, the level of co-localization between GFP-M1 and **ab20910** was quite good.

**Please note:** All products are "FOR RESEARCH USE ONLY. NOT FOR USE IN DIAGNOSTIC PROCEDURES"

### Our Abpromise to you: Quality guaranteed and expert technical support

- Replacement or refund for products not performing as stated on the datasheet
- Valid for 12 months from date of delivery

- Response to your inquiry within 24 hours
- We provide support in Chinese, English, French, German, Japanese and Spanish
- Extensive multi-media technical resources to help you
- We investigate all quality concerns to ensure our products perform to the highest standards

If the product does not perform as described on this datasheet, we will offer a refund or replacement. For full details of the Abpromise, please visit <https://www.abcam.co.jp/abpromise> or contact our technical team.

#### **Terms and conditions**

---

- Guarantee only valid for products bought direct from Abcam or one of our authorized distributors