

Anti-Influenza A Virus Hemagglutinin H1 antibody ab91531

4 References [画像数 1](#)

製品の概要

製品名	Anti-Influenza A Virus Hemagglutinin H1 antibody
製品の詳細	Rabbit polyclonal to Influenza A Virus Hemagglutinin H1
由来種	Rabbit
特異性	ab91531 is specific for the seasonal Influenza A Virus Hemagglutinin H1 and does not cross-react with Swine Influenza A (H1N1) Hemagglutinin.
アプリケーション	適用あり: ELISA, WB
種交差性	交差種: Influenza A
免疫原	A synthetic peptide from Influenza A Virus Hemagglutinin H1 (Genbank ACA28844).
ポジティブ・コントロール	Influenza A Virus Hemagglutinin H1
特記事項	<p>The Life Science industry has been in the grips of a reproducibility crisis for a number of years. Abcam is leading the way in addressing this with our range of recombinant monoclonal antibodies and knockout edited cell lines for gold-standard validation. Please check that this product meets your needs before purchasing.</p> <p>If you have any questions, special requirements or concerns, please send us an inquiry and/or contact our Support team ahead of purchase. Recommended alternatives for this product can be found below, along with publications, customer reviews and Q&As</p>

製品の特性

製品の状態	Liquid
保存方法	Shipped at 4°C. Store at +4°C.
バッファー	<p>pH: 7.2</p> <p>Preservative: 0.02% Sodium azide</p> <p>Constituent: PBS</p>
精製度	Immunogen affinity purified
特記事項(精製)	Affinity chromatography purified via peptide column.
ポリ/モノ	ポリクローナル
アイソタイプ	IgG

The Abpromise guarantee **Abpromise保証は、** 次のテスト済みアプリケーションにおけるab91531の使用に適用されます
アプリケーションノートには、推奨の開始希釈率がありますが、適切な希釈率につきましてはご検討ください。

アプリケーション	Abreviews	特記事項
ELISA		
WB		

追加情報

ELISA: Use at a concentration of 1 µg/ml. ab91531 will detect 2 ng of free peptide at 1 µg/ml.
WB: Use at a concentration of 2 µg/ml. Predicted molecular weight: 63 kDa.

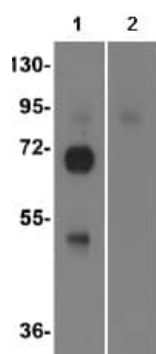
Not yet tested in other applications.
Optimal dilutions/concentrations should be determined by the end user.

ターゲット情報

関連性

Influenza A virus is a major public health threat. Novel influenza virus strains caused by genetic drift and viral recombination emerge periodically to which humans have little or no immunity, resulting in devastating pandemics. Influenza A can exist in a variety of animals; however it is in birds that all subtypes can be found. These subtypes are classified based on the combination of the virus coat glycoproteins hemagglutinin (HA) and neuraminidase (NA) subtypes. In natural infection, inactive HA is matured into HA1 and HA2 outside the cell by one or more trypsin-like, arginine-specific endoprotease secreted by the bronchial epithelial cells.

画像



All lanes : Anti-Influenza A Virus Hemagglutinin H1 antibody
(ab91531) at 2 µg/ml

Lane 1 : Recombinant Influenza A Virus Hemagglutinin H1

Lane 2 : Recombinant Swine A Virus Hemagglutinin H1

Predicted band size: 63 kDa

Western blot - Anti-Influenza A Virus Hemagglutinin
H1 antibody (ab91531)

Please note: All products are "FOR RESEARCH USE ONLY. NOT FOR USE IN DIAGNOSTIC PROCEDURES"

Our Abpromise to you: Quality guaranteed and expert technical support

- Replacement or refund for products not performing as stated on the datasheet
- Valid for 12 months from date of delivery
- Response to your inquiry within 24 hours

- We provide support in Chinese, English, French, German, Japanese and Spanish
- Extensive multi-media technical resources to help you
- We investigate all quality concerns to ensure our products perform to the highest standards

If the product does not perform as described on this datasheet, we will offer a refund or replacement. For full details of the Abpromise, please visit <https://www.abcam.co.jp/abpromise> or contact our technical team.

Terms and conditions

- Guarantee only valid for products bought direct from Abcam or one of our authorized distributors