

Anti-INCENP antibody [58-217] ab23956

★★★★★ **3 Abreviews** **5 References** 画像数 3

製品の概要

製品名	Anti-INCENP antibody [58-217]
製品の詳細	Mouse monoclonal [58-217] to INCENP
由来種	Mouse
アプリケーション	適用あり: ICC/IF, IHC-P
種交差性	交差種: Human 非交差種: Mouse, Rat
免疫原	Recombinant fragment. This information is proprietary to Abcam and/or its suppliers.
ポジティブ・コントロール	IHC-P: Human anal cancer tissue
特記事項	<p>This antibody clone is manufactured by Abcam. If you require a custom buffer formulation or conjugation for your experiments, please contact orders@abcam.com.</p> <p>The Life Science industry has been in the grips of a reproducibility crisis for a number of years. Abcam is leading the way in addressing this with our range of recombinant monoclonal antibodies and knockout edited cell lines for gold-standard validation. Please check that this product meets your needs before purchasing.</p> <p>If you have any questions, special requirements or concerns, please send us an inquiry and/or contact our Support team ahead of purchase. Recommended alternatives for this product can be found below, along with publications, customer reviews and Q&As</p>

製品の特性

製品の状態	Liquid
保存方法	Shipped at 4°C. Store at +4°C short term (1-2 weeks). Upon delivery aliquot. Store at -20°C or -80°C. Avoid freeze / thaw cycle.
バッファー	pH: 7.40 Preservative: 0.02% Sodium azide Constituent: PBS
精製度	IgG fraction
ポリ/モノ	モノクローナル
クローン名	58-217
アイソタイプ	IgG1

アプリケーション

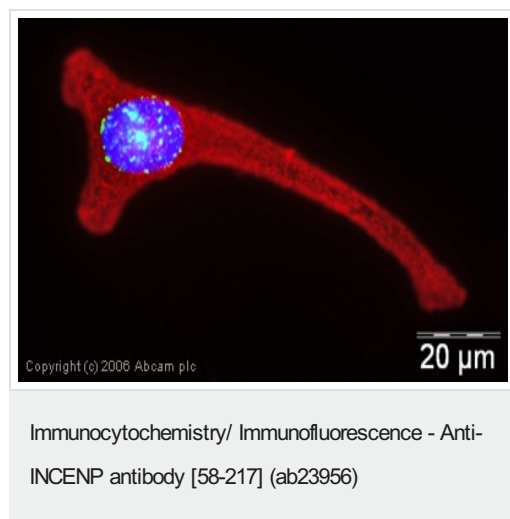
The Abpromise guarantee **Abpromise保証は、次のテスト済みアプリケーションにおけるab23956の使用に適用されます**
アプリケーションノートには、推奨の開始希釈率がありますが、適切な希釈率につきましてはご検討ください。

アプリケーション	Abreviews	特記事項
ICC/IF	★★★★★ (1)	Use a concentration of 1 µg/ml.
IHC-P	★★★★★ (1)	Use at an assay dependent concentration.

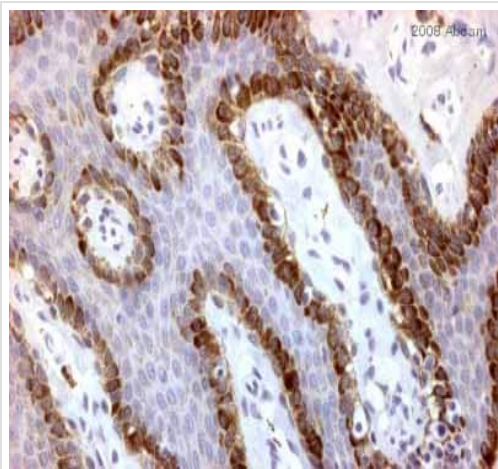
ターゲット情報

機能	Component of the chromosomal passenger complex (CPC), a complex that acts as a key regulator of mitosis. The CPC complex has essential functions at the centromere in ensuring correct chromosome alignment and segregation and is required for chromatin-induced microtubule stabilization and spindle assembly. Probably acts through association with AURKB or AURKC. Seems to bind directly to microtubules. Controls the kinetochore localization of BUB1.
配列類似性	Belongs to the INCENP family.
細胞内局在	Chromosome > centromere. Cytoplasm > cytoskeleton > spindle. Nucleus. Chromosome > centromere > kinetochore. Localizes to inner kinetochore. Localizes on chromosome arms and inner centromeres from prophase through metaphase and then transferring to the spindle midzone and midbody from anaphase through cytokinesis. Colocalizes with AURKB at mitotic chromosomes.

画像



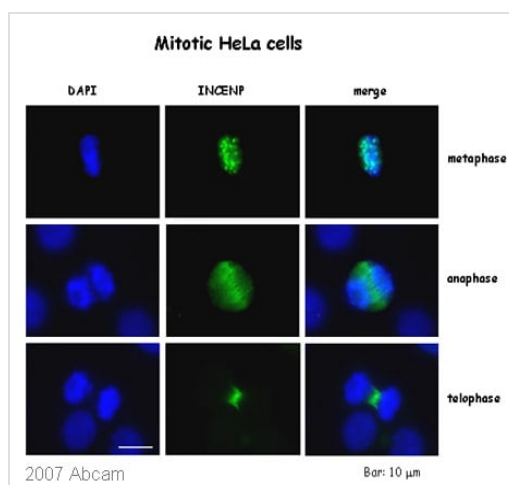
ICC/IF image of ab23956 stained human HeLa cells. The cells were methanol fixed (5 min) and incubated with the antibody (ab23956, 1 µg/ml) for 1 h at room temperature. The secondary antibody (green) was Alexa Fluor® 488 goat anti-mouse IgG (H+L) used at a 1/1000 dilution for 1 h. Image-iT™ FX Signal Enhancer was used as the primary blocking agent, 5% BSA (in TBS-T) was used for all other blocking steps. DAPI was used to stain the cell nuclei (blue). Alexa Fluor® 594 WGA was used to label plasma membranes (red).



Immunohistochemistry (Formalin/PFA-fixed paraffin-embedded sections) - Anti-INCENP antibody [58-217] (ab23956)

This image is courtesy of an Abreview submitted by Antibody Solutions Ltd.

ab23956 staining human anal cancer tissue sections by IHC-P. Sections were formaldehyde fixed and subjected to heat mediated antigen retrieval in citrate buffer (pH 6) prior to blocking in a commercially available blocking agent for 20 minutes at 20°C. The primary antibody was diluted 1/200 and incubated with the sample for 40 minutes at 20°C. A HRP-conjugated goat anti-mouse antibody was used as the secondary.



Immunocytochemistry/ Immunofluorescence - Anti-INCENP antibody [58-217] (ab23956)

Image kindly submitted by Serena Orlando, Giulia Guarguaglini and Patrizia Lavia, from the University 'La Sapienza' CNR, Italy

ab23956 staining INCENP in HeLa cells, by immunofluorescence.

optimal antibody dilution: 1 μg/ml

Please note: All products are "FOR RESEARCH USE ONLY. NOT FOR USE IN DIAGNOSTIC PROCEDURES"

Our Abpromise to you: Quality guaranteed and expert technical support

- Replacement or refund for products not performing as stated on the datasheet
- Valid for 12 months from date of delivery
- Response to your inquiry within 24 hours

- We provide support in Chinese, English, French, German, Japanese and Spanish
- Extensive multi-media technical resources to help you
- We investigate all quality concerns to ensure our products perform to the highest standards

If the product does not perform as described on this datasheet, we will offer a refund or replacement. For full details of the Abpromise, please visit <https://www.abcam.co.jp/abpromise> or contact our technical team.

Terms and conditions

- Guarantee only valid for products bought direct from Abcam or one of our authorized distributors