

Anti-Importin 9/RANBP9 antibody [EPR1352] ab124710

KO 評価済 リコンビナント RabMAb

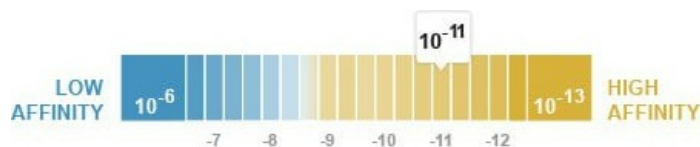
2 References 画像数 5

製品の概要

製品名	Anti-Importin 9/RANBP9 antibody [EPR1352]
製品の詳細	Rabbit monoclonal [EPR1352] to Importin 9/RANBP9
由来種	Rabbit
アプリケーション	適用あり: WB, IHC-P 適用なし: Flow Cyt or IP
種交差性	交差種: Mouse, Rat, Human
免疫原	Synthetic peptide. This information is proprietary to Abcam and/or its suppliers.
ポジティブ・コントロール	HeLa, SKBR-3, C6, and NIH/3T3 cell lysates and Human brain tissue.
特記事項	This product is a recombinant monoclonal antibody, which offers several advantages including: <ul style="list-style-type: none"> - High batch-to-batch consistency and reproducibility - Improved sensitivity and specificity - Long-term security of supply - Animal-free production For more information see here . Our RabMAb [®] technology is a patented hybridoma-based technology for making rabbit monoclonal antibodies. For details on our patents, please refer to RabMAb[®] patents .

製品の特性

製品の状態	Liquid
保存方法	Shipped at 4°C. Store at -20°C. Stable for 12 months at -20°C.
解離定数 (K _D 値)	K _D = 2.29 x 10 ⁻¹¹ M



[Learn more about K_D](#)

バッファー	pH: 7.20 Preservative: 0.05% Sodium azide Constituents: 40% Glycerol (glycerin, glycerine), 9.85% Tris glycine, 50% Tissue culture
-------	------------------------------------------------------------------------------------------------------------------------------------------

	supernatant
精製度	Protein A purified
ポリ/モノ	モノクローナル
クローン名	EPR1352
アイソタイプ	IgG

アプリケーション

The Abpromise guarantee **Abpromise保証は、**次のテスト済みアプリケーションにおけるab124710の使用に適用されます
アプリケーションノートには、推奨の開始希釈率がありますが、適切な希釈率につきましてはご検討ください。

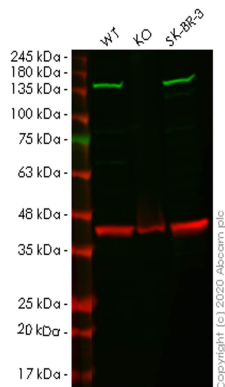
アプリケーション	Abreviews	特記事項
WB		1/1000 - 1/10000. Predicted molecular weight: 116 kDa.
IHC-P		1/500 - 1/1000. Perform heat mediated antigen retrieval before commencing with IHC staining protocol.

追加情報 Is unsuitable for Flow Cyt or IP.

ターゲット情報

機能	Functions in nuclear protein import as nuclear transport receptor. Serves as receptor for nuclear localization signals (NLS) in cargo substrates. Is thought to mediate docking of the importin/substrate complex to the nuclear pore complex (NPC) through binding to nucleoporin and the complex is subsequently translocated through the pore by an energy requiring, Ran-dependent mechanism. At the nucleoplasmic side of the NPC, Ran binds to the importin, the importin/substrate complex dissociates and importin is re-exported from the nucleus to the cytoplasm where GTP hydrolysis releases Ran. The directionality of nuclear import is thought to be conferred by an asymmetric distribution of the GTP- and GDP-bound forms of Ran between the cytoplasm and nucleus (By similarity). Mediates the nuclear import of H2B histone (By similarity), RPS7 and RPL18A. Prevents the cytoplasmic aggregation of RPS7 and RPL18A by shielding exposed basic domains. May also import H2A, H3, H4 histones (By similarity), RPL4 and RPL6.
配列類似性	Belongs to the importin beta family. Contains 1 importin N-terminal domain.
細胞内局在	Cytoplasm. Nucleus.

画像



Western blot - Anti-Importin 9/RANBP9 antibody [EPR1352] (ab124710)

All lanes : Anti-Importin 9/RANBP9 antibody [EPR1352] (ab124710) at 1/1000 dilution

Lane 1 : Wild-type HeLa cell lysate

Lane 2 : IPO9 knockout HeLa cell lysate

Lane 3 : SK-BR-3 cell lysate

Lysates/proteins at 20 µg per lane.

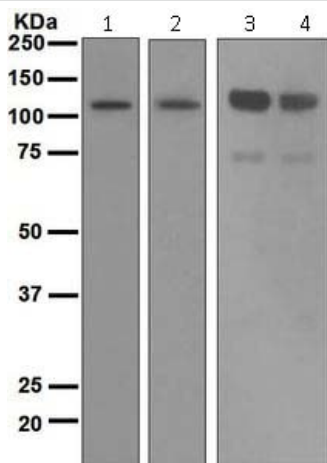
Predicted band size: 116 kDa

Lanes 1-3: Merged signal (red and green). Green - ab124710.

Red - loading control, **ab8245** observed at 36 kDa.

ab124710 was shown to react with IPO9 in wild-type HeLa cells in western blot. Loss of signal was observed when knockout cell line **ab265352** (knockout cell lysate **ab257483**) was used. Wild-type and IPO9 knockout samples were subjected to SDS-PAGE.

ab124710 and Anti-GAPDH antibody [6C5] - Loading Control (**ab8245**) were incubated overnight at 4°C at 1 in 1000 dilution and 1 in 20000 dilution respectively. Blots were developed with Goat anti-Rabbit IgG H&L (IRDye® 800CW) preadsorbed (**ab216773**) and Goat anti-Mouse IgG H&L (IRDye® 680RD) preadsorbed (**ab216776**) secondary antibodies at 1 in 10000 dilution for 1 hour at room temperature before imaging.



Western blot - Anti-Importin 9/RANBP9 antibody
[EPR1352] (ab124710)

All lanes : Anti-Importin 9/RANBP9 antibody [EPR1352]
(ab124710) at 1/1000 dilution

Lane 1 : HeLa cell lysate

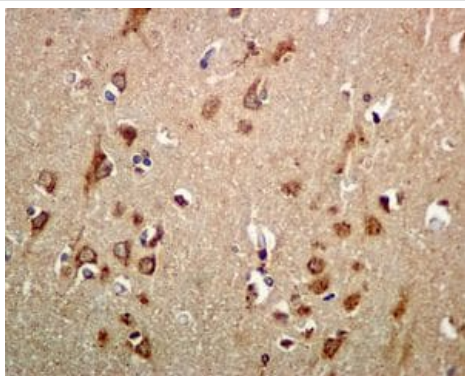
Lane 2 : SKBR-3 cell lysate

Lane 3 : C6 cell lysate

Lane 4 : NIH/3T3 cell lysate

Lysates/proteins at 10 µg per lane.

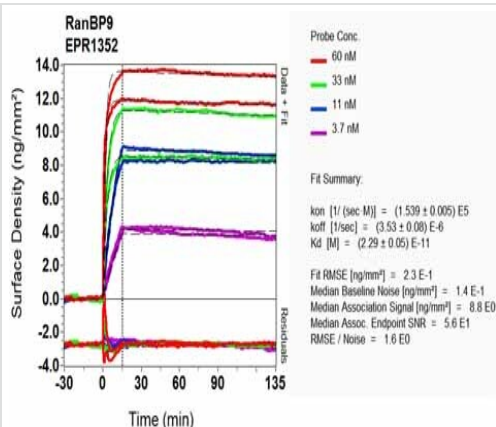
Predicted band size: 116 kDa



Immunohistochemistry (Formalin/PFA-fixed paraffin-
embedded sections) - Anti-Importin 9/RANBP9
antibody [EPR1352] (ab124710)

ab124710, at 1/500 to 1/1000, staining Importin 9/RANBP9 in
Human brain tissue by immunohistochemistry [Paraffin Embedded
Tissues (IHC-P)].

Perform heat mediated antigen retrieval before commencing with
IHC staining protocol.



OxLD Scanning - Anti-Importin 9/RANBP9 antibody
[EPR1352] (ab124710)

Equilibrium disassociation constant (K_D)

Learn more about K_D

[Click here to learn more about \$K_D\$](#)

Why choose a recombinant antibody?



Research with confidence
Consistent and reproducible results



Long-term and scalable supply
Recombinant technology



Success from the first experiment
Confirmed specificity



Ethical standards compliant
Animal-free production

Anti-Importin 9/RANBP9 antibody [EPR1352]
(ab124710)

Please note: All products are "FOR RESEARCH USE ONLY. NOT FOR USE IN DIAGNOSTIC PROCEDURES"

Our Abpromise to you: Quality guaranteed and expert technical support

- Replacement or refund for products not performing as stated on the datasheet
- Valid for 12 months from date of delivery
- Response to your inquiry within 24 hours
- We provide support in Chinese, English, French, German, Japanese and Spanish
- Extensive multi-media technical resources to help you
- We investigate all quality concerns to ensure our products perform to the highest standards

If the product does not perform as described on this datasheet, we will offer a refund or replacement. For full details of the Abpromise, please visit <https://www.abcam.co.jp/abpromise> or contact our technical team.

Terms and conditions

- Guarantee only valid for products bought direct from Abcam or one of our authorized distributors