


Anti-Importin 13 antibody ab95993

2 References [画像数 3](#)

医薬用外劇物

製品の概要

製品名	Anti-Importin 13 antibody
製品の詳細	Rabbit polyclonal to Importin 13
由来種	Rabbit
アプリケーション	適用あり: WB, IP, ICC/IF
種交差性	交差種: Human 交差が予測される動物種: Mouse, Rat, Cow 
免疫原	Synthetic peptide containing a sequence corresponding to a region within amino acids 901-963 (SMWIKALQP PGFPSARLSP EQKDTSQQI LRERVNKRRV KEMVKEFTLL CRGLHGTDYT ADY) of Human Importin 13 (NP_055467). Run BLAST with ExPASy Run BLAST with NCBI
ポジティブ・コントロール	HeLa whole cell lysate (ab150035); HeLa cells
特記事項	<p>The Life Science industry has been in the grips of a reproducibility crisis for a number of years. Abcam is leading the way in addressing this with our range of recombinant monoclonal antibodies and knockout edited cell lines for gold-standard validation. Please check that this product meets your needs before purchasing.</p> <p>If you have any questions, special requirements or concerns, please send us an inquiry and/or contact our Support team ahead of purchase. Recommended alternatives for this product can be found below, along with publications, customer reviews and Q&As</p>

製品の特性

製品の状態	Liquid
保存方法	Shipped at 4°C. Upon delivery aliquot and store at -20°C. Avoid repeated freeze / thaw cycles.
バッファー	pH: 7.00 Preservative: 0.01% Thimerosal (merthiolate) Constituents: 1.21% Tris, 0.75% Glycine, 10% Glycerol (glycerin, glycerine)
精製度	Immunogen affinity purified
ポリ/モノ	ポリクローナル
アイソタイプ	IgG

アプリケーション

The Abpromise guarantee

Abpromise保証は、次のテスト済みアプリケーションにおけるab95993の使用に適用されます

アプリケーションノートには、推奨の開始希釈率がありますが、適切な希釈率につきましてはご確認ください。

アプリケーション	Abreviews	特記事項
WB		1/500 - 1/3000. Predicted molecular weight: 108 kDa.
IP		Use at 10-1 µg/mg of lysate.
ICC/IF		1/100 - 1/200.

ターゲット情報

機能

Functions in nuclear protein import as nuclear transport receptor. Serves as receptor for nuclear localization signals (NLS) in cargo substrates. Is thought to mediate docking of the importin/substrate complex to the nuclear pore complex (NPC) through binding to nucleoporin and the complex is subsequently translocated through the pore by an energy requiring, Ran-dependent mechanism. At the nucleoplasmic side of the NPC, Ran binds to the importin, the importin/substrate complex dissociates and importin is re-exported from the nucleus to the cytoplasm where GTP hydrolysis releases Ran. The directionality of nuclear import is thought to be conferred by an asymmetric distribution of the GTP- and GDP-bound forms of Ran between the cytoplasm and nucleus (By similarity). Mediates the nuclear import of UBC9, the RBM8A/MAGOH complex, PAX6 and probably other members of the paired homeobox family. Also mediates nuclear export of eIF-1A, and the cytoplasmic release of eIF-1A is triggered by the loading of import substrates onto IPO13.

組織特異性

Expressed in fetal brain, heart, intestine and kidney.

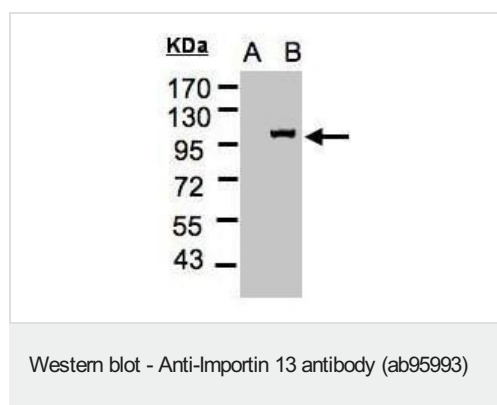
配列類似性

Belongs to the importin beta family.
Contains 14 HEAT repeats.
Contains 1 importin N-terminal domain.

細胞内局在

Cytoplasm. Nucleus.

画像

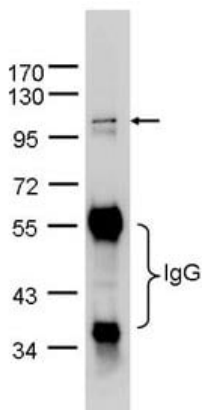


All lanes : Anti-Importin 13 antibody (ab95993)

Lane 1 : Non-transfected lysate

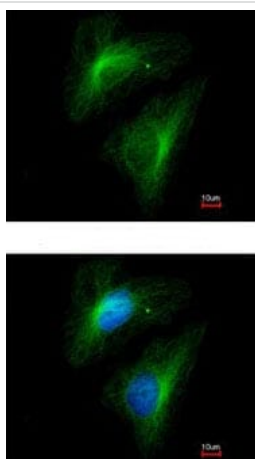
Lane 2 : IPO13 transfected lysate

Predicted band size: 108 kDa



Immunoprecipitation - Anti-Importin 13 antibody
(ab95993)

Importin 13 was immunoprecipitated from 1 mg of HeLa whole cell lysate using 10 µg of ab95993. The precipitated Importin 13 was detected with ab95993 at 1/1000 dilution.



Immunocytochemistry/ Immunofluorescence - Anti-Importin 13 antibody (ab95993)

Immunofluorescence analysis of paraformaldehyde-fixed HeLa cells, using ab95993 at 1/200 dilution. Lower image is merged with DNA probe.

Please note: All products are "FOR RESEARCH USE ONLY. NOT FOR USE IN DIAGNOSTIC PROCEDURES"

Our Abpromise to you: Quality guaranteed and expert technical support

- Replacement or refund for products not performing as stated on the datasheet
- Valid for 12 months from date of delivery
- Response to your inquiry within 24 hours
- We provide support in Chinese, English, French, German, Japanese and Spanish
- Extensive multi-media technical resources to help you
- We investigate all quality concerns to ensure our products perform to the highest standards

If the product does not perform as described on this datasheet, we will offer a refund or replacement. For full details of the Abpromise, please visit <https://www.abcam.co.jp/abpromise> or contact our technical team.

Terms and conditions

- Guarantee only valid for products bought direct from Abcam or one of our authorized distributors