


Anti-IMPG1 antibody ab113493

1 Reference [画像数 2](#)

医薬用外毒物

製品の概要

| | |
|--------------|---|
| 製品名 | Anti-IMPG1 antibody |
| 製品の詳細 | Rabbit polyclonal to IMPG1 |
| 由来種 | Rabbit |
| アプリケーション | 適用あり: WB, IHC-P |
| 種交差性 | 交差種: Human 交差が予測される動物種: Mouse, Rat  |
| 免疫原 | Recombinant fragment, corresponding to amino acids 217-437 of Human IMPG1 (BC117450). |
| ポジティブ・コントロール | Human fetal liver, fetal muscle, Fetal kidney, HepG2, 97 H, and LO2 cell lysates; Human fetal liver tissue. |
| 特記事項 | <p>The Life Science industry has been in the grips of a reproducibility crisis for a number of years. Abcam is leading the way in addressing this with our range of recombinant monoclonal antibodies and knockout edited cell lines for gold-standard validation. Please check that this product meets your needs before purchasing.</p> <p>If you have any questions, special requirements or concerns, please send us an inquiry and/or contact our Support team ahead of purchase. Recommended alternatives for this product can be found below, along with publications, customer reviews and Q&As</p> |

製品の特性

| | |
|----------|---|
| 製品の状態 | Lyophilized:Reconstitute with 200ul distilled sterile water. Please note that if you receive this product in liquid form it has already been reconstituted as described and no further reconstitution is necessary. |
| 保存方法 | Shipped at 4°C. Upon delivery aliquot and store at -20°C. Avoid repeated freeze / thaw cycles. |
| バッファー | pH: 7.20 Preservative: 0.02% Sodium azide Constituent: 1% BSA |
| 精製度 | Immunogen affinity purified |
| 特記事項(精製) | ab113493 is purified by a peptide affinity column. |
| ポリ/モノ | ポリクローナル |

アイソタイプ

IgG

アプリケーション

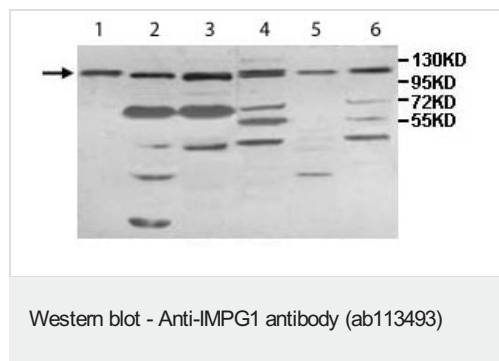
The Abpromise guarantee Abpromise保証は、次のテスト済みアプリケーションにおけるab113493の使用に適用されます
アプリケーションノートには、推奨の開始希釈率がありますが、適切な希釈率につきましてはご検討ください。

| アプリケーション | Abreviews | 特記事項 |
|----------|-----------|---|
| WB | | 1/500 - 1/1000. Predicted molecular weight: 89 kDa. |
| IHC-P | | 1/100 - 1/500. |

ターゲット情報

| | |
|-------|---|
| 機能 | May interact with hyaluronan which may serve to form a basic macromolecular scaffold comprising the insoluble interphotoreceptor matrix. |
| 組織特異性 | Abundantly expressed in retina where it is specifically expressed by cone and rod photoreceptor cells. Localizes to cone and rod photoreceptor cells surrounding the interphotoreceptor matrix of the retina. |
| 配列類似性 | Contains 2 SEA domains. |
| 翻訳後修飾 | The N-terminus is blocked. Highly glycosylated (N- and O-linked carbohydrates and sialic acid). |
| 細胞内局在 | Secreted. |

画像



All lanes : Anti-IMPG1 antibody (ab113493) at 1/500 dilution

Lane 1 : Human fetal liver lysate

Lane 2 : Human fetal muscle lysate

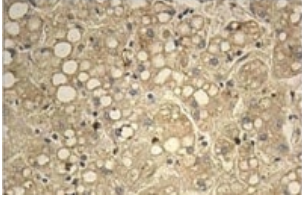
Lane 3 : Human fetal kidney lysate

Lane 4 : HepG2 cell lysate

Lane 5 : 97 H cell lysate

Lane 6 : LO2 cell lysate

Predicted band size: 89 kDa



ab113493 at 1/100 dilution staining IMP1 in Formalin-fixed, Paraffin-embedded Human fetal liver tissue by Immunohistochemistry.

Immunohistochemistry (Formalin/PFA-fixed paraffin-embedded sections) - Anti-IMP1 antibody (ab113493)

Please note: All products are "FOR RESEARCH USE ONLY. NOT FOR USE IN DIAGNOSTIC PROCEDURES"

Our Abpromise to you: Quality guaranteed and expert technical support

- Replacement or refund for products not performing as stated on the datasheet
- Valid for 12 months from date of delivery
- Response to your inquiry within 24 hours
- We provide support in Chinese, English, French, German, Japanese and Spanish
- Extensive multi-media technical resources to help you
- We investigate all quality concerns to ensure our products perform to the highest standards

If the product does not perform as described on this datasheet, we will offer a refund or replacement. For full details of the Abpromise, please visit <https://www.abcam.co.jp/abpromise> or contact our technical team.

Terms and conditions

- Guarantee only valid for products bought direct from Abcam or one of our authorized distributors