


Anti-IMPDH1 antibody ab33039

★★★★★ [3 Abreviews](#) [5 References](#) [画像数 2](#)

製品の概要

製品名	Anti-IMPDH1 antibody
製品の詳細	Rabbit polyclonal to IMPDH1
由来種	Rabbit
アプリケーション	適用あり: WB
種交差性	交差種: Mouse, Rat, Human 交差が予測される動物種: Xenopus laevis, Zebrafish 
免疫原	Synthetic peptide corresponding to Human IMPDH1 aa 500 to the C-terminus (C terminal) conjugated to keyhole limpet haemocyanin. (Peptide available as ab33038)
特記事項	<p>The immunogen used for this product shares 86% homology with IMPDH2. Cross-reactivity with this protein has not been confirmed experimentally.</p> <p>The Life Science industry has been in the grips of a reproducibility crisis for a number of years. Abcam is leading the way in addressing this with our range of recombinant monoclonal antibodies and knockout edited cell lines for gold-standard validation. Please check that this product meets your needs before purchasing.</p> <p>If you have any questions, special requirements or concerns, please send us an inquiry and/or contact our Support team ahead of purchase. Recommended alternatives for this product can be found below, along with publications, customer reviews and Q&As</p>

製品の特性

製品の状態	Liquid
保存方法	Shipped at 4°C. Store at +4°C short term (1-2 weeks). Upon delivery aliquot. Store at -20°C or -80°C. Avoid freeze / thaw cycle.
バッファー	pH: 7.40 Preservative: 0.02% Sodium azide Constituent: PBS
	Batches of this product that have a concentration < 1mg/ml may have BSA added as a stabilising agent. If you would like information about the formulation of a specific lot, please contact our scientific support team who will be happy to help.

精製度	Immunogen affinity purified
ポリ/モノ	ポリクローナル
アイソタイプ	IgG

アプリケーション

The Abpromise guarantee **Abpromise保証は、次のテスト済みアプリケーションにおけるab33039の使用に適用されます**
 アプリケーションノートには、推奨の開始希釈率がありますが、適切な希釈率につきましてはご検討ください。

アプリケーション	Abreviews	特記事項
WB	★★★★★ (1)	

追加情報

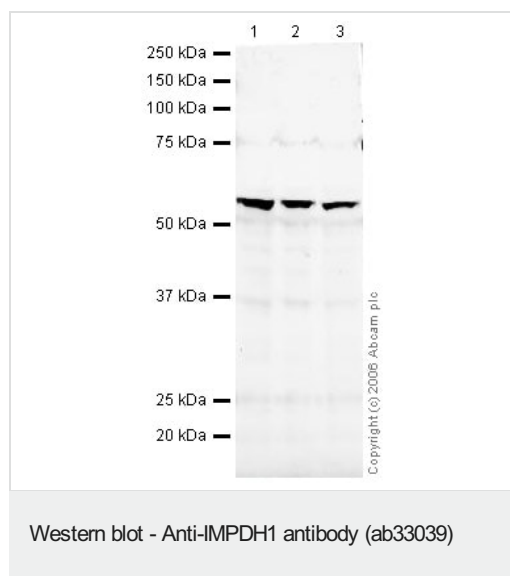
ICC/IF: 1/100 (please refer to abreview for further details).
 WB: Use at a concentration of 1 µg/ml. Detects a band of approximately 55 kDa (predicted molecular weight: 55 kDa).

Not yet tested in other applications.
 Optimal dilutions/concentrations should be determined by the end user.

ターゲット情報

機能	Rate limiting enzyme in the de novo synthesis of guanine nucleotides and therefore is involved in the regulation of cell growth. It may also have a role in the development of malignancy and the growth progression of some tumors.
組織特異性	IMP type I is the main species in normal leukocytes and type II predominates over type I in the tumor.
パスウェイ	Purine metabolism; XMP biosynthesis via de novo pathway; XMP from IMP: step 1/1.
関連疾患	Defects in IMPDH1 are the cause of retinitis pigmentosa type 10 (RP10) [MIM:180105]. RP leads to degeneration of retinal photoreceptor cells. Patients typically have night vision blindness and loss of midperipheral visual field. As their condition progresses, they lose their far peripheral visual field and eventually central vision as well. RP10 inheritance is autosomal dominant.
配列類似性	Belongs to the IMPDH/GMPR family. Contains 2 CBS domains.

画像



All lanes : Anti-IMPDPH1 antibody (ab33039) at 1 µg/ml

Lane 1 : HeLa (Human epithelial carcinoma cell line) Whole Cell Lysate

Lane 2 : Jurkat whole cell lysate ([ab7899](#))

Lane 3 : A-431 whole cell lysate ([ab7909](#))

Lysates/proteins at 20 µg per lane.

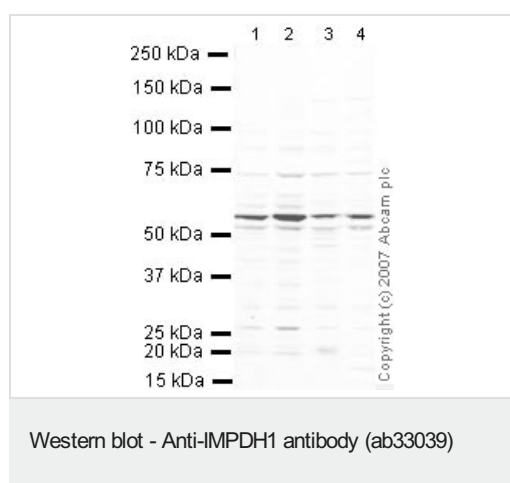
Secondary

All lanes : IRDye 680 Conjugated Goat anti-rabbit IgG (H&L) at 1/15000 dilution

Performed under reducing conditions.

Predicted band size: 55 kDa

Observed band size: 55 kDa



All lanes : Anti-IMPDPH1 antibody (ab33039) at 1 µg/ml

Lane 1 : NIH/3T3 whole cell lysate ([ab7179](#))

Lane 2 : MEF1 (Mouse embryonic fibroblast cell line) Whole Cell Lysate

Lane 3 : Ovary (Mouse) Tissue Lysate - normal tissue

Lane 4 : PC12 (Rat adrenal pheochromocytoma cell line) Whole Cell Lysate

Lysates/proteins at 10 µg per lane.

Secondary

All lanes : IRDye 680 Conjugated Goat Anti-Rabbit IgG (H+L) at 1/10000 dilution

Performed under reducing conditions.

Predicted band size: 55 kDa

Observed band size: 55 kDa

Please note: All products are "FOR RESEARCH USE ONLY. NOT FOR USE IN DIAGNOSTIC PROCEDURES"

Our Abpromise to you: Quality guaranteed and expert technical support

- Replacement or refund for products not performing as stated on the datasheet
- Valid for 12 months from date of delivery
- Response to your inquiry within 24 hours
- We provide support in Chinese, English, French, German, Japanese and Spanish
- Extensive multi-media technical resources to help you
- We investigate all quality concerns to ensure our products perform to the highest standards

If the product does not perform as described on this datasheet, we will offer a refund or replacement. For full details of the Abpromise, please visit <https://www.abcam.co.jp/abpromise> or contact our technical team.

Terms and conditions

- Guarantee only valid for products bought direct from Abcam or one of our authorized distributors