




Anti-IMPACT antibody ab95175

画像数 2

製品の概要

製品名	Anti-IMPACT antibody
製品の詳細	Rabbit polyclonal to IMPACT
由来種	Rabbit
アプリケーション	適用あり: WB, IP
種交差性	交差種: Human 交差が予測される動物種: Chimpanzee, Orangutan 
免疫原	Synthetic peptide, corresponding to a region within amino acids 270-320 (GILLGPDRFK HINNCARNIL VEKNYTNspe ESSKALGKNK KVRKDKKRNE H) of Human IMPACT (NP_060909.1).  Run BLAST with ExPASy  Run BLAST with NCBI
ポジティブ・コントロール	HeLa and 293T whole cell lysates
特記事項	<p>The Life Science industry has been in the grips of a reproducibility crisis for a number of years. Abcam is leading the way in addressing this with our range of recombinant monoclonal antibodies and knockout edited cell lines for gold-standard validation. Please check that this product meets your needs before purchasing.</p> <p>If you have any questions, special requirements or concerns, please send us an inquiry and/or contact our Support team ahead of purchase. Recommended alternatives for this product can be found below, along with publications, customer reviews and Q&As</p>

製品の特性

製品の状態	Liquid
保存方法	Shipped at 4°C. Upon delivery aliquot and store at -20°C. Avoid freeze / thaw cycles.
バッファー	pH: 7 Preservative: 0.09% Sodium azide Constituent: Tris citrate/phosphate
精製度	Immunogen affinity purified
特記事項 (精製)	ab95175 was affinity purified using an epitope specific to IMPACT immobilized on solid support.
ポリ/モノ	ポリクローナル
アイソタイプ	IgG

アプリケーション

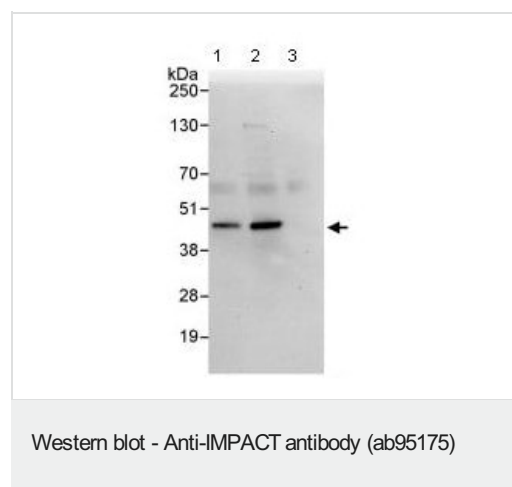
The Abpromise guarantee Abpromise保証は、 次のテスト済みアプリケーションにおけるab95175の使用に適用されます
アプリケーションノートには、推奨の開始希釈率がありますが、適切な希釈率につきましてはご検討ください。

アプリケーション	Abreviews	特記事項
WB		1/2000 - 1/10000. Predicted molecular weight: 36 kDa.
IP		Use at 2-5 µg/mg of lysate.

ターゲット情報

機能	Translational regulator that ensures constant high levels of translation under amino acid starvation. Acts by interacting with GCN1/GCN1L1, thereby preventing activation of GCN2 protein kinases (EIF2AK1 to 4) and subsequent down-regulation of protein synthesis.
組織特異性	Widely expressed. Expressed at high level in brain.
配列類似性	Belongs to the IMPACT family. Contains 1 RWD domain.

画像



All lanes : Anti-IMPACT antibody (ab95175) at 0.4 µg/ml

Lane 1 : HeLa whole cell lysate at 50 µg

Lane 2 : HeLa whole cell lysate at 15 µg

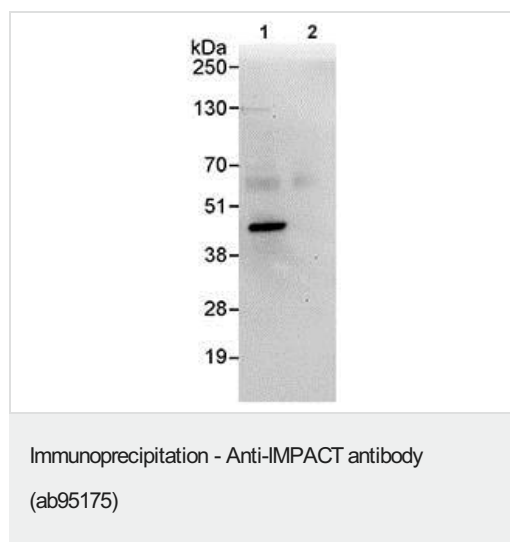
Lane 3 : HeLa whole cell lysate at 5 µg

Lane 4 : 293T whole cell lysate at 50 µg

Developed using the ECL technique.

Predicted band size: 36 kDa

Exposure time: 30 seconds



Detection of IMPACT in immunoprecipitates of HeLa whole cell lysates (1 mg for IP, 20% of IP loaded) using ab95175 at 3 µg/mg lysate for IP (Lane 1) and at 1 µg/ml for subsequent Western blot detection. Lane 2 represents control IgG IP.

Detection: Chemiluminescence with an exposure time of 30 seconds.

All lanes : Anti-IMPACT antibody (ab95175) at 0.4 µg/ml

Lane 1 : IP with IMPACT antibody

Lane 2 : IP with ab95175

Lane 3 : IP with control IgG

Please note: All products are "FOR RESEARCH USE ONLY. NOT FOR USE IN DIAGNOSTIC PROCEDURES"

Our Abpromise to you: Quality guaranteed and expert technical support

- Replacement or refund for products not performing as stated on the datasheet
- Valid for 12 months from date of delivery
- Response to your inquiry within 24 hours
- We provide support in Chinese, English, French, German, Japanese and Spanish
- Extensive multi-media technical resources to help you
- We investigate all quality concerns to ensure our products perform to the highest standards

If the product does not perform as described on this datasheet, we will offer a refund or replacement. For full details of the Abpromise, please visit <https://www.abcam.co.jp/abpromise> or contact our technical team.

Terms and conditions

- Guarantee only valid for products bought direct from Abcam or one of our authorized distributors