


# Anti-ILF1 antibody ab84761

**2 References** [画像数 1](#)

### 製品の概要

製品名	Anti-ILF1 antibody
製品の詳細	Rabbit polyclonal to ILF1
由来種	Rabbit
アプリケーション	<b>適用あり:</b> IHC-P
種交差性	<b>交差種:</b> Human <b>交差が予測される動物種:</b> Chimpanzee, Gorilla, Orangutan, Elephant 
免疫原	Synthetic peptide corresponding to a region between residue 635 and 660 of Human ILF1 (NP_004505.2).
ポジティブ・コントロール	Human Anaplastic Thyroid Carcinoma, Breast Carcinoma, Ovarian Carcinoma, Pancreatic Islet Cell Tumor, Prostate Carcinoma and Small Cell Lung Cancer.
特記事項	<p>The Life Science industry has been in the grips of a reproducibility crisis for a number of years. Abcam is leading the way in addressing this with our range of recombinant monoclonal antibodies and knockout edited cell lines for gold-standard validation. Please check that this product meets your needs before purchasing.</p> <p>If you have any questions, special requirements or concerns, please send us an inquiry and/or contact our Support team ahead of purchase. Recommended alternatives for this product can be found below, along with publications, customer reviews and Q&amp;As</p>

### 製品の特性

製品の状態	Liquid
保存方法	Shipped at 4°C. Upon delivery aliquot and store at -20°C. Avoid freeze / thaw cycles.
バッファー	pH: 6.8 Preservative: 0.09% Sodium azide Constituents: 0.1% BSA, Tris buffered saline
精製度	Immunogen affinity purified
ポリ/モノ	ポリクローナル
アイソタイプ	IgG

### アプリケーション

**The Abpromise guarantee**      **Abpromise保証は、次のテスト済みアプリケーションにおけるab84761の使用に適用されます**  
アプリケーションノートには、推奨の開始希釈率がありますが、適切な希釈率につきましてはご検討ください。

アプリケーション	Abreviews	特記事項
IHC-P		

**追加情報**

IHC-P: 1/100 - 1/500.  
Epitope exposure is recommended.  
Epitope exposure with citrate buffer will enhance staining.

Not yet tested in other applications.  
Optimal dilutions/concentrations should be determined by the end user.

## ターゲット情報

**機能** Recognizes the core sequence 5'-TAAACA-3'. Binds to NFAT-like motifs (purine-rich) in the IL2 promoter. Also binds to HIV-1 long terminal repeat. May be involved in both positive and negative regulation of important viral and cellular promoter elements.

**組織特異性** Expressed in both lymphoid and non-lymphoid cells.

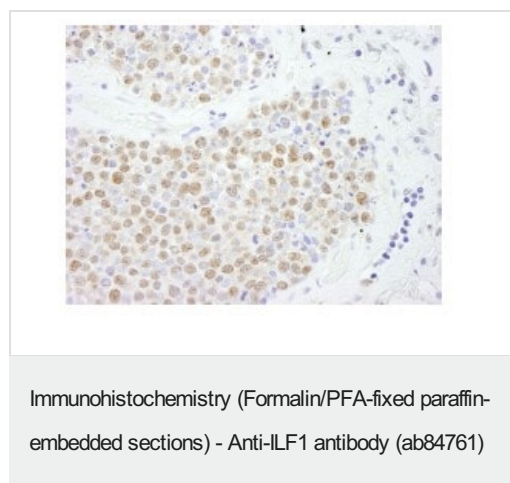
**配列類似性** Contains 1 FHA domain.  
Contains 1 fork-head DNA-binding domain.

**ドメイン** The C-terminal part of the DNA-binding domain may contribute to DNA recognition specificity.

**翻訳後修飾** Phosphorylated upon DNA damage, probably by ATM or ATR.

**細胞内局在** Nucleus.

## 画像



Detection of Human ILF1 by Immunohistochemistry in formalin-fixed, paraffin-embedded human small cell lung cancer using ab84761, at 1/250 dilution, and DAB staining.

**Please note:** All products are "FOR RESEARCH USE ONLY. NOT FOR USE IN DIAGNOSTIC PROCEDURES"

**Our Abpromise to you: Quality guaranteed and expert technical support**

- Replacement or refund for products not performing as stated on the datasheet
- Valid for 12 months from date of delivery
- Response to your inquiry within 24 hours
- We provide support in Chinese, English, French, German, Japanese and Spanish
- Extensive multi-media technical resources to help you
- We investigate all quality concerns to ensure our products perform to the highest standards

If the product does not perform as described on this datasheet, we will offer a refund or replacement. For full details of the Abpromise, please visit <https://www.abcam.co.jp/abpromise> or contact our technical team.

#### **Terms and conditions**

---

- Guarantee only valid for products bought direct from Abcam or one of our authorized distributors