

Anti-IL-31 antibody ab62579

★★★★★ **5 Abreviews** [画像数 2](#)

製品の概要

製品名	Anti-IL-31 antibody
製品の詳細	Rabbit polyclonal to IL-31
由来種	Rabbit
アプリケーション	適用あり: ICC/IF, WB
種交差性	交差種: Human
免疫原	Synthetic peptide corresponding to Human IL-31 (internal sequence).
ポジティブ・コントロール	Human skeletal muscle tissue lysate.
特記事項	<p>The Life Science industry has been in the grips of a reproducibility crisis for a number of years. Abcam is leading the way in addressing this with our range of recombinant monoclonal antibodies and knockout edited cell lines for gold-standard validation. Please check that this product meets your needs before purchasing.</p> <p>If you have any questions, special requirements or concerns, please send us an inquiry and/or contact our Support team ahead of purchase. Recommended alternatives for this product can be found below, along with publications, customer reviews and Q&As</p>

製品の特性

製品の状態	Liquid
保存方法	Shipped at 4°C. Store at +4°C short term (1-2 weeks). Upon delivery aliquot. Store at -20°C. Avoid freeze / thaw cycle.
バッファー	pH: 7.2 Preservative: 0.02% Sodium azide Constituent: PBS
精製度	Immunogen affinity purified
ポリ/モノ	ポリクローナル
アイソタイプ	IgG

アプリケーション

The Abpromise guarantee

Abpromise保証は、 次のテスト済みアプリケーションにおけるab62579の使用に適用されます

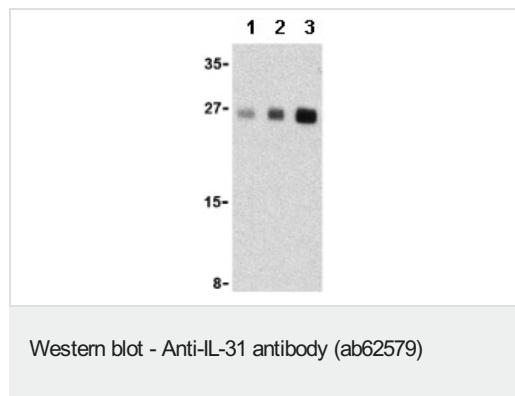
アプリケーションノートには、推奨の開始希釈率がありますが、適切な希釈率につきましてはご確認ください。

アプリケーション	Abreviews	特記事項
ICC/IF	★★★★★ (1)	Use a concentration of 20 µg/ml.
WB	★★★★★ (1)	Use a concentration of 2.5 - 5 µg/ml. Detects a band of approximately 27 kDa (predicted molecular weight: 18 kDa). Despite its predicted size, IL31 runs at approximately 27 - 30 kDa in SDS-PAGE.

ターゲット情報

機能	Activates STAT3 and possibly STAT1 and STAT5 through the IL31 heterodimeric receptor composed of IL31RA and OSMR. IL31 may function in skin immunity.
組織特異性	Detected at low levels in testis, bone marrow, skeletal muscle, kidney, colon, thymus, small intestine and trachea.
細胞内局在	Secreted.
製品の状態	Amino acids 1-23 are a signal peptide.

画像



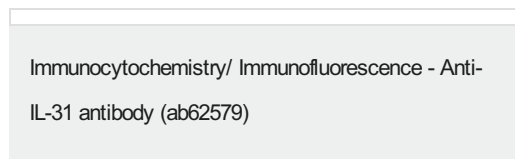
Lane 1 : Anti-IL-31 antibody (ab62579) at 2.5 µg/ml
Lane 2 : Anti-IL-31 antibody (ab62579) at 5 µg/ml
Lane 3 : Anti-IL-31 antibody (ab62579) at 10 µg/ml

All lanes : human skeletal muscle tissue lysate

Lysates/proteins at 15 µg per lane.

Predicted band size: 18 kDa
Observed band size: 27 kDa

Despite its predicted size, IL31 runs at approximately 27 - 30 kDa in SDS-PAGE.



Immunofluorescence of IL-31 in Human Skeletal Muscle cells using ab62579 at 20 ug/ml.

Please note: All products are "FOR RESEARCH USE ONLY. NOT FOR USE IN DIAGNOSTIC PROCEDURES"

Our Abpromise to you: Quality guaranteed and expert technical support

- Replacement or refund for products not performing as stated on the datasheet
- Valid for 12 months from date of delivery
- Response to your inquiry within 24 hours

- We provide support in Chinese, English, French, German, Japanese and Spanish
- Extensive multi-media technical resources to help you
- We investigate all quality concerns to ensure our products perform to the highest standards

If the product does not perform as described on this datasheet, we will offer a refund or replacement. For full details of the Abpromise, please visit <https://www.abcam.co.jp/abpromise> or contact our technical team.

Terms and conditions

- Guarantee only valid for products bought direct from Abcam or one of our authorized distributors