

Anti-IL-24 antibody ab115207

4 References [画像数 3](#)

製品の概要

製品名	Anti-IL-24 antibody
製品の詳細	Rabbit polyclonal to IL-24
由来種	Rabbit
アプリケーション	適用あり: WB, IHC-P, Flow Cyt (Intra)
種交差性	交差種: Human
免疫原	Synthetic peptide corresponding to Human IL-24 aa 100-200 conjugated to keyhole limpet haemocyanin. Run BLAST with Expasy Run BLAST with NCBI
ポジティブ・コントロール	WB: Jurkat cell lysate. IHC-P: Human prostate tissue. Flow Cyt (Intra): Jurkat cells.
特記事項	<p>The Life Science industry has been in the grips of a reproducibility crisis for a number of years. Abcam is leading the way in addressing this with our range of recombinant monoclonal antibodies and knockout edited cell lines for gold-standard validation. Please check that this product meets your needs before purchasing.</p> <p>If you have any questions, special requirements or concerns, please send us an inquiry and/or contact our Support team ahead of purchase. Recommended alternatives for this product can be found below, along with publications, customer reviews and Q&As</p>

製品の特性

製品の状態	Liquid
保存方法	Shipped at 4°C. Store at +4°C short term (1-2 weeks). Upon delivery aliquot. Store at -20°C. Avoid freeze / thaw cycle.
バッファー	Preservative: 0.05% Sodium azide Constituents: 0.2% Gelatin, 99% PBS
精製度	Protein G purified
ポリ/モノ	ポリクローナル
アイソタイプ	IgG

アプリケーション

The Abpromise guarantee

Abpromise保証は、次のテスト済みアプリケーションにおけるab115207の使用に適用されます

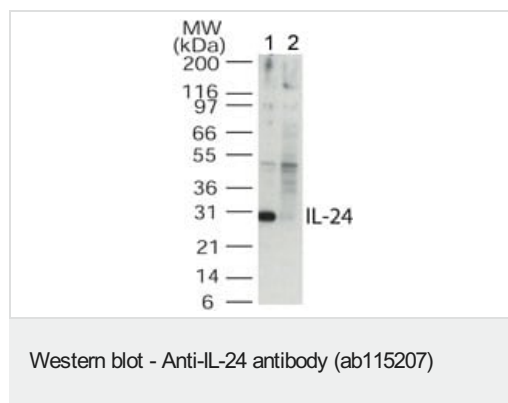
アプリケーションノートには、推奨の開始希釈率がありますが、適切な希釈率につきましてはご検討ください。

アプリケーション	Abreviews	特記事項
WB		Use a concentration of 0.5 - 5 µg/ml. Predicted molecular weight: 24 kDa.
IHC-P		Use a concentration of 10 µg/ml. Perform heat mediated antigen retrieval with citrate buffer pH 6 before commencing with IHC staining protocol. After incubation with the primary antibody, slides are incubated with biotinylated rabbit anti-goat IgG secondary antibody followed by alkaline phosphatase-streptavidin and chromogen.
Flow Cyt (Intra)		Use at an assay dependent concentration. ab171870 - Rabbit polyclonal IgG, is suitable for use as an isotype control with this antibody.

ターゲット情報

機能	Has antiproliferative properties on melanoma cells and may contribute to terminal cell differentiation.
組織特異性	Up-regulated in melanoma cells induced to terminally differentiate.
配列類似性	Belongs to the IL-10 family.
細胞内局在	Secreted.

画像

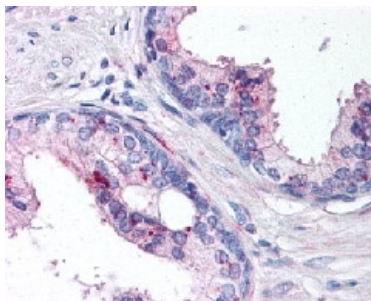


All lanes : Anti-IL-24 antibody (ab115207) at 0.5 µg/ml

Lane 1 : Jurkat cell lysate

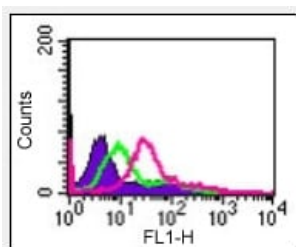
Lane 2 : Jurkat cell lysate with IL24 blocking peptide

Predicted band size: 24 kDa



Immunohistochemical analysis of formalin-fixed, paraffin-embedded Human prostate tissue, staining IL24 with **ab114207** at 10 µg/ml.

Immunohistochemistry (Formalin/PFA-fixed paraffin-embedded sections) - Anti-IL-24 antibody (ab115207)



Flow cytometry analysis of IL24 in Jurkat cells using ab115207 at 5 µg/10⁶ cells. The shaded histogram represents cells only, green represents isotype control, and pink represents anti-IL24 antibody.

Flow Cytometry (Intracellular) - Anti-IL-24 antibody (ab115207)

Please note: All products are "FOR RESEARCH USE ONLY. NOT FOR USE IN DIAGNOSTIC PROCEDURES"

Our Abpromise to you: Quality guaranteed and expert technical support

- Replacement or refund for products not performing as stated on the datasheet
- Valid for 12 months from date of delivery
- Response to your inquiry within 24 hours
- We provide support in Chinese, English, French, German, Japanese and Spanish
- Extensive multi-media technical resources to help you
- We investigate all quality concerns to ensure our products perform to the highest standards

If the product does not perform as described on this datasheet, we will offer a refund or replacement. For full details of the Abpromise, please visit <https://www.abcam.co.jp/abpromise> or contact our technical team.

Terms and conditions

- Guarantee only valid for products bought direct from Abcam or one of our authorized distributors