

### Anti-IL-23 antibody ab45420

★★★★☆ **4 Abreviews** **30 References** **画像数 6**

#### 製品の概要

---

製品名	Anti-IL-23 antibody
製品の詳細	Rabbit polyclonal to IL-23
由来種	Rabbit
アプリケーション	<b>適用あり:</b> ICC/IF, IHC-P, WB
種交差性	<b>交差種:</b> Human
免疫原	Synthetic peptide corresponding to Human IL-23 (C terminal). 14 amino acid peptide located within the last 50 amino acids of IL23.
ポジティブ・コントロール	Raji cells and Raji cell lysates.
特記事項	<p>The Life Science industry has been in the grips of a reproducibility crisis for a number of years. Abcam is leading the way in addressing this with our range of recombinant monoclonal antibodies and knockout edited cell lines for gold-standard validation. Please check that this product meets your needs before purchasing.</p> <p>If you have any questions, special requirements or concerns, please send us an inquiry and/or contact our Support team ahead of purchase. Recommended alternatives for this product can be found below, along with publications, customer reviews and Q&amp;As</p>

#### 製品の特性

---

製品の状態	Liquid
保存方法	Shipped at 4°C. Store at +4°C short term (1-2 weeks). Upon delivery aliquot. Store at -20°C. Avoid freeze / thaw cycle.
バッファー	pH: 7.2 Preservative: 0.02% Sodium azide Constituent: PBS
精製度	Immunogen affinity purified
ポリ/モノ	ポリクローナル
アイソタイプ	IgG

#### アプリケーション

---

## The Abpromise guarantee

**Abpromise保証は、次のテスト済みアプリケーションにおけるab45420の使用に適用されます**

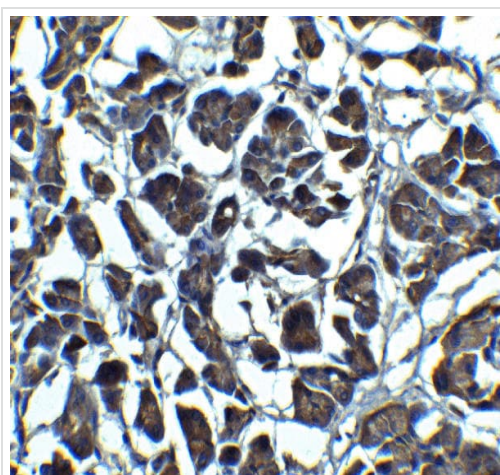
アプリケーションノートには、推奨の開始希釈率がありますが、適切な希釈率につきましてはご検討ください。

アプリケーション	Abreviews	特記事項
ICC/IF	★★★★☆ (2)	Use a concentration of 10 µg/ml.
IHC-P	★★★★☆ (1)	Use a concentration of 5 µg/ml.
WB	★★★★☆ (1)	Use a concentration of 1 - 4 µg/ml. Detects a band of approximately 24 kDa (predicted molecular weight: 21 kDa).

## ターゲット情報

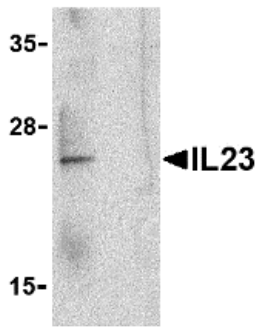
<b>機能</b>	Associates with IL12B to form the IL-23 interleukin, an heterodimeric cytokine which functions in innate and adaptive immunity. IL-23 may constitute with IL-17 an acute response to infection in peripheral tissues. IL-23 binds to an heterodimeric receptor complex composed of IL12RB1 and IL23R, activates the Jak-Stat signaling cascade, stimulates memory rather than naive T-cells and promotes production of proinflammatory cytokines. IL-23 induces autoimmune inflammation and thus may be responsible for autoimmune inflammatory diseases and may be important for tumorigenesis.
<b>組織特異性</b>	Secreted by activated dendritic and phagocytic cells and keratinocytes. Also expressed by dermal Langerhans cells (at protein level).
<b>配列類似性</b>	Belongs to the IL-6 superfamily.
<b>発生段階</b>	Expressed by newborns dendritic cells.
<b>細胞内局在</b>	Secreted. Secreted upon association with IL12B.

## 画像



Immunohistochemistry of IL-23 in human pancreas tissue with ab45420 at 5 µg/mL.

Immunohistochemistry (Formalin/PFA-fixed paraffin-embedded sections) - Anti-IL-23 antibody (ab45420)



Western blot - Anti-IL-23 antibody (ab45420)

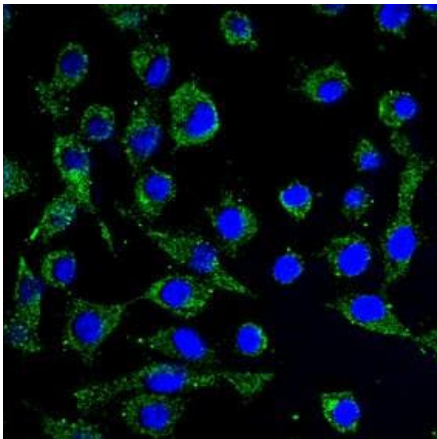
**All lanes :** Anti-IL-23 antibody (ab45420) at 1 µg/ml

**Lane 1 :** Raji lysate

**Lane 2 :** Raji lysate with IL23 P19 blocking peptide

**Predicted band size:** 21 kDa

**Observed band size:** 24 kDa

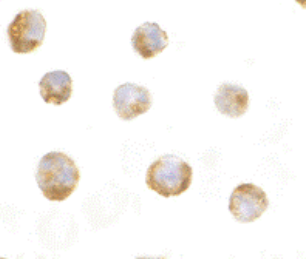


Immunocytochemistry/ Immunofluorescence - Anti-IL23 antibody (ab45420)

This image is courtesy of an anonymous Abreview

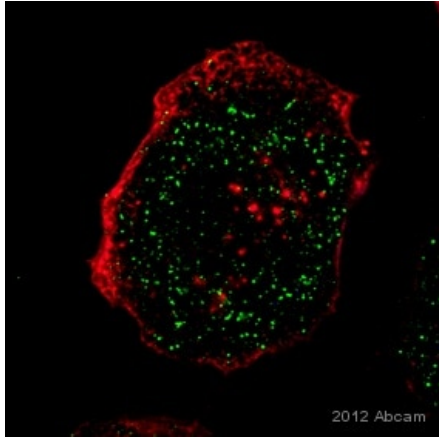
Ab45420 staining IL23 in Mouse bone marrow derived macrophages by ICC/IF

(Immunocytochemistry/Immunofluorescence). Cells were fixed with paraformaldehyde, permeabilized with 0.1% Triton X100 and blocked with 5% serum for 1 hour at 20°C. Samples were incubated with primary antibody at 1/200 dilution in 5% goat serum in PBS for 1 hour at 20°C. An Alexa Fluor® 488 goat anti-rabbit was used as the secondary antibody.



Immunocytochemistry/ Immunofluorescence - Anti-IL-23 antibody (ab45420)

ab45420 at 10 µg/ml staining IL23 in Raji cells by ICC/IF



Immunocytochemistry/ Immunofluorescence - Anti-IL-23 antibody (ab45420)

This image is courtesy of an Abreview submitted by Dr James Harris

ab45420 staining IL23 P19 (green) in Human THP-1 cells by Immunocytochemistry/ Immunofluorescence.

Cells were fixed with paraformaldehyde, permeabilized with 0.1% Triton X-100 and blocked with 5% serum for 1 hour at 20°C.

Samples were incubated with primary antibody (1/200 in 5% goat serum + 1 BSA) for 1 hour at 20°C. An AlexaFluor®488-conjugated goat anti-rabbit polyclonal IgG (1/500) was used as the secondary antibody.

Immunocytochemistry/ Immunofluorescence - Anti-IL-23 antibody (ab45420)

Immunofluorescence of IL-23 in Raji cells using ab45420 at 20 ug/ml.

**Please note:** All products are "FOR RESEARCH USE ONLY. NOT FOR USE IN DIAGNOSTIC PROCEDURES"

### Our Abpromise to you: Quality guaranteed and expert technical support

---

- Replacement or refund for products not performing as stated on the datasheet
- Valid for 12 months from date of delivery
- Response to your inquiry within 24 hours
- We provide support in Chinese, English, French, German, Japanese and Spanish
- Extensive multi-media technical resources to help you
- We investigate all quality concerns to ensure our products perform to the highest standards

If the product does not perform as described on this datasheet, we will offer a refund or replacement. For full details of the Abpromise, please visit <https://www.abcam.co.jp/abpromise> or contact our technical team.

### Terms and conditions

---

- Guarantee only valid for products bought direct from Abcam or one of our authorized distributors