

Anti-IL-21R antibody ab5980

8 References [画像数 2](#)

製品の概要

製品名	Anti-IL-21R antibody
製品の詳細	Rabbit polyclonal to IL-21R
由来種	Rabbit
アプリケーション	適用あり: ICC/IF, WB
種交差性	交差種: Human
免疫原	Synthetic peptide corresponding to Human IL-21R aa 97-111. Sequence: NITDQSGNYSQECGS (Peptide available as ab6225) Run BLAST with Run BLAST with
ポジティブ・コントロール	WB: HepG2 cell lysate. IHC-P: Rat lung tissue. ICC/IF: A431 cells.
特記事項	<p>The Life Science industry has been in the grips of a reproducibility crisis for a number of years. Abcam is leading the way in addressing this with our range of recombinant monoclonal antibodies and knockout edited cell lines for gold-standard validation. Please check that this product meets your needs before purchasing.</p> <p>If you have any questions, special requirements or concerns, please send us an inquiry and/or contact our Support team ahead of purchase. Recommended alternatives for this product can be found below, along with publications, customer reviews and Q&As</p>

製品の特性

製品の状態	Liquid
保存方法	Shipped at 4°C. Store at +4°C short term (1-2 weeks). Upon delivery aliquot. Store at -20°C long term. Avoid freeze / thaw cycle. Stable for 12 months at -20°C.
バッファー	pH: 7.2 Preservative: 0.02% Sodium azide Constituent: PBS
精製度	Immunogen affinity purified
一次抗体 備考	A novel cytokine related to IL-2 and IL-15 was recently identified and designated IL-21. The receptor for IL-21 (IL-21R, also termed NILR for novel Interleukin receptor) is a new member of the

class I cytokine receptor family. IL-21R forms a complex with the common cytokine receptor gamma chain, gp130, and mediates IL-21 signaling. Both IL-21R and the gp130 are necessary for IL-21 function. IL-21 and its receptor activate the JAK-STAT signaling pathway. IL-21R is expressed in spleen, thymus, natural killer (NK), T and B cell lines. IL-21 plays a role in the proliferation and maturation of NK, B and T cell populations.

ポリモノ

ポリクローナル

アイソタイプ

IgG

アプリケーション

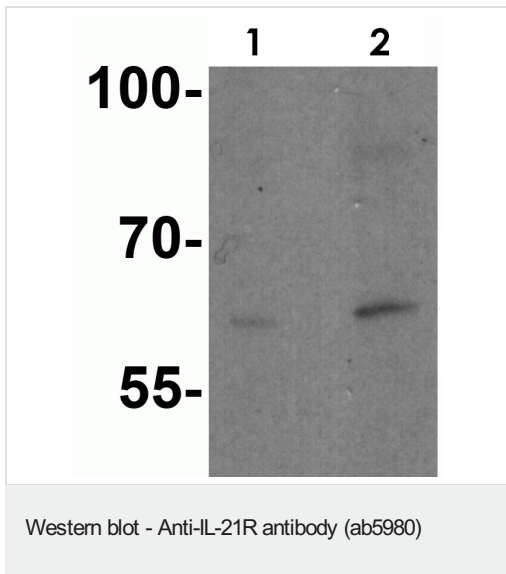
The Abpromise guarantee Abpromise保証は、次のテスト済みアプリケーションにおけるab5980の使用に適用されます
 アプリケーションノートには、推奨の開始希釈率がありますが、適切な希釈率につきましてはご検討ください。

アプリケーション	Abreviews	特記事項
ICC/IF		Use a concentration of 20 µg/ml.
WB		Use a concentration of 1 - 2 µg/ml. Detects a band of approximately 60 kDa.

ターゲット情報

機能	This is a receptor for interleukin-21.
組織特異性	Selectively expressed in lymphoid tissues. Most highly expressed in thymus and spleen.
配列類似性	Belongs to the type I cytokine receptor family. Type 4 subfamily. Contains 2 fibronectin type-III domains.
ドメイン	The WSXWS motif appears to be necessary for proper protein folding and thereby efficient intracellular transport and cell-surface receptor binding. The box 1 motif is required for JAK interaction and/or activation.
翻訳後修飾	C-mannosylated at Trp-214 in the WSXWS motif, the sugar chain makes extensive hydrogen bonds with Asn-73 sugar, and bridges the two fibronectin domains transforming the V-shaped receptor into an A-frame.
細胞内局在	Membrane.

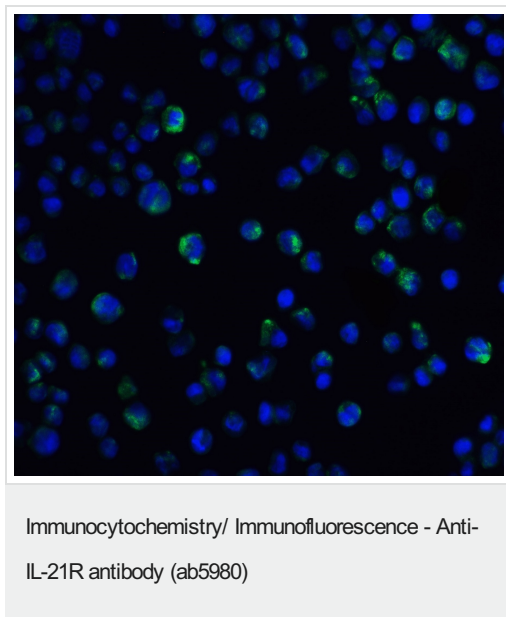
画像



Lane 1 : Anti-IL-21R antibody (ab5980) at 1 µg/ml

Lane 2 : Anti-IL-21R antibody (ab5980) at 2 µg/ml

All lanes : HepG2 cell lysate



Immunocytochemistry/Immunofluorescence labelling A431 cells with ab5980 at 20µg/ml.

Please note: All products are "FOR RESEARCH USE ONLY. NOT FOR USE IN DIAGNOSTIC PROCEDURES"

Our Abpromise to you: Quality guaranteed and expert technical support

- Replacement or refund for products not performing as stated on the datasheet
- Valid for 12 months from date of delivery
- Response to your inquiry within 24 hours

- We provide support in Chinese, English, French, German, Japanese and Spanish
- Extensive multi-media technical resources to help you
- We investigate all quality concerns to ensure our products perform to the highest standards

If the product does not perform as described on this datasheet, we will offer a refund or replacement. For full details of the Abpromise, please visit <https://www.abcam.co.jp/abpromise> or contact our technical team.

Terms and conditions

- Guarantee only valid for products bought direct from Abcam or one of our authorized distributors