

Anti-IL-1RAPL1 antibody [MM0353-3R16] ab90453

画像数 1

製品の概要

| | |
|----------|---|
| 製品名 | Anti-IL-1RAPL1 antibody [MM0353-3R16] |
| 製品の詳細 | Mouse monoclonal [MM0353-3R16] to IL-1RAPL1 |
| 由来種 | Mouse |
| アプリケーション | 適用あり: WB |
| 種交差性 | 交差種: Human |
| 免疫原 | Recombinant fragment corresponding to Human IL-1RAPL1. |
| 特記事項 | <p>The Life Science industry has been in the grips of a reproducibility crisis for a number of years. Abcam is leading the way in addressing this with our range of recombinant monoclonal antibodies and knockout edited cell lines for gold-standard validation. Please check that this product meets your needs before purchasing.</p> <p>If you have any questions, special requirements or concerns, please send us an inquiry and/or contact our Support team ahead of purchase. Recommended alternatives for this product can be found below, along with publications, customer reviews and Q&As</p> |

製品の特性

| | |
|-----------|---|
| 製品の状態 | Liquid |
| 保存方法 | Shipped at 4°C. Upon delivery aliquot and store at -20°C. Avoid repeated freeze / thaw cycles. |
| バッファー | Constituent: PBS |
| 精製度 | Protein G purified |
| 特記事項 (精製) | The IgG fraction of culture supernatant was purified by Protein G affinity chromatography and filtered through a 0.2 µm filter. |
| ポリ/モノ | モノクローナル |
| クローン名 | MM0353-3R16 |
| アイソタイプ | IgG2 |

アプリケーション

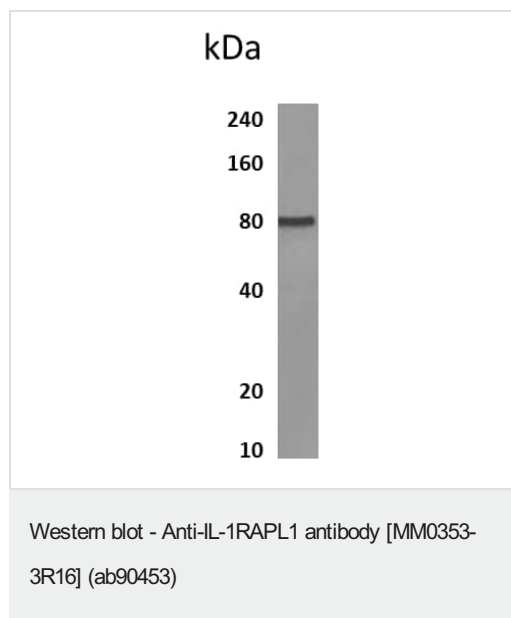
The Abpromise guarantee **Abpromise保証は、** 次のテスト済みアプリケーションにおけるab90453の使用に適用されます
 アプリケーションノートには、推奨の開始希釈率がありますが、適切な希釈率につきましてはご確認ください。

| アプリケーション | Abreviews | 特記事項 |
|----------|-----------|---|
| WB | | 1/500 - 1/2000. Predicted molecular weight: 80 kDa. |

ターゲット情報

| | |
|-------|---|
| 機能 | May regulate secretion and presynaptic differentiation through inhibition of the activity of N-type voltage-gated calcium channel. May activate the MAP kinase JNK. |
| 組織特異性 | Detected at low levels in heart, skeletal muscle, ovary, skin, amygdala, caudate nucleus, corpus callosum, hippocampus, substantia nigra and thalamus. Detected at very low levels in tonsil, prostate, testis, small intestine, placenta, colon and fetal liver. |
| 関連疾患 | Defects in IL1RAPL1 are the cause of mental retardation X-linked type 21 (MRX21) [MIM:300143]. Mental retardation is a mental disorder characterized by significantly sub-average general intellectual functioning associated with impairments in adaptative behavior and manifested during the developmental period. Non-syndromic mental retardation patients do not manifest other clinical signs. |
| 配列類似性 | Belongs to the interleukin-1 receptor family. Contains 3 Ig-like C2-type (immunoglobulin-like) domains. Contains 1 TIR domain. |
| 細胞内局在 | Cell membrane. Cytoplasm. May localize to the cell body and growth cones of dendrite-like processes. |

画像



Anti-IL-1RAPL1 antibody [MM0353-3R16] (ab90453) at 1/2000 dilution (Mouse anti human IL-1 R8) + Lysates of human placental tissue

Predicted band size: 80 kDa

Observed band size: 80 kDa

Please note: All products are "FOR RESEARCH USE ONLY. NOT FOR USE IN DIAGNOSTIC PROCEDURES"

Our Abpromise to you: Quality guaranteed and expert technical support

- Replacement or refund for products not performing as stated on the datasheet
- Valid for 12 months from date of delivery
- Response to your inquiry within 24 hours
- We provide support in Chinese, English, French, German, Japanese and Spanish
- Extensive multi-media technical resources to help you
- We investigate all quality concerns to ensure our products perform to the highest standards

If the product does not perform as described on this datasheet, we will offer a refund or replacement. For full details of the Abpromise, please visit <https://www.abcam.co.jp/abpromise> or contact our technical team.

Terms and conditions

- Guarantee only valid for products bought direct from Abcam or one of our authorized distributors