


Anti-IL-1RAPL1 antibody ab117480

画像数 1

製品の概要

製品名	Anti-IL-1RAPL1 antibody
製品の詳細	Rabbit polyclonal to IL-1RAPL1
由来種	Rabbit
アプリケーション	適用あり: WB
種交差性	交差種: Mouse 交差が予測される動物種: Chicken, Human, Chimpanzee, Macaque monkey, Gorilla, Chinese hamster, Orangutan 
免疫原	Synthetic peptide. This information is proprietary to Abcam and/or its suppliers.
ポジティブ・コントロール	This antibody gave a positive signal in Mouse Brain and Mouse Hippocampus tissue lysates.
特記事項	<p>The Life Science industry has been in the grips of a reproducibility crisis for a number of years. Abcam is leading the way in addressing this with our range of recombinant monoclonal antibodies and knockout edited cell lines for gold-standard validation. Please check that this product meets your needs before purchasing.</p> <p>If you have any questions, special requirements or concerns, please send us an inquiry and/or contact our Support team ahead of purchase. Recommended alternatives for this product can be found below, along with publications, customer reviews and Q&As</p>

製品の特性

製品の状態	Liquid
保存方法	Shipped at 4°C. Store at +4°C short term (1-2 weeks). Upon delivery aliquot. Store at -20°C or -80°C. Avoid freeze / thaw cycle.
バッファー	<p>pH: 7.40</p> <p>Preservative: 0.02% Sodium azide</p> <p>Constituent: PBS</p> <p>Batches of this product that have a concentration < 1mg/ml may have BSA added as a stabilising agent. If you would like information about the formulation of a specific lot, please contact our scientific support team who will be happy to help.</p>
精製度	Immunogen affinity purified
ポリ/モノ	ポリクローナル

アプリケーション

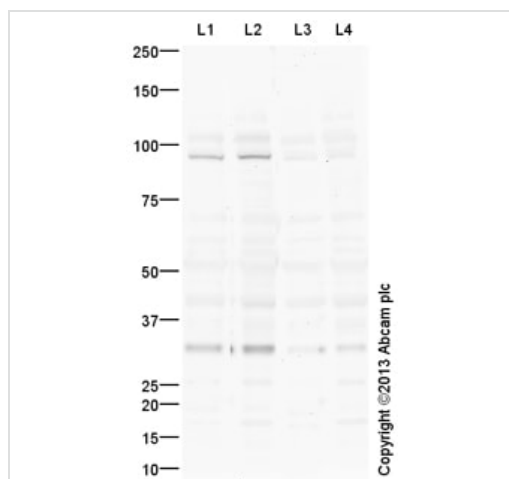
The Abpromise guarantee Abpromise保証は、次のテスト済みアプリケーションにおけるab117480の使用に適用されます
アプリケーションノートには、推奨の開始希釈率がありますが、適切な希釈率につきましてはご検討ください。

アプリケーション	Abreviews	特記事項
WB		1/250. Detects a band of approximately 95 kDa (predicted molecular weight: 80 kDa).

ターゲット情報

機能	May regulate secretion and presynaptic differentiation through inhibition of the activity of N-type voltage-gated calcium channel. May activate the MAP kinase JNK.
組織特異性	Detected at low levels in heart, skeletal muscle, ovary, skin, amygdala, caudate nucleus, corpus callosum, hippocampus, substantia nigra and thalamus. Detected at very low levels in tonsil, prostate, testis, small intestine, placenta, colon and fetal liver.
関連疾患	Defects in IL1RAPL1 are the cause of mental retardation X-linked type 21 (MRX21) [MIM:300143]. Mental retardation is a mental disorder characterized by significantly sub-average general intellectual functioning associated with impairments in adaptative behavior and manifested during the developmental period. Non-syndromic mental retardation patients do not manifest other clinical signs.
配列類似性	Belongs to the interleukin-1 receptor family. Contains 3 Ig-like C2-type (immunoglobulin-like) domains. Contains 1 TIR domain.
細胞内局在	Cell membrane. Cytoplasm. May localize to the cell body and growth cones of dendrite-like processes.

画像



Western blot - Anti-IL-1RAPL1 antibody (ab117480)

All lanes : Anti-IL-1RAPL1 antibody (ab117480) at 1/250 dilution

Lane 1 : Brain (Mouse) Tissue Lysate

Lane 2 : Mouse Hippocampus Tissue Lysate

Lane 3 : Brain (Mouse) Tissue Lysate with Immunising peptide at 1/250 dilution

Lane 4 : Mouse Hippocampus Tissue Lysate with Immunising peptide at 1/250 dilution

Lysates/proteins at 25 µg per lane.

Secondary

All lanes : Goat Anti-Rabbit IgG H&L (HRP) ([ab97051](#)) at 1/10000 dilution

Developed using the ECL technique.

Performed under reducing conditions.

Predicted band size: 80 kDa

Observed band size: 95 kDa

Additional bands at: 103 kDa (possible non-specific binding), 32 kDa (possible non-specific binding)

Exposure time: 12 minutes

IL1RAPL1 contains a number of potential glycosylation sites (SwissProt) which may explain its migration at a higher molecular weight than predicted.

This blot was produced using a 10% Bis-tris gel under the MOPS buffer system. The gel was run at 200V for 50 minutes before being transferred onto a Nitrocellulose membrane at 30V for 70 minutes. The membrane was then blocked for an hour using 5% Bovine Serum Albumin before being incubated with ab117480 overnight at 4°C. Antibody binding was detected using an anti-rabbit antibody conjugated to HRP, and visualised using ECL development solution.

Please note: All products are "FOR RESEARCH USE ONLY. NOT FOR USE IN DIAGNOSTIC PROCEDURES"

Our Abpromise to you: Quality guaranteed and expert technical support

- Replacement or refund for products not performing as stated on the datasheet
- Valid for 12 months from date of delivery
- Response to your inquiry within 24 hours

- We provide support in Chinese, English, French, German, Japanese and Spanish
- Extensive multi-media technical resources to help you
- We investigate all quality concerns to ensure our products perform to the highest standards

If the product does not perform as described on this datasheet, we will offer a refund or replacement. For full details of the Abpromise, please visit <https://www.abcam.co.jp/abpromise> or contact our technical team.

Terms and conditions

- Guarantee only valid for products bought direct from Abcam or one of our authorized distributors