

Anti-IL-17C antibody ab77183

画像数 1

製品の概要

製品名	Anti-IL-17C antibody
製品の詳細	Rabbit polyclonal to IL-17C
由来種	Rabbit
アプリケーション	適用あり: WB
種交差性	交差種: Human
免疫原	Synthetic peptide corresponding to Human IL-17C aa 1-100 conjugated to keyhole limpet haemocyanin. (Peptide available as ab94887)
ポジティブ・コントロール	This antibody gave a positive signal in the following whole cell lysates: THP1; Raji; K562.
特記事項	<p>The Life Science industry has been in the grips of a reproducibility crisis for a number of years. Abcam is leading the way in addressing this with our range of recombinant monoclonal antibodies and knockout edited cell lines for gold-standard validation. Please check that this product meets your needs before purchasing.</p> <p>If you have any questions, special requirements or concerns, please send us an inquiry and/or contact our Support team ahead of purchase. Recommended alternatives for this product can be found below, along with publications, customer reviews and Q&As</p>

製品の特性

製品の状態	Liquid
保存方法	Shipped at 4°C. Store at +4°C short term (1-2 weeks). Upon delivery aliquot. Store at -20°C or -80°C. Avoid freeze / thaw cycle.
バッファー	pH: 7.40 Preservative: 0.02% Sodium azide Constituent: PBS
精製度	Immunogen affinity purified
ポリ/モノ	ポリクローナル
	Batches of this product that have a concentration < 1mg/ml may have BSA added as a stabilising agent. If you would like information about the formulation of a specific lot, please contact our scientific support team who will be happy to help.

アプリケーション

The Abpromise guarantee **Abpromise保証は、次のテスト済みアプリケーションにおけるab77183の使用に適用されず**

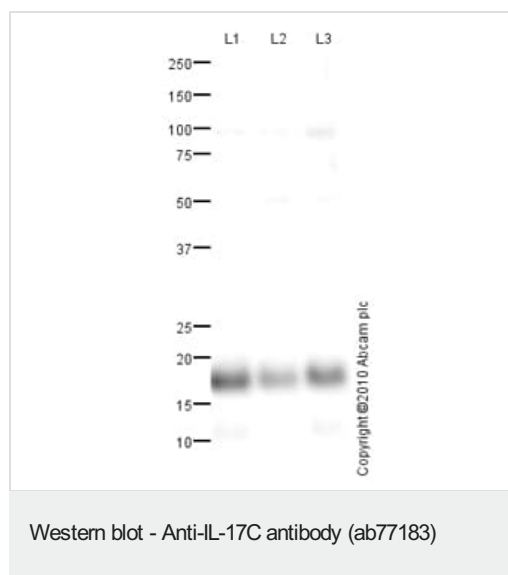
アプリケーションノートには、推奨の開始希釈率がありますが、適切な希釈率につきましてはご検討ください。

アプリケーション	Abreviews	特記事項
WB		Use a concentration of 1 µg/ml. Detects a band of approximately 18 kDa (predicted molecular weight: 21 kDa).

ターゲット情報

機能	Stimulates the release of tumor necrosis factor alpha and IL-1-beta from the monocytic cell line THP-1.
配列類似性	Belongs to the IL-17 family.
細胞内局在	Secreted.

画像



All lanes : Anti-IL-17C antibody (ab77183) at 1 µg/ml

Lane 1 : THP1 (Human acute monocytic leukemia cell line) Whole Cell Lysate

Lane 2 : Raji (Human Burkitt's lymphoma cell line) Whole Cell Lysate

Lane 3 : K562 (Human erythromyeloblastoid leukemia cell line) Whole Cell Lysate

Lysates/proteins at 10 µg per lane.

Secondary

All lanes : Goat polyclonal to Rabbit IgG - H&L - Pre-Adsorbed (HRP) at 1/3000 dilution

Developed using the ECL technique.

Performed under reducing conditions.

Predicted band size: 21 kDa

Observed band size: 18 kDa

Additional bands at: 100 kDa. We are unsure as to the identity of

these extra bands.

Exposure time: 20 minutes

The band observed at 18 kDa could potentially be the mature form of Human Interleukin-17C.

Please note: All products are "FOR RESEARCH USE ONLY. NOT FOR USE IN DIAGNOSTIC PROCEDURES"

Our Abpromise to you: Quality guaranteed and expert technical support

- Replacement or refund for products not performing as stated on the datasheet
- Valid for 12 months from date of delivery
- Response to your inquiry within 24 hours
- We provide support in Chinese, English, French, German, Japanese and Spanish
- Extensive multi-media technical resources to help you
- We investigate all quality concerns to ensure our products perform to the highest standards

If the product does not perform as described on this datasheet, we will offer a refund or replacement. For full details of the Abpromise, please visit <https://www.abcam.co.jp/abpromise> or contact our technical team.

Terms and conditions

- Guarantee only valid for products bought direct from Abcam or one of our authorized distributors