

Anti-IL-15RA antibody [JM7A4] ab91270

[3 References](#) [画像数 1](#)

製品の概要

製品名	Anti-IL-15RA antibody [JM7A4]
製品の詳細	Mouse monoclonal [JM7A4] to IL-15RA
由来種	Mouse
アプリケーション	適用あり: WB, IP, Flow Cyt
種交差性	交差種: Human
免疫原	Recombinant full length protein corresponding to Human IL-15RA.
ポジティブ・コントロール	LPS and IFN gamma stimulated PBMCs
特記事項	<p>The Life Science industry has been in the grips of a reproducibility crisis for a number of years. Abcam is leading the way in addressing this with our range of recombinant monoclonal antibodies and knockout edited cell lines for gold-standard validation. Please check that this product meets your needs before purchasing.</p> <p>If you have any questions, special requirements or concerns, please send us an inquiry and/or contact our Support team ahead of purchase. Recommended alternatives for this product can be found below, along with publications, customer reviews and Q&As</p>

製品の特性

製品の状態	Liquid
保存方法	Shipped at 4°C. Store at +4°C short term (1-2 weeks). Store at -20°C or -80°C. Avoid freeze / thaw cycle.
バッファー	pH: 7.20 Preservative: 0.09% Sodium azide Constituent: PBS
精製度	Protein A purified
特記事項(精製)	ab91270 is affinity purified
ポリ/モノ	モノクローナル
クローン名	JM7A4
アイソタイプ	IgG2b

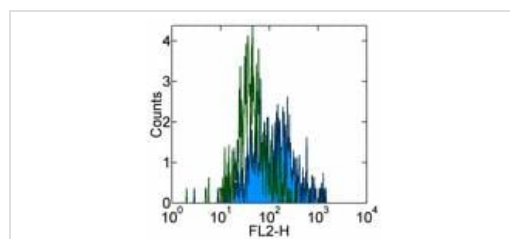
The Abpromise guarantee **Abpromise保証は、** 次のテスト済みアプリケーションにおけるab91270の使用に適用されません
 アプリケーションノートには、推奨の開始希釈率がありますが、適切な希釈率につきましてはご検討ください。

アプリケーション	Abreviews	特記事項
WB		Use at an assay dependent concentration.
IP		Use at an assay dependent concentration.
Flow Cyt		Use 0.5µg for 10 ⁶ cells. ab170192 - Mouse monoclonal IgG2b, is suitable for use as an isotype control with this antibody.

ターゲット情報

機能	Receptor for interleukin-15. Expression of different isoforms may alter or interfere with signal transduction. Isoform 5, isoform 6, isoform 7 and isoform 8 do not bind IL15. Signal transduction involves STAT3, STAT5, STAT6, JAK2 (By similarity) and SYK.
組織特異性	Isoform 1, isoform 3, isoform 4, isoform 5, isoform 6, isoform 7, isoform 8 and isoform 9 are widely expressed. Expressed in fetal brain with higher expression in the hippocampus and cerebellum than in cortex and thalamus. Higher levels of soluble sIL-15RA form in comparison with membrane-bound forms is present in all brain structures.
配列類似性	Contains 1 Sushi (CCP/SCR) domain.
翻訳後修飾	A soluble form (sIL-15RA) arises from proteolytic shedding of the membrane-anchored receptor. The cleavage involves ADAM17/TACE (By similarity). It also binds IL-15 and thus interferes with IL-15 binding to the membrane receptor. Phosphorylated by activated SYK. N-glycosylated and O-glycosylated.
細胞内局在	Secreted > extracellular space; Membrane. Nucleus membrane. Mainly found associated with the nuclear membrane and Endoplasmic reticulum membrane. Golgi apparatus membrane. Cytoplasmic vesicle membrane. Membrane. Isoform 5, isoform 6, isoform 7 and isoform 8 are associated with endoplasmic reticulum, Golgi and cytoplasmic vesicles, but not with the nuclear membrane.

画像



Flow Cytometry - Anti-IL-15RA antibody [JM7A4] (ab91270)

ab91270 staining IL-15RA in normal Human PBMCs by Flow cytometry.

Normal Human PBMCs were isolated, and cultured in standard conditions for 3 hours. Non adherent cells were removed from culture, and remaining cells were stimulated with LPS and IFN-γ for 24 hours.

Open/green histogram; stained with 0.25 µg of Purified Mouse IgG2b Isotype Control

Closed/blue histogram; stained with 0.25 µg of ab91270.

Detection utilised Biotin Anti-Mouse IgG and SA_v-PE.

Cells in the large scatter population were used for analysis.

Please note: All products are "FOR RESEARCH USE ONLY. NOT FOR USE IN DIAGNOSTIC PROCEDURES"

Our Abpromise to you: Quality guaranteed and expert technical support

- Replacement or refund for products not performing as stated on the datasheet
- Valid for 12 months from date of delivery
- Response to your inquiry within 24 hours

- We provide support in Chinese, English, French, German, Japanese and Spanish
- Extensive multi-media technical resources to help you
- We investigate all quality concerns to ensure our products perform to the highest standards

If the product does not perform as described on this datasheet, we will offer a refund or replacement. For full details of the Abpromise, please visit <https://www.abcam.co.jp/abpromise> or contact our technical team.

Terms and conditions

- Guarantee only valid for products bought direct from Abcam or one of our authorized distributors