






Anti-IL-15 antibody ab109082

1 References [画像数 2](#)

製品の概要

製品名	Anti-IL-15 antibody
製品の詳細	Rabbit polyclonal to IL-15
由来種	Rabbit
アプリケーション	適用あり: WB, IHC-P
種交差性	交差種: Human 交差が予測される動物種: Monkey 
免疫原	Recombinant fragment corresponding to Human IL-15 aa 1 to the C-terminus (C terminal).  Run BLAST with   Run BLAST with 
ポジティブ・コントロール	WB: Foetal liver IHC-P: Foetal skeletal muscle
特記事項	<p>The Life Science industry has been in the grips of a reproducibility crisis for a number of years. Abcam is leading the way in addressing this with our range of recombinant monoclonal antibodies and knockout edited cell lines for gold-standard validation. Please check that this product meets your needs before purchasing.</p> <p>If you have any questions, special requirements or concerns, please send us an inquiry and/or contact our Support team ahead of purchase. Recommended alternatives for this product can be found below, along with publications, customer reviews and Q&As</p>

製品の特性

製品の状態	Lyophilized:Reconstitute with 200ul distilled sterile water. Please note that if you receive this product in liquid form it has already been reconstituted as described and no further reconstitution is necessary.
保存方法	Shipped at 4°C. Store at +4°C short term (1-2 weeks). Upon delivery aliquot. Store at -20°C long term.
バッファー	Constituent: Water
精製度	Immunogen affinity purified
ポリ/モノ	ポリクローナル
アイソタイプ	IgG

アプリケーション

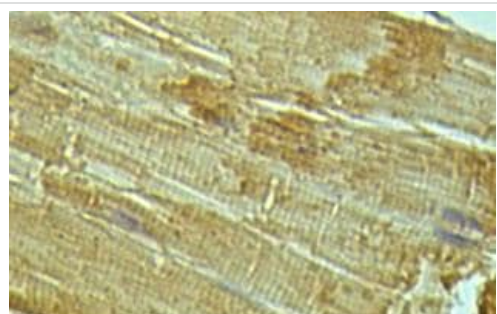
The Abpromise guarantee **Abpromise保証は、** 次のテスト済みアプリケーションにおけるab109082の使用に適用されます
 アプリケーションノートには、推奨の開始希釈率がありますが、適切な希釈率につきましてはご検討ください。

アプリケーション	Abreviews	特記事項
WB		1/500 - 1/1000. Detects a band of approximately 18 kDa.
IHC-P		1/100 - 1/500.

ターゲット情報

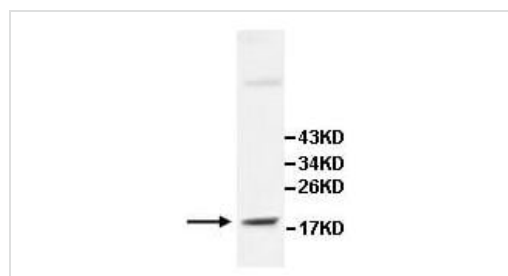
機能	Cytokine that stimulates the proliferation of T-lymphocytes. Stimulation by IL-15 requires interaction of IL-15 with components of IL-2R, including IL-2R beta and probably IL-2R gamma but not IL-2R alpha.
組織特異性	Most abundant in placenta and skeletal muscle. It is also detected in the heart, lung, liver and kidney. IL15-S21AA is preferentially expressed in tissues such as testis and thymus.
配列類似性	Belongs to the IL-15/IL-21 family.
細胞内局在	Secreted and Cytoplasm. Nucleus. IL15-S21AA is not secreted, but rather is stored intracellularly, appearing in the nucleus and cytoplasmic components.

画像



Immunohistochemistry (Formalin/PFA-fixed paraffin-embedded sections) - Anti-IL-15 antibody (ab109082)

Immunohistochemical staining of IL-15 in paraffin-embedded human foetal skeletal muscle tissue with ab109082 (1/100 dilution).



Western blot - Anti-IL-15 antibody (ab109082)

Anti-IL-15 antibody (ab109082) at 1/500 dilution + Foetal liver lysate

Please note: All products are "FOR RESEARCH USE ONLY. NOT FOR USE IN DIAGNOSTIC PROCEDURES"

Our Abpromise to you: Quality guaranteed and expert technical support

- Replacement or refund for products not performing as stated on the datasheet
- Valid for 12 months from date of delivery
- Response to your inquiry within 24 hours

- We provide support in Chinese, English, French, German, Japanese and Spanish
- Extensive multi-media technical resources to help you
- We investigate all quality concerns to ensure our products perform to the highest standards

If the product does not perform as described on this datasheet, we will offer a refund or replacement. For full details of the Abpromise, please visit <https://www.abcam.co.jp/abpromise> or contact our technical team.

Terms and conditions

- Guarantee only valid for products bought direct from Abcam or one of our authorized distributors