

Anti-IL-13 receptor alpha 1 antibody [GM1E7] ab39418

1 References [画像数 3](#)

製品の概要

製品名	Anti-IL-13 receptor alpha 1 antibody [GM1E7]
製品の詳細	Mouse monoclonal [GM1E7] to IL-13 receptor alpha 1
由来種	Mouse
特異性	The antibody recognises IL-13 Receptor 1 alpha transiently expressed on the cell surface of transfected BOSC cells as well as the native protein on monocytes.
アプリケーション	適用あり: Flow Cyt, ICC/IF
種交差性	交差種: Recombinant fragment
免疫原	Other Immunogen Type corresponding to Human IL-13 receptor alpha 1. Genetic immunization with cDNA encoding human IL13-Rα1 (extracellular domain) Database link: P78552
ポジティブ・コントロール	ICC/IF: CHO cells transiently transfected with an expression vector encoding IL13-R. Flow Cyt: IL13-R transfected BOSC23 cells.
特記事項	<p>The Life Science industry has been in the grips of a reproducibility crisis for a number of years. Abcam is leading the way in addressing this with our range of recombinant monoclonal antibodies and knockout edited cell lines for gold-standard validation. Please check that this product meets your needs before purchasing.</p> <p>If you have any questions, special requirements or concerns, please send us an inquiry and/or contact our Support team ahead of purchase. Recommended alternatives for this product can be found below, along with publications, customer reviews and Q&As</p>

製品の特性

製品の状態	Liquid
保存方法	Shipped at 4°C. Store at +4°C.
バッファー	Constituent: PBS
精製度	Protein G purified
ポリ/モノ	モノクローナル
クローン名	GM1E7
アイソタイプ	IgG1

アプリケーション

The Abpromise guarantee Abpromise保証は、 次のテスト済みアプリケーションにおけるab39418の使用に適用されます
アプリケーションノートには、推奨の開始希釈率がありますが、適切な希釈率につきましてはご検討ください。

アプリケーション	Abreviews	特記事項
Flow Cyt		
ICC/IF		

追加情報

Flow Cyt: Use 25µl of a 2.5 µg/ml concentration.

Not yet tested in other applications.

Optimal dilutions/concentrations should be determined by the end user.

ターゲット情報

機能

Binds with low affinity to interleukin-13 (IL13). Together with IL4RA can form a functional receptor for IL13. Also serves as an alternate accessory protein to the common cytokine receptor gamma chain for interleukin-4 (IL4) signaling, but cannot replace the function of IL2RG in allowing enhanced interleukin-2 (IL2) binding activity.

組織特異性

Ubiquitous. Highest levels in heart, liver, skeletal muscle and ovary; lowest levels in brain, lung and kidney. Also found in B-cells, T-cells and endothelial cells.

配列類似性

Belongs to the type I cytokine receptor family. Type 5 subfamily.

ドメイン

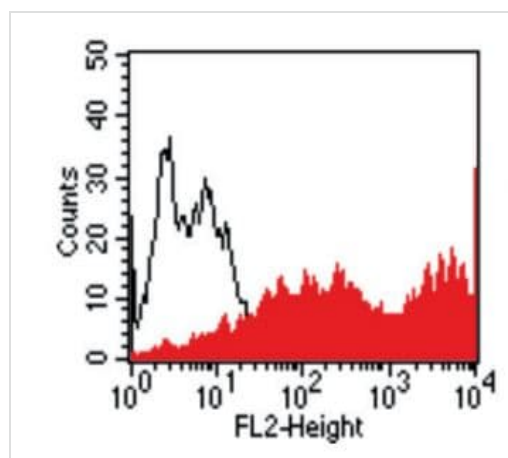
The WSXWS motif appears to be necessary for proper protein folding and thereby efficient intracellular transport and cell-surface receptor binding.

The box 1 motif is required for JAK interaction and/or activation.

細胞内局在

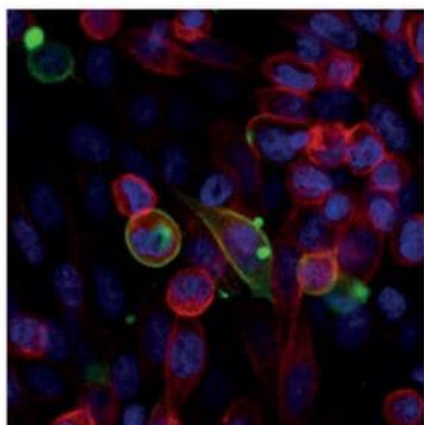
Membrane.

画像



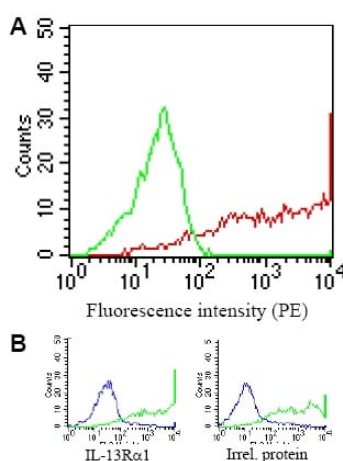
Flow Cytometry - Anti-IL-13 receptor alpha 1
antibody [GM1E7] (ab39418)

Flow cytometric analysis of BOSC23 cells using ab39418. BOSC23 cells were transiently transfected with an expression vector encoding either IL13-R (red curve) or an irrelevant protein (control transfectant: black curve). Binding of ab39418 was detected with a PE-conjugated secondary antibody. A positive signal was obtained only with IL13-R transfected cells.



Immunocytochemistry/ Immunofluorescence - Anti-IL-13 receptor alpha 1 antibody [GM1E7] (ab39418)

Immunofluorescence staining of CHO cells using ab39418 at $1 \mu\text{g}/10^6$ cells. CHO cells were transiently transfected with an expression vector encoding IL13-R. Binding of ab39418 was visualized with a FITC-conjugated secondary antibody (green). Actin filaments are labeled with Alexa Fluor-555 Phalloidin (red). Cell nuclei are stained with DAPI (blue).



Flow Cytometry - Anti-IL-13 receptor alpha 1 antibody [GM1E7] (ab39418)

Specificity testing of ab39418. BOSC cells were transiently transfected with an expression vector encoding either the extracellular domain of IL-13R α 1 or an irrelevant protein. Expression of the constructs was tested with an anti-tag monoclonal antibody (B, green curves), an irrelevant monoclonal antibody served as negative control (blue curves). For specificity testing (A), purified ab39418 was tested on both the IL-13R α 1 (red curve) and the irrelevant protein trans-fectants (green curve). A positive signal was obtained only with IL-13R α 1 transfected cells.

Please note: All products are "FOR RESEARCH USE ONLY. NOT FOR USE IN DIAGNOSTIC PROCEDURES"

Our Abpromise to you: Quality guaranteed and expert technical support

- Replacement or refund for products not performing as stated on the datasheet
- Valid for 12 months from date of delivery
- Response to your inquiry within 24 hours
- We provide support in Chinese, English, French, German, Japanese and Spanish
- Extensive multi-media technical resources to help you
- We investigate all quality concerns to ensure our products perform to the highest standards

If the product does not perform as described on this datasheet, we will offer a refund or replacement. For full details of the Abpromise, please visit <https://www.abcam.co.jp/abpromise> or contact our technical team.

Terms and conditions

- Guarantee only valid for products bought direct from Abcam or one of our authorized distributors