

Anti-IL-13 receptor alpha 1 antibody ab79277

★★★★★ [2 Abreviews](#) [17 References](#) [画像数 3](#)

製品の概要

製品名	Anti-IL-13 receptor alpha 1 antibody
製品の詳細	Rabbit polyclonal to IL-13 receptor alpha 1
由来種	Rabbit
アプリケーション	適用あり: WB, IHC-P, ICC/IF
種交差性	交差種: Mouse, Human
免疫原	Synthetic peptide corresponding to Human IL-13 receptor alpha 1 (phospho Y405). (D-I-Y-E-K) Database link: P78552

特記事項

The Life Science industry has been in the grips of a reproducibility crisis for a number of years. Abcam is leading the way in addressing this with our range of recombinant monoclonal antibodies and knockout edited cell lines for gold-standard validation. Please check that this product meets your needs before purchasing.

If you have any questions, special requirements or concerns, please send us an inquiry and/or contact our Support team ahead of purchase. Recommended alternatives for this product can be found below, along with publications, customer reviews and Q&As

製品の特性

製品の状態	Liquid
保存方法	Shipped at 4°C. Store at -20°C. Stable for 12 months at -20°C.
バッファー	pH: 7.40 Preservative: 0.02% Sodium azide Constituents: PBS, 50% Glycerol (glycerin, glycerine), 0.5% BSA
精製度	Without Mg ²⁺ and Ca ²⁺ Immunogen affinity purified
ポリモノ	ポリクローナル
アイソタイプ	IgG

アプリケーション

The Abpromise guarantee

Abpromise保証は、次のテスト済みアプリケーションにおけるab79277の使用に適用されます

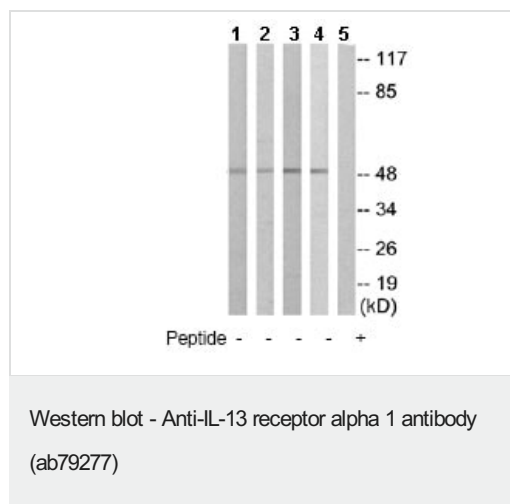
アプリケーションノートには、推奨の開始希釈率がありますが、適切な希釈率につきましてはご検討ください。

アプリケーション	Abreviews	特記事項
WB	★★★★☆ (1)	1/500 - 1/1000. Predicted molecular weight: 47 kDa.
IHC-P		1/50 - 1/100.
ICC/IF	★★★★★ (1)	1/500 - 1/1000.

ターゲット情報

機能	Binds with low affinity to interleukin-13 (IL13). Together with IL4RA can form a functional receptor for IL13. Also serves as an alternate accessory protein to the common cytokine receptor gamma chain for interleukin-4 (IL4) signaling, but cannot replace the function of IL2RG in allowing enhanced interleukin-2 (IL2) binding activity.
組織特異性	Ubiquitous. Highest levels in heart, liver, skeletal muscle and ovary; lowest levels in brain, lung and kidney. Also found in B-cells, T-cells and endothelial cells.
配列類似性	Belongs to the type I cytokine receptor family. Type 5 subfamily.
ドメイン	The WSXWS motif appears to be necessary for proper protein folding and thereby efficient intracellular transport and cell-surface receptor binding. The box 1 motif is required for JAK interaction and/or activation.
細胞内局在	Membrane.

画像



All lanes : Anti-IL-13 receptor alpha 1 antibody (ab79277) at 1/500 dilution

Lane 1 : COLO cell extracts

Lane 2 : HT29 cell extracts

Lane 3 : A549 cell extracts

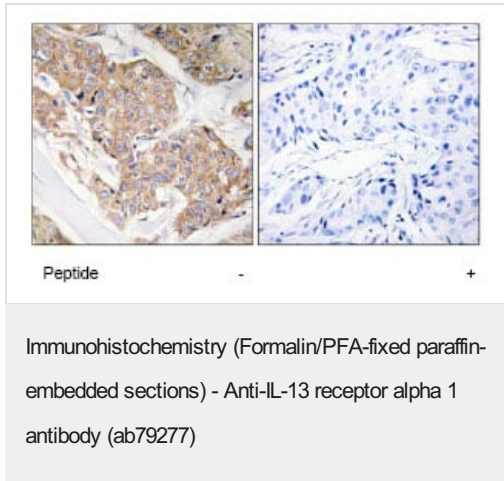
Lane 4 : 293 cell extracts

Lane 5 : COLO cell extracts with immunising peptide at 10 µg

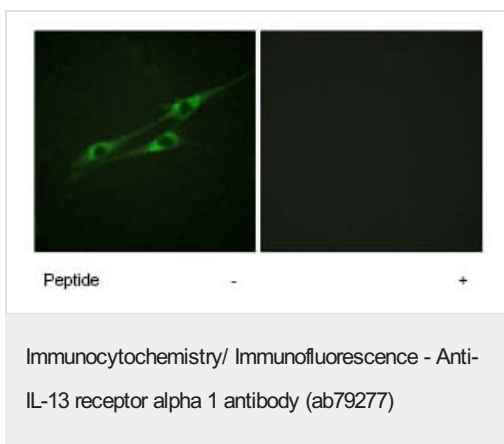
Lysates/proteins at 30 µg per lane.

Predicted band size: 47 kDa

Observed band size: 50 kDa



ab79277 at 1/50 dilution staining IL-13 receptor alpha 1 in human breast carcinoma by Immunohistochemistry using paraffin-embedded tissue, in the absence or presence of the immunising peptide.



ab79277 at 1/500 dilution staining IL-13 receptor alpha 1 in NIH3T3 cells by Immunofluorescence, in the absence or presence of the immunising peptide.

Please note: All products are "FOR RESEARCH USE ONLY. NOT FOR USE IN DIAGNOSTIC PROCEDURES"

Our Abpromise to you: Quality guaranteed and expert technical support

- Replacement or refund for products not performing as stated on the datasheet
- Valid for 12 months from date of delivery
- Response to your inquiry within 24 hours
- We provide support in Chinese, English, French, German, Japanese and Spanish
- Extensive multi-media technical resources to help you
- We investigate all quality concerns to ensure our products perform to the highest standards

If the product does not perform as described on this datasheet, we will offer a refund or replacement. For full details of the Abpromise, please visit <https://www.abcam.co.jp/abpromise> or contact our technical team.

Terms and conditions

- Guarantee only valid for products bought direct from Abcam or one of our authorized distributors