

Anti-IL-10 antibody ab34843

★★★★★ [15 Abreviews](#) [84 References](#) [画像数 2](#)

製品の概要

製品名	Anti-IL-10 antibody
製品の詳細	Rabbit polyclonal to IL-10
由来種	Rabbit
アプリケーション	適用あり: RIA, Neutralising, WB, ELISA
種交差性	交差種: Human, Recombinant fragment
免疫原	Full length native protein (purified) corresponding to Human IL-10.
特記事項	<p>The Life Science industry has been in the grips of a reproducibility crisis for a number of years. Abcam is leading the way in addressing this with our range of recombinant monoclonal antibodies and knockout edited cell lines for gold-standard validation. Please check that this product meets your needs before purchasing.</p> <p>If you have any questions, special requirements or concerns, please send us an inquiry and/or contact our Support team ahead of purchase. Recommended alternatives for this product can be found below, along with publications, customer reviews and Q&As</p>

製品の特性

製品の状態	Liquid
保存方法	Shipped at 4°C. Upon delivery aliquot and store at -20°C or -80°C. Avoid repeated freeze / thaw cycles.
バッファー	Preservative: 0.01% Sodium azide Constituent: Whole serum
精製度	Whole antiserum
ポリ/モノ	ポリクローナル
アイソタイプ	IgG

アプリケーション

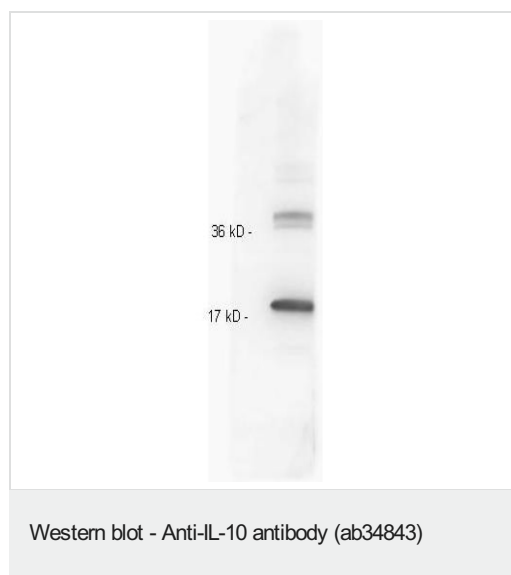
The Abpromise guarantee **Abpromise保証は、次のテスト済みアプリケーションにおけるab34843の使用に適用されます**
 アプリケーションノートには、推奨の開始希釈率がありますが、適切な希釈率につきましてはご検討ください。

アプリケーション	Abreviews	特記事項
RIA		Use at an assay dependent concentration.
Neutralising		Use at an assay dependent concentration.
WB	★★★★☆ (2)	1/2000 - 1/10000. Predicted molecular weight: 21 kDa. In Western blot analysis of natural cell products or human body fluids, multiple bands of IL-10 will appear due to the variable amount of glycosylation on the molecule.
ELISA		Use at an assay dependent concentration. (as detection antibody, using a monoclonal antibody for capture).

ターゲット情報

機能	Inhibits the synthesis of a number of cytokines, including IFN-gamma, IL-2, IL-3, TNF and GM-CSF produced by activated macrophages and by helper T-cells.
組織特異性	Produced by a variety of cell lines, including T-cells, macrophages, mast cells and other cell types.
配列類似性	Belongs to the IL-10 family.
細胞内局在	Secreted.

画像



Anti-IL-10 antibody (ab34843) at 1/200 dilution + recombinant IL-10 protein

Secondary

Goat anti-rabbit at 1/20000 dilution

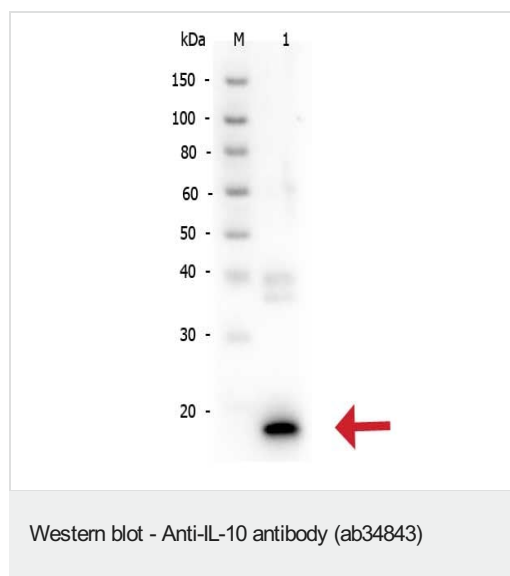
Predicted band size: 21 kDa

4-20% reducing gel.

Membrane was blocked in 3% BSA-TBS for 1 hour 4°C.

Dilution buffer: 3% BSA-TBS.

Incubated O/N at 4°C.



Anti-IL-10 antibody (ab34843) at 1/500 dilution + recombinant IL-10 protein, 50ng

Secondary

Peroxidase conjugated secondary at 1/40000 dilution

Predicted band size: 21 kDa

Please note: All products are "FOR RESEARCH USE ONLY. NOT FOR USE IN DIAGNOSTIC PROCEDURES"

Our Abpromise to you: Quality guaranteed and expert technical support

- Replacement or refund for products not performing as stated on the datasheet
- Valid for 12 months from date of delivery
- Response to your inquiry within 24 hours
- We provide support in Chinese, English, French, German, Japanese and Spanish
- Extensive multi-media technical resources to help you
- We investigate all quality concerns to ensure our products perform to the highest standards

If the product does not perform as described on this datasheet, we will offer a refund or replacement. For full details of the Abpromise, please visit <https://www.abcam.co.jp/abpromise> or contact our technical team.

Terms and conditions

- Guarantee only valid for products bought direct from Abcam or one of our authorized distributors