

Anti-IKKi/IKKe antibody [EPR4904] ab124766

リコンビナント RabMAb[®]

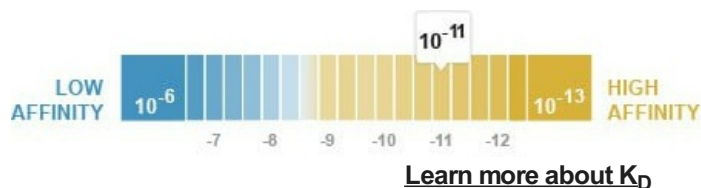
4 References [画像数 5](#)

製品の概要

製品名	Anti-IKKi/IKKe antibody [EPR4904]
製品の詳細	Rabbit monoclonal [EPR4904] to IKKi/IKKe
由来種	Rabbit
アプリケーション	適用あり: Flow Cyt (Intra), WB, IHC-P 適用なし: IP
種交差性	交差種: Human
免疫原	Synthetic peptide within Human IKKi/IKKe aa 1-100. The exact sequence is proprietary.
ポジティブ・コントロール	HeLa, Raji, MCF7 and Jurkat whole cell lysate (ab7899); Human tonsil tissue.
特記事項	This product is a recombinant monoclonal antibody, which offers several advantages including: <ul style="list-style-type: none"> - High batch-to-batch consistency and reproducibility - Improved sensitivity and specificity - Long-term security of supply - Animal-free production <p>For more information see here.</p> <p>Our RabMAb[®] technology is a patented hybridoma-based technology for making rabbit monoclonal antibodies. For details on our patents, please refer to RabMAb[®] patents.</p> <p>Mouse, Rat: We have preliminary internal testing data to indicate this antibody may not react with these species. Please contact us for more information.</p>

製品の特性

製品の状態	Liquid
保存方法	Shipped at 4°C. Store at -20°C. Stable for 12 months at -20°C.
解離定数 (K _D 値)	K _D = 5.52 x 10 ⁻¹¹ M



バッファー	pH: 7.20 Preservative: 0.05% Sodium azide Constituents: 0.1% BSA, 40% Glycerol (glycerin, glycerine), 9.85% Tris glycine, 50% Tissue culture supernatant
精製度	Protein A purified
ポリ/モノ	モノクローナル
クローン名	EPR4904
アイソタイプ	IgG

アプリケーション

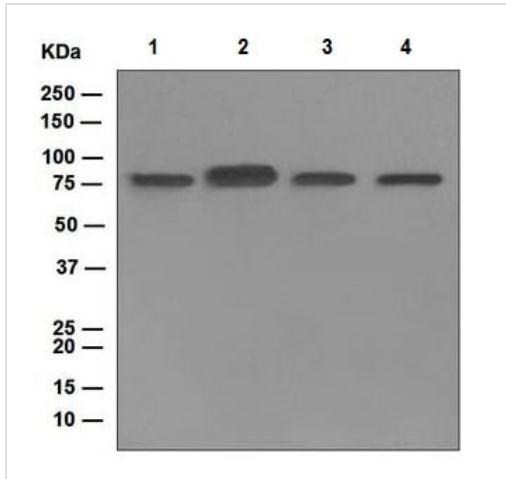
The Abpromise guarantee **Abpromise保証は、次のテスト済みアプリケーションにおけるab124766の使用に適用されず**
アプリケーションノートには、推奨の開始希釈率がありますが、適切な希釈率につきましてはご検討ください。

アプリケーション	Abreviews	特記事項
Flow Cyt (Intra)		1/1000. ab172730 - Rabbit monoclonal IgG, is suitable for use as an isotype control with this antibody.
WB		1/10000 - 1/50000. Detects a band of approximately 80 kDa (predicted molecular weight: 80 kDa).
IHC-P		1/100 - 1/250. Perform heat mediated antigen retrieval before commencing with IHC staining protocol. (Heat up to 98 degrees C, below boiling, and then let cool for 10-20 min).

追加情報 Is unsuitable for IP.

ターゲット情報

機能	Phosphorylates inhibitors of NF-kappa-B thus leading to the dissociation of the inhibitor/NF-kappa-B complex and ultimately the degradation of the inhibitor. May play a special role in the immune response. Protects cells against DNA damage-induced cell death.
組織特異性	Highly expressed in spleen followed by thymus, peripheral blood leukocytes, pancreas, placenta. Weakly expressed in lung, kidney, prostate, ovary and colon.
配列類似性	Belongs to the protein kinase superfamily. Ser/Thr protein kinase family. I-kappa-B kinase subfamily. Contains 1 protein kinase domain.
翻訳後修飾	Autophosphorylated. Sumoylation by TOPORS upon DNA damage is required for protection of cells against DNA damage-induced cell death. Desumoylated by SENP1.
細胞内局在	Cytoplasm. Nucleus. Nucleus > PML body. Targeting to PML nuclear bodies upon DNA damage is TOPORS-dependent.



Western blot - Anti-IKKi/IKKe antibody [EPR4904] (ab124766)

All lanes : Anti-IKKi/IKKe antibody [EPR4904] (ab124766) at 1/10000 dilution

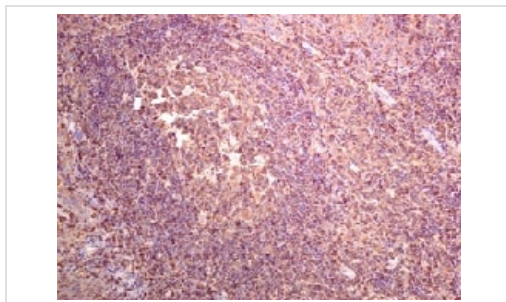
- Lane 1 :** HeLa cell lysate
- Lane 2 :** Raji cell lysate
- Lane 3 :** MCF7 cell lysate
- Lane 4 :** Jurkat cell lysate

Lysates/proteins at 10 µg per lane.

Secondary

All lanes : Goat anti-Rabbit HRP at 1/2000 dilution

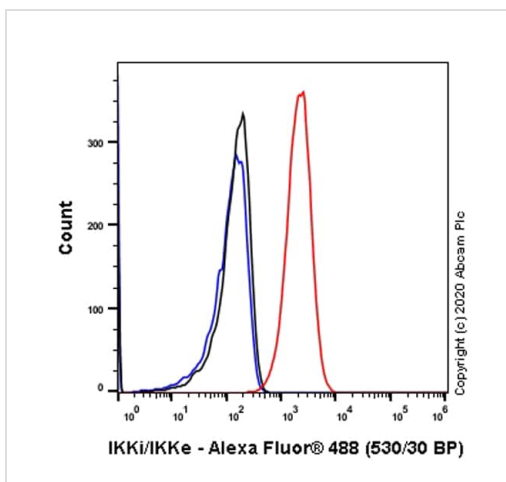
Predicted band size: 80 kDa



Immunohistochemistry (Formalin/PFA-fixed paraffin-embedded sections) - Anti-IKKi/IKKe antibody [EPR4904] (ab124766)

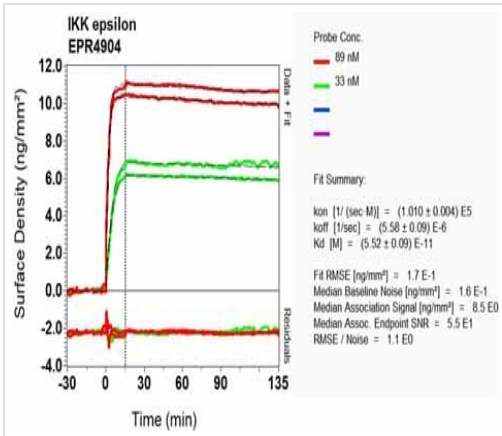
ab124766, at 1/100 dilution, staining IKKi/IKKe in paraffin-embedded Human tonsil tissue by Immunohistochemistry.

Perform heat mediated antigen retrieval before commencing with IHC staining protocol.



Flow Cytometry (Intracellular) - Anti-IKKi/IKKe antibody [EPR4904] (ab124766)

Flow Cytometry analysis of HeLa (Human cervix adenocarcinoma epithelial cell) cells labeling IKKi/IKKe with purified ab124766 at 1/1000 dilution (1 µg/mL) (Red). Cells were fixed with 4% Paraformaldehyde and permeabilised with 90% Methanol. A Goat anti rabbit IgG (Alexa Fluor® 488, [ab150077](#)) secondary antibody was used at 1/2000. Isotype control - Rabbit monoclonal IgG (Black). Unlabeled control - Cell without incubation with primary antibody and secondary antibody (Blue).



OI-RD Scanning - Anti-IKKi/IKKe antibody
[EPR4904] (ab124766)

Equilibrium dissociation constant (K_D)

Learn more about K_D

[Click here to learn more about \$K_D\$](#)

Why choose a recombinant antibody?

Research with confidence
Consistent and reproducible results

Long-term and scalable supply
Recombinant technology

Success from the first experiment
Confirmed specificity

Ethical standards compliant
Animal-free production

Anti-IKKi/IKKe antibody [EPR4904] (ab124766)

Please note: All products are "FOR RESEARCH USE ONLY. NOT FOR USE IN DIAGNOSTIC PROCEDURES"

Our Abpromise to you: Quality guaranteed and expert technical support

- Replacement or refund for products not performing as stated on the datasheet
- Valid for 12 months from date of delivery
- Response to your inquiry within 24 hours
- We provide support in Chinese, English, French, German, Japanese and Spanish
- Extensive multi-media technical resources to help you
- We investigate all quality concerns to ensure our products perform to the highest standards

If the product does not perform as described on this datasheet, we will offer a refund or replacement. For full details of the Abpromise, please visit <https://www.abcam.co.jp/abpromise> or contact our technical team.

Terms and conditions

- Guarantee only valid for products bought direct from Abcam or one of our authorized distributors