

Anti-IKB alpha (phospho Y42) antibody ab24783

19 References [画像数 1](#)

製品の概要

製品名	Anti-IKB alpha (phospho Y42) antibody
製品の詳細	Rabbit polyclonal to IKB alpha (phospho Y42)
由来種	Rabbit
特異性	There may be some homology to unrelated proteins with a conserved tyrosine phosphorylation motif. It is recommended that this antibody be used after immunoprecipitation with an IKB alpha specific antibody.
アプリケーション	適用あり: WB
種交差性	交差種: Human
免疫原	Synthetic peptide corresponding to Human IKB alpha (phospho Y42) conjugated to keyhole limpet haemocyanin.
特記事項	<p>We do not have concentration information for this antibody. It is optimized to work at the dilutions stated on the datasheet.</p> <p>Useful in detection of phosphorylated IKB alpha (Tyr-42).</p> <p>The Life Science industry has been in the grips of a reproducibility crisis for a number of years. Abcam is leading the way in addressing this with our range of recombinant monoclonal antibodies and knockout edited cell lines for gold-standard validation. Please check that this product meets your needs before purchasing.</p> <p>If you have any questions, special requirements or concerns, please send us an inquiry and/or contact our Support team ahead of purchase. Recommended alternatives for this product can be found below, along with publications, customer reviews and Q&As</p>

製品の特性

製品の状態	Liquid
保存方法	Shipped at 4°C. Upon delivery aliquot and store at -20°C. Avoid freeze / thaw cycles.
バッファー	Preservative: 0.05% Sodium azide Constituents: PBS, 50% Glycerol, 0.1% BSA
精製度	Immunogen affinity purified
特記事項 (精製)	Cross absorbed to phospho-tyrosine coupled to agarose then affinity purified using phospho-IKB alpha (Tyr-42) peptide, without carrier.

一次抗体 備考	Useful in detection of phosphorylated IKB alpha (Tyr-42).
ポリ/モノ	ポリクローナル
アイソタイプ	IgG

アプリケーション

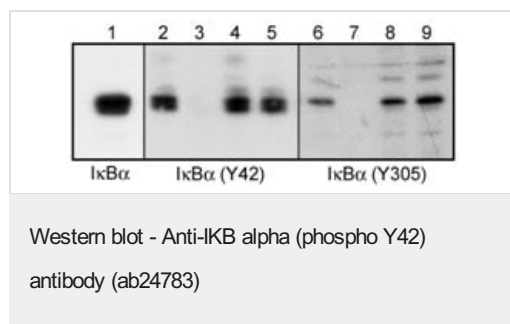
The Abpromise guarantee **Abpromise保証は、次のテスト済みアプリケーションにおけるab24783の使用に適用されます**
 アプリケーションノートには、推奨の開始希釈率がありますが、適切な希釈率につきましてはご検討ください。

アプリケーション	Abreviews	特記事項
WB		1/1000. Detects a band of approximately 38 kDa (predicted molecular weight: 36 kDa).

ターゲット情報

機能	Inhibits the activity of dimeric NF-kappa-B/REL complexes by trapping REL dimers in the cytoplasm through masking of their nuclear localization signals. On cellular stimulation by immune and proinflammatory responses, becomes phosphorylated promoting ubiquitination and degradation, enabling the dimeric RELA to translocate to the nucleus and activate transcription.
関連疾患	Ectodermal dysplasia, anhidrotic, with T-cell immunodeficiency autosomal dominant
配列類似性	Belongs to the NF-kappa-B inhibitor family. Contains 5 ANK repeats.
翻訳後修飾	Phosphorylated; disables inhibition of NF-kappa-B DNA-binding activity. Phosphorylation at positions 32 and 36 is prerequisite to recognition by UBE2D3 leading to polyubiquitination and subsequent degradation. Sumoylated; sumoylation requires the presence of the nuclear import signal. Sumoylation blocks ubiquitination and proteasome-mediated degradation of the protein thereby increasing the protein stability. Monoubiquitinated at Lys-21 and/or Lys-22 by UBE2D3. Ubiquitin chain elongation is then performed by CDC34 in cooperation with the SCF(FBXW11) E3 ligase complex, building ubiquitin chains from the UBE2D3-primed NFKBIA-linked ubiquitin. The resulting polyubiquitination leads to protein degradation. Also ubiquitinated by SCF(BTRC) following stimulus-dependent phosphorylation at Ser-32 and Ser-36. Deubiquitinated by porcine reproductive and respiratory syndrome virus Nsp2 protein, which thereby interferes with NFKBIA degradation and impairs subsequent NF-kappa-B activation.
細胞内局在	Cytoplasm. Nucleus. Shuttles between the nucleus and the cytoplasm by a nuclear localization signal (NLS) and a CRM1-dependent nuclear export.

画像



Western blot analysis of A431 cells treated with pervanadate (1 mM) for 30 minutes (30 ug/lane). Blots were probed with anti-IkappaBalpa (lane 1), anti-phospho-IkappaBalpa (Tyr-42) (ab24783; lanes 2-5), or anti-phospho-IkappaBalpa (Tyr-305) (**ab24784**; lanes 6-9). Both anti-phospho-IkappaBalpa (Tyr-42) and anti-phospho-IkappaBalpa (Tyr-305) were used in the presence of no blocking peptide (lane 2 & 6), phospho-IkappaBalpa (Tyr-42) peptide (lane 3 & 8), phospho-IkappaBalpa (Tyr-305) peptide (lane 4 & 7), or BSA conjugated to phospho-tyrosine (lane 5 & 9). Peptides and BSA-pTyr were used at 1 ug/ml.

Please note: All products are "FOR RESEARCH USE ONLY. NOT FOR USE IN DIAGNOSTIC PROCEDURES"

Our Abpromise to you: Quality guaranteed and expert technical support

- Replacement or refund for products not performing as stated on the datasheet
- Valid for 12 months from date of delivery
- Response to your inquiry within 24 hours
- We provide support in Chinese, English, French, German, Japanese and Spanish
- Extensive multi-media technical resources to help you
- We investigate all quality concerns to ensure our products perform to the highest standards

If the product does not perform as described on this datasheet, we will offer a refund or replacement. For full details of the Abpromise, please visit <https://www.abcam.co.jp/abpromise> or contact our technical team.

Terms and conditions

- Guarantee only valid for products bought direct from Abcam or one of our authorized distributors