


Anti-IGFBP3 antibody ab77635

★★★★★ [1 Abreviews](#) [6 References](#) [画像数 1](#)

製品の概要

製品名	Anti-IGFBP3 antibody
製品の詳細	Goat polyclonal to IGFBP3
由来種	Goat
特異性	ab77635 is expected to recognize both reported isoforms (NP_001013416.1 and NP_000589.2).
アプリケーション	適用あり: WB
種交差性	交差種: Human 交差が予測される動物種: Mouse, Rat, Horse, Cow, Dog 
免疫原	Synthetic peptide: C-RYKVDYESQSTDTQN , from the internal region of human IGFBP3 (NP_001013416.1; NP_000589.2). Run BLAST with Run BLAST with
特記事項	<p>The Life Science industry has been in the grips of a reproducibility crisis for a number of years. Abcam is leading the way in addressing this with our range of recombinant monoclonal antibodies and knockout edited cell lines for gold-standard validation. Please check that this product meets your needs before purchasing.</p> <p>If you have any questions, special requirements or concerns, please send us an inquiry and/or contact our Support team ahead of purchase. Recommended alternatives for this product can be found below, along with publications, customer reviews and Q&As</p>

製品の特性

製品の状態	Liquid
保存方法	Shipped at 4°C. Upon delivery aliquot and store at -20°C. Avoid freeze / thaw cycles.
バッファー	pH: 7.30 Preservative: 0.02% Sodium azide Constituents: 0.5% BSA, 0.5% Tris buffered saline
精製度	Immunogen affinity purified
特記事項(精製)	ab77635 is purified from goat serum by ammonium sulphate precipitation followed by antigen affinity chromatography using the immunising peptide.

ポリ/モノ
アイソタイプ

ポリクローナル
IgG

アプリケーション

The Abpromise guarantee Abpromise保証は、次のテスト済みアプリケーションにおけるab77635の使用に適用されます
アプリケーションノートには、推奨の開始希釈率がありますが、適切な希釈率につきましてはご確認ください。

アプリケーション	Abreviews	特記事項
WB	★★★★★ (1)	

追加情報

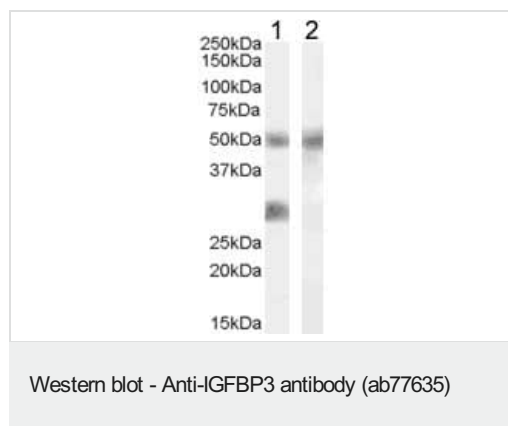
Peptide ELISA: Use at an assay dependent dilution. Antibody detection limit dilution 1/64000.
WB: Use at a concentration of 0.02 - 0.06 µg/ml. Predicted molecular weight: 32 kDa.

Not yet tested in other applications.
Optimal dilutions/concentrations should be determined by the end user.

ターゲット情報

機能	IGF-binding proteins prolong the half-life of the IGFs and have been shown to either inhibit or stimulate the growth promoting effects of the IGFs on cell culture. They alter the interaction of IGFs with their cell surface receptors.
組織特異性	Expressed by most tissues. Present in plasma.
配列類似性	Contains 1 IGFBP N-terminal domain. Contains 1 thyroglobulin type-1 domain.
発生段階	IGFBP3 levels are higher during extrauterine life and peak during puberty.
ドメイン	The thyroglobulin type-1 domain mediates interaction with HN.
翻訳後修飾	Phosphorylation sites are present in the extracellular medium.
細胞内局在	Secreted.

画像



All lanes : Anti-IGFBP3 antibody (ab77635) at 0.02 µg/ml

Lane 1 : human breast cancer lysate (in RIPA buffer)

Lane 2 : human breast cancer lysate (in RIPA buffer) with immunizing peptide

Lysates/proteins at 35 µg per lane.

Predicted band size: 32 kDa

Observed band size: 28 kDa

Additional bands at: 50 kDa (possible non-specific binding)

The additional band of 50 kDa was consistently observed. However this band was not blocked by the immunizing peptide and it is therefore a non specific signal.

Please note: All products are "FOR RESEARCH USE ONLY. NOT FOR USE IN DIAGNOSTIC PROCEDURES"

Our Abpromise to you: Quality guaranteed and expert technical support

- Replacement or refund for products not performing as stated on the datasheet
- Valid for 12 months from date of delivery
- Response to your inquiry within 24 hours
- We provide support in Chinese, English, French, German, Japanese and Spanish
- Extensive multi-media technical resources to help you
- We investigate all quality concerns to ensure our products perform to the highest standards

If the product does not perform as described on this datasheet, we will offer a refund or replacement. For full details of the Abpromise, please visit <https://www.abcam.co.jp/abpromise> or contact our technical team.

Terms and conditions

- Guarantee only valid for products bought direct from Abcam or one of our authorized distributors