

Anti-IGF2 antibody ab9574

★★★★☆ **20 Abreviews** **105 References** 画像数 2

製品の概要

製品名	Anti-IGF2 antibody
製品の詳細	Rabbit polyclonal to IGF2
由来種	Rabbit
アプリケーション	適用あり: WB, Sandwich ELISA
種交差性	交差種: Recombinant fragment
免疫原	Recombinant full length protein corresponding to Human IGF2. Highly pure (>98%) recombinant hIGF-2 (human Insulin Like Growth Factor-2). Database link: P01344
特記事項	<p>Although some customers have been successful in IHC we no longer batch test in this application.</p> <p>Insulin Like Growth Factor-2 (IGF-2) is a polypeptide growth factor, which stimulates the proliferation of a wide range of cell types</p> <p>The Life Science industry has been in the grips of a reproducibility crisis for a number of years. Abcam is leading the way in addressing this with our range of recombinant monoclonal antibodies and knockout edited cell lines for gold-standard validation. Please check that this product meets your needs before purchasing.</p> <p>If you have any questions, special requirements or concerns, please send us an inquiry and/or contact our Support team ahead of purchase. Recommended alternatives for this product can be found below, along with publications, customer reviews and Q&As</p>

製品の特性

製品の状態	Lyophilized:Reconstitute with 200µl of sterile water. The reconstituted antibody is stable for at least 2 weeks at 2-8C and at least 6 months at -20C
保存方法	Shipped at 4°C. Store at -20°C.
精製度	Immunogen affinity purified
一次抗体 備考	Insulin Like Growth Factor-2 (IGF-2) is a polypeptide growth factor, which stimulates the proliferation of a wide range of cell types
ポリ/モノ	ポリクローナル
アイソタイプ	IgG

アプリケーション

The Abpromise guarantee

Abpromise保証は、次のテスト済みアプリケーションにおけるab9574の使用に適用されます

アプリケーションノートには、推奨の開始希釈率がありますが、適切な希釈率につきましてはご検討ください。

アプリケーション	Abreviews	特記事項
WB	★★★★☆ (6)	Use at an assay dependent concentration. To detect hIGF-2 by Western Blot analysis this antibody can be used at a concentration of 0.1 - 0.2 µg/ml. Used in conjunction with compatible secondary reagents the detection limit for recombinant hIGF-2 is 1.5 - 3.0 ng/lane, under either reducing or non-reducing conditions.
Sandwich ELISA		Use at an assay dependent concentration. To detect hIGF-II by sandwich ELISA (using 100 µl/well antibody solution) a concentration of 0.5 - 2.0 µg/ml of this antibody is required. This antigen affinity purified antibody, in conjunction with ab83142 , allows the detection of at least 0.2 - 0.4 ng/well of recombinant hIGF-II.

ターゲット情報

機能

The insulin-like growth factors possess growth-promoting activity. In vitro, they are potent mitogens for cultured cells. IGF-II is influenced by placental lactogen and may play a role in fetal development.

Preptin undergoes glucose-mediated co-secretion with insulin, and acts as physiological amplifier of glucose-mediated insulin secretion. Exhibits osteogenic properties by increasing osteoblast mitogenic activity through phosphoactivation of MAPK1 and MAPK3.

関連疾患

Epigenetic changes of DNA hypomethylation in IGF2 are a cause of Silver-Russell syndrome (SIRS) [MIM:180860]. SIRS is a clinically heterogeneous condition characterized by severe intrauterine growth retardation, poor postnatal growth, craniofacial features such as a triangular shaped face and a broad forehead, body asymmetry, and a variety of minor malformations.

配列類似性

Belongs to the insulin family.

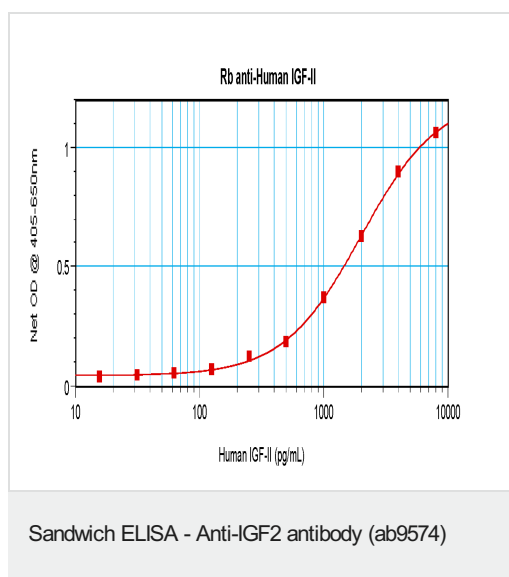
翻訳後修飾

O-glycosylated with a core 1 or possibly core 8 glycan.

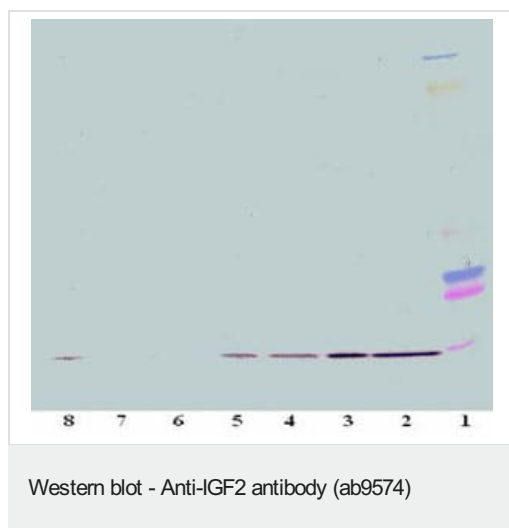
細胞内局在

Secreted.

画像



ab9574 detecting IGF2 using sandwich ELISA



Rabbit Anti-Human IGF-II against Human IGF-II. Antibody concentration: 0.10 ug/ml Lower limit of detection: 3.91 ng/lane

Molecular Weight: 7.5 kDa

Lane 1: Marker

Lane 2: 250 ng

Lane 3: 125 ng

Lane 4: 62.5 ng

Lane 5: 31.25 ng

Lane 6: 15.625 ng

Lane 7: 7.8 ng

Lane 8: 3.9 ng

Please note: All products are "FOR RESEARCH USE ONLY. NOT FOR USE IN DIAGNOSTIC PROCEDURES"

Our Abpromise to you: Quality guaranteed and expert technical support

- Replacement or refund for products not performing as stated on the datasheet
- Valid for 12 months from date of delivery
- Response to your inquiry within 24 hours
- We provide support in Chinese, English, French, German, Japanese and Spanish
- Extensive multi-media technical resources to help you
- We investigate all quality concerns to ensure our products perform to the highest standards

If the product does not perform as described on this datasheet, we will offer a refund or replacement. For full details of the Abpromise, please visit <https://www.abcam.co.jp/abpromise> or contact our technical team.

Terms and conditions

- Guarantee only valid for products bought direct from Abcam or one of our authorized distributors