




Anti-IGF1 antibody ab106836

★★★★★ **3 Abreviews** **12 References** 画像数 2

製品の概要

製品名	Anti-IGF1 antibody
製品の詳細	Goat polyclonal to IGF1
由来種	Goat
アプリケーション	適用あり: WB, ICC, IHC-P
種交差性	交差種: Human 交差が予測される動物種: Mouse, Rat, Rabbit, Horse, Chicken, Cow, Dog, Pig 
免疫原	Peptide with sequence C-RSVRAQRHTD , from the internal region of human IGF1 sequence according to NP_001104753.1; NP_001104754.1; NP_001104755.1; NP_000609.1.  Run BLAST with  Run BLAST with
ポジティブ・コントロール	ICC: Human HEK-293 cells; WB: Human uterus tissue lysate; IHC-P: Human spleen tissue.
特記事項	<p>The Life Science industry has been in the grips of a reproducibility crisis for a number of years. Abcam is leading the way in addressing this with our range of recombinant monoclonal antibodies and knockout edited cell lines for gold-standard validation. Please check that this product meets your needs before purchasing.</p> <p>If you have any questions, special requirements or concerns, please send us an inquiry and/or contact our Support team ahead of purchase. Recommended alternatives for this product can be found below, along with publications, customer reviews and Q&As</p>

製品の特性

製品の状態	Liquid
保存方法	Shipped at 4°C. Upon delivery aliquot and store at -20°C. Avoid freeze / thaw cycles.
バッファー	pH: 7.30 Preservative: 0.02% Sodium azide Constituents: Tris buffered saline, 0.5% BSA
精製度	Immunogen affinity purified
特記事項(精製)	Purified from goat serum by ammonium sulphate precipitation followed by antigen affinity chromatography using the immunizing peptide.

ポリ/モノ
アイソタイプ

ポリクローナル
IgG

アプリケーション

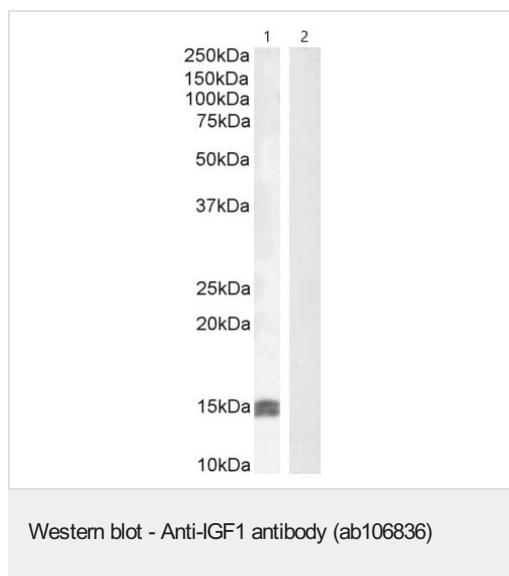
The Abpromise guarantee Abpromise保証は、 次のテスト済みアプリケーションにおけるab106836の使用に適用されます
アプリケーションノートには、推奨の開始希釈率がありますが、適切な希釈率につきましてはご検討ください。

アプリケーション	Abreviews	特記事項
WB	★★★★★ (2)	Use a concentration of 0.5 - 2 µg/ml. Detects a band of approximately 15 kDa (predicted molecular weight: 22 kDa). 1 hour primary incubation is recommended for this product.
ICC		Use a concentration of 10 µg/ml.
IHC-P		Use a concentration of 3.75 µg/ml. Perform heat mediated antigen retrieval with citrate buffer pH 6 before commencing with IHC staining protocol.

ターゲット情報

機能	The insulin-like growth factors, isolated from plasma, are structurally and functionally related to insulin but have a much higher growth-promoting activity. May be a physiological regulator of [1-14C]-2-deoxy-D-glucose (2DG) transport and glycogen synthesis in osteoblasts. Stimulates glucose transport in rat bone-derived osteoblastic (PyMS) cells and is effective at much lower concentrations than insulin, not only regarding glycogen and DNA synthesis but also with regard to enhancing glucose uptake.
関連疾患	Defects in IGF1 are the cause of insulin-like growth factor I deficiency (IGF1 deficiency) [MIM:608747]. IGF1 deficiency is an autosomal recessive disorder characterized by growth retardation, sensorineural deafness and mental retardation.
配列類似性	Belongs to the insulin family.
細胞内局在	Secreted.
製品の状態	There are 2 isoforms produced by alternative splicing. Isoform 1 also known as: IGF-IB; Isoform 2 also known as: IGF-IA.

画像



All lanes : Anti-IGF1 antibody (ab106836) at 0.5 µg/ml

Lane 1 : Human uterus tissue lysate in RIPA buffer

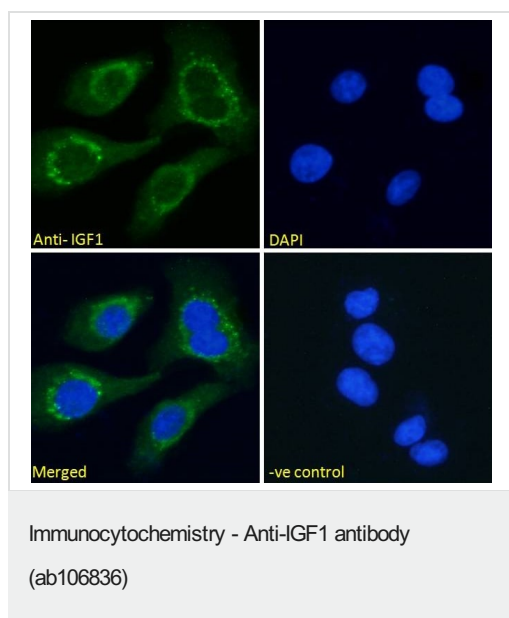
Lane 2 : HepG2 (human liver hepatocellular carcinoma cell line) whole cell lysate in RIPA buffer

Lysates/proteins at 35 µg per lane.

Predicted band size: 22 kDa

Observed band size: 15 kDa

Primary incubation for 1 hour at room temperature. Detected by chemiluminescence.



Immunocytochemistry analysis of paraformaldehyde fixed HEK-293 (human epithelial cell line from embryonic kidney) cells, permeabilized with 0.15% Triton. Primary incubation for 1 hour at 10 µg/mL followed by Alexa Fluor® 488 secondary antibody at 2 µg/mL. The nuclear stain is DAPI (blue).

Negative control: Unimmunized goat IgG (10 µg/mL) followed by Alexa Fluor® 488 secondary antibody (2 µg/mL).

Please note: All products are "FOR RESEARCH USE ONLY. NOT FOR USE IN DIAGNOSTIC PROCEDURES"

Our Abpromise to you: Quality guaranteed and expert technical support

- Replacement or refund for products not performing as stated on the datasheet

- Valid for 12 months from date of delivery
- Response to your inquiry within 24 hours
- We provide support in Chinese, English, French, German, Japanese and Spanish
- Extensive multi-media technical resources to help you
- We investigate all quality concerns to ensure our products perform to the highest standards

If the product does not perform as described on this datasheet, we will offer a refund or replacement. For full details of the Abpromise, please visit <https://www.abcam.co.jp/abpromise> or contact our technical team.

Terms and conditions

- Guarantee only valid for products bought direct from Abcam or one of our authorized distributors