

### Anti-IgE antibody, prediluted ab75673

★★★★★ [1 Abreviews](#) [7 References](#) [画像数 1](#)

#### 製品の概要

製品名	Anti-IgE antibody, prediluted
製品の詳細	Rabbit polyclonal to IgE, prediluted
由来種	Rabbit
特異性	This antibody recognizes IgE, epsilon heavy chain of human immunoglobulins. It does not cross-react with alpha (IgA), gamma (IgG), mu (IgM), or delta (IgD), heavy chains, T-cells, monocytes, granulocytes, or erythrocytes.
アプリケーション	<b>適用あり:</b> IHC-P
種交差性	<b>交差種:</b> Human
免疫原	Full length IgE isolated from a pool of normal human sera.
ポジティブ・コントロール	Human Tonsil tissue
特記事項	<p>This antibody is useful in the identification of leukemias, plasmacytomas and certain non-Hodgkin's lymphomas.</p> <p>The Life Science industry has been in the grips of a reproducibility crisis for a number of years. Abcam is leading the way in addressing this with our range of recombinant monoclonal antibodies and knockout edited cell lines for gold-standard validation. Please check that this product meets your needs before purchasing.</p> <p>If you have any questions, special requirements or concerns, please send us an inquiry and/or contact our Support team ahead of purchase. Recommended alternatives for this product can be found below, along with publications, customer reviews and Q&amp;As</p>

#### 製品の特性

製品の状態	Liquid
保存方法	Shipped at 4°C. Store at +4°C.
バッファー	<p>pH: 7.60</p> <p>Preservative: 0.0975% Sodium azide</p> <p>Constituent: 0.79% Tris HCl</p>
精製度	<p>Containing antibody stabilizer</p> <p>Protein A purified</p>

## 一次抗体 備考

This antibody is useful in the identification of leukemias, plasmacytomas and certain non-Hodgkin's lymphomas.

## ポリ/モノ

ポリクローナル

## アイソタイプ

IgG

## アプリケーション

### The Abpromise guarantee

**Abpromise保証は、次のテスト済みアプリケーションにおけるab75673の使用に適用されます**

アプリケーションノートには、推奨の開始希釈率がありますが、適切な希釈率につきましてはご検討ください。

アプリケーション	Abreviews	特記事項
IHC-P	★★★★★ (1)	1/1. Perform heat mediated antigen retrieval before commencing with IHC staining protocol. Ready to use.

## ターゲット情報

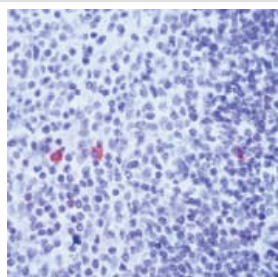
### 関連性

IgE is the class of antibodies produced in the lungs, skin, and mucous membranes. It may protect against parasite invasion, but it is a major factor in allergic reactions. The antigen-specific IgE interacts with mast cells and eosinophils, triggers the release of histamine, leukotrienes and other substances that lead to the itching, sneezing and congestion of allergies - and the life threatening respiratory distress of asthma and anaphylactic shock.

### 細胞内局在

Cell Membrane

## 画像



Formalin-fixed, paraffin-embedded human tonsil stained with ab75673, using peroxidase-conjugate and AEC chromogen. Note cytoplasmic staining of IgE-secreting cells.

Immunohistochemistry (Formalin/PFA-fixed paraffin-embedded sections) - Anti-IgE antibody, prediluted (ab75673)

**Please note:** All products are "FOR RESEARCH USE ONLY. NOT FOR USE IN DIAGNOSTIC PROCEDURES"

## Our Abpromise to you: Quality guaranteed and expert technical support

- Replacement or refund for products not performing as stated on the datasheet

- Valid for 12 months from date of delivery
- Response to your inquiry within 24 hours
- We provide support in Chinese, English, French, German, Japanese and Spanish
- Extensive multi-media technical resources to help you
- We investigate all quality concerns to ensure our products perform to the highest standards

If the product does not perform as described on this datasheet, we will offer a refund or replacement. For full details of the Abpromise, please visit <https://www.abcam.co.jp/abpromise> or contact our technical team.

#### **Terms and conditions**

---

- Guarantee only valid for products bought direct from Abcam or one of our authorized distributors