


Anti-IGBP1 antibody ab70545

★★★★★ [1 Abreviews](#) [1 References](#) [画像数 2](#)

製品の概要

製品名	Anti-IGBP1 antibody
製品の詳細	Rabbit polyclonal to IGBP1
由来種	Rabbit
アプリケーション	適用あり: WB, IP
種交差性	交差種: Mouse, Human 交差が予測される動物種: Rat, Rabbit, Horse, Chicken, Guinea pig, Cow, Dog, Turkey, Pig, Chimpanzee, Rhesus monkey, Gorilla, Orangutan 
免疫原	Synthetic peptide from a region between residue 300 and the C-terminus (residue 339) of human IGBP1 using the numbering given in SwissProt entry P78318
ポジティブ・コントロール	Whole cell lysate from Ramos, K562 and NIH3T3 cells.
特記事項	<p>The Life Science industry has been in the grips of a reproducibility crisis for a number of years. Abcam is leading the way in addressing this with our range of recombinant monoclonal antibodies and knockout edited cell lines for gold-standard validation. Please check that this product meets your needs before purchasing.</p> <p>If you have any questions, special requirements or concerns, please send us an inquiry and/or contact our Support team ahead of purchase. Recommended alternatives for this product can be found below, along with publications, customer reviews and Q&As</p>

製品の特性

製品の状態	Liquid
保存方法	Shipped at 4°C. Upon delivery aliquot and store at -20°C. Avoid freeze / thaw cycles.
バッファー	<p>pH: 7</p> <p>Preservative: 0.09% Sodium azide</p> <p>Constituents: 1.815% Tris, 1.764% Sodium citrate, 0.021% PBS</p>
精製度	Immunogen affinity purified
ポリ/モノ	ポリクローナル
アイソタイプ	IgG

アプリケーション

The Abpromise guarantee

Abpromise保証は、次のテスト済みアプリケーションにおけるab70545の使用に適用されます

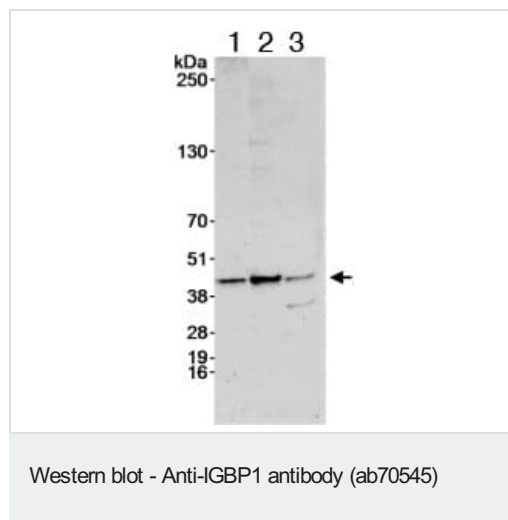
アプリケーションノートには、推奨の開始希釈率がありますが、適切な希釈率につきましてはご検討ください。

アプリケーション	Abreviews	特記事項
WB	★★★★★ (1)	1/1000 - 1/10000. Detects a band of approximately 39 kDa (predicted molecular weight: 39 kDa).
IP		Use at 2-5 µg/mg of lysate.

ターゲット情報

機能	Associated to surface IgM-receptor; may be involved in signal transduction. May be involved in regulation of the catalytic activity of type 2A-related serine/threonine phosphatases.
組織特異性	Ubiquitously expressed with highest levels in heart, skeletal muscle and pancreas.
関連疾患	Defects in IGBP1 are the cause of agenesis of the corpus callosum with mental retardation-ocular coloboma-micrognathia (ACCMRCM) [MIM:300472].
配列類似性	Belongs to the IGBP1/TAP42 family.
翻訳後修飾	Phosphorylated.
細胞内局在	Cytoplasm.

画像



All lanes : Anti-IGBP1 antibody (ab70545) at 0.4 µg/ml

Lane 1 : Whole cell lysate from Ramos cells

Lane 2 : Whole cell lysate from K562 cells

Lane 3 : Whole cell lysate from NIH3T3 cells

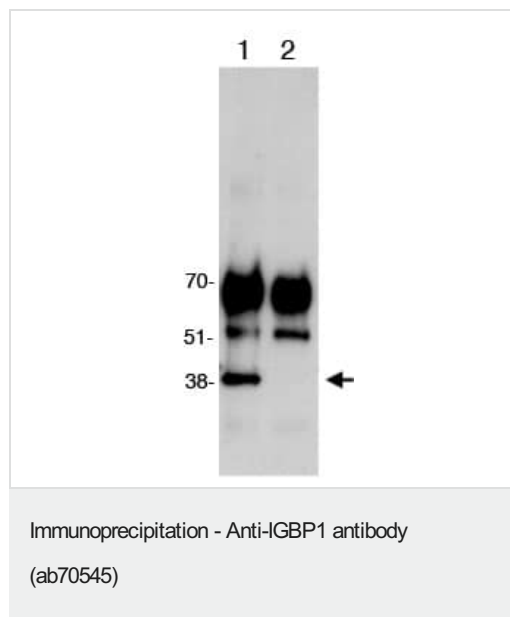
Lysates/proteins at 50 µg per lane.

Developed using the ECL technique.

Predicted band size: 39 kDa

Observed band size: 42 kDa

Exposure time: 30 seconds



1mg whole cell lysate from Ramos cells was immunoprecipitated with ab70545 at 3ug/mg of lysate (lane 1) or a control rabbit Ig (lane 2). For the subsequent blot 25% of the immunoprecipitate was loaded per lane, and probed with ab70545 at 1ug/ml.

Please note: All products are "FOR RESEARCH USE ONLY. NOT FOR USE IN DIAGNOSTIC PROCEDURES"

Our Abpromise to you: Quality guaranteed and expert technical support

- Replacement or refund for products not performing as stated on the datasheet
- Valid for 12 months from date of delivery
- Response to your inquiry within 24 hours
- We provide support in Chinese, English, French, German, Japanese and Spanish
- Extensive multi-media technical resources to help you
- We investigate all quality concerns to ensure our products perform to the highest standards

If the product does not perform as described on this datasheet, we will offer a refund or replacement. For full details of the Abpromise, please visit <https://www.abcam.co.jp/abpromise> or contact our technical team.

Terms and conditions

- Guarantee only valid for products bought direct from Abcam or one of our authorized distributors