

# Anti-IgA2 antibody ab88250

画像数 4

### 製品の概要

製品名	Anti-IgA2 antibody
製品の詳細	Mouse polyclonal to IgA2
由来種	Mouse
アプリケーション	<b>適用あり:</b> WB, ICC/IF
種交差性	<b>交差種:</b> Human
免疫原	Recombinant full length protein within Human IgA2. The exact immunogen sequence used to generate this antibody is proprietary information. If additional detail on the immunogen is needed to determine the suitability of the antibody for your needs, please <b><a href="#">contact</a></b> our Scientific Support team to discuss your requirements.
ポジティブ・コントロール	WB: Human colon tissue lysate; Hela nuclear extract; IgA2 transfected 293T cell lysate ICC/IF: HeLa cell
特記事項	<p>The Life Science industry has been in the grips of a reproducibility crisis for a number of years. Abcam is leading the way in addressing this with our range of recombinant monoclonal antibodies and knockout edited cell lines for gold-standard validation. Please check that this product meets your needs before purchasing.</p> <p>If you have any questions, special requirements or concerns, please send us an inquiry and/or contact our Support team ahead of purchase. Recommended alternatives for this product can be found below, along with publications, customer reviews and Q&amp;As</p>

### 製品の特性

製品の状態	Liquid
保存方法	Shipped at 4°C. Upon delivery aliquot and store at -20°C or -80°C. Avoid repeated freeze / thaw cycles.
バッファー	pH: 7.40 Constituent: 100% PBS
精製度	Protein A purified
ポリ/モノ	ポリクローナル
アイソタイプ	IgG

## アプリケーション

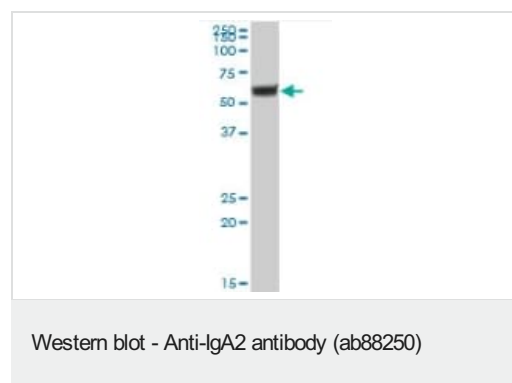
**The Abpromise guarantee** Abpromise保証は、次のテスト済みアプリケーションにおけるab88250の使用に適用されます  
アプリケーションノートには、推奨の開始希釈率がありますが、適切な希釈率につきましてはご確認ください。

アプリケーション	Abreviews	特記事項
WB		Use a concentration of 1 µg/ml. Predicted molecular weight: 53 kDa.
ICC/IF		Use a concentration of 10 µg/ml.

## ターゲット情報

関連性	Ig alpha is the major immunoglobulin class in body secretions. It may serve both to defend against local infection and to prevent access of foreign antigens to the general immunologic system.
細胞内局在	Secreted

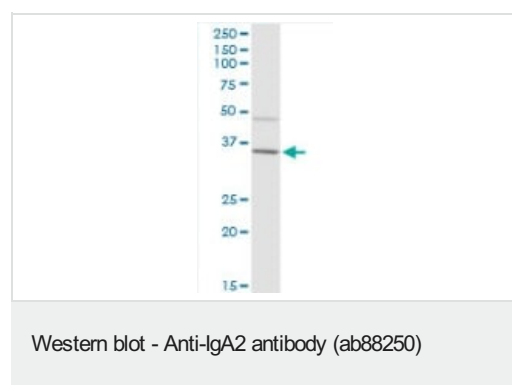
## 画像



Anti-IgA2 antibody (ab88250) at 1 µg/ml + human colon tissue lysate at 50 µg

**Predicted band size:** 53 kDa

**Observed band size:** 53 kDa

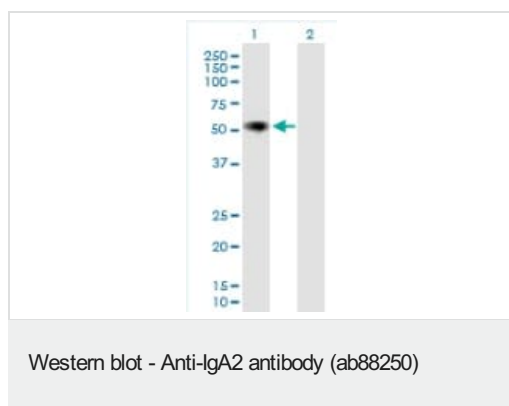


Anti-IgA2 antibody (ab88250) at 1 µg/ml + Hela nuclear extract at 50 µg

**Predicted band size:** 53 kDa

**Observed band size:** 35 kDa

**Additional bands at:** 48 kDa. We are unsure as to the identity of these extra bands.



**All lanes :** Anti-IgA2 antibody (ab88250) at 1 µg/ml

**Lane 1 :** IgA2 transfected 293T cell lysate

**Lane 2 :** Non transfected 293T cell lysate

Lysates/proteins at 50 µg per lane.

**Predicted band size:** 53 kDa

**Observed band size:** 53 kDa



ab88250, at 10 µg/ml, staining IgA2 in HeLa cell by Immunofluorescence.

**Please note:** All products are "FOR RESEARCH USE ONLY. NOT FOR USE IN DIAGNOSTIC PROCEDURES"

### Our Abpromise to you: Quality guaranteed and expert technical support

- Replacement or refund for products not performing as stated on the datasheet
- Valid for 12 months from date of delivery
- Response to your inquiry within 24 hours
- We provide support in Chinese, English, French, German, Japanese and Spanish
- Extensive multi-media technical resources to help you
- We investigate all quality concerns to ensure our products perform to the highest standards

If the product does not perform as described on this datasheet, we will offer a refund or replacement. For full details of the Abpromise, please visit <https://www.abcam.co.jp/abpromise> or contact our technical team.

### Terms and conditions

- Guarantee only valid for products bought direct from Abcam or one of our authorized distributors

