

### Anti-IFT122 antibody ab111838

面格新

医薬用外劇物

#### 製品の概要

製品名	Anti-IFT122 antibody
製品の詳細	Rabbit polyclonal to IFT122
由来種	Rabbit
アプリケーション	<b>適用あり:</b> WB, IHC-P
種交差性	<b>交差種:</b> Human
免疫原	Recombinant fragment, corresponding to a region within amino acids 667-883 of Human IFT122 (AAH03045).
ポジティブ・コントロール	293T whole cell lysate; Hepatoma tissue.
特記事項	<p>The Life Science industry has been in the grips of a reproducibility crisis for a number of years. Abcam is leading the way in addressing this with our range of recombinant monoclonal antibodies and knockout edited cell lines for gold-standard validation. Please check that this product meets your needs before purchasing.</p> <p>If you have any questions, special requirements or concerns, please send us an inquiry and/or contact our Support team ahead of purchase. Recommended alternatives for this product can be found below, along with publications, customer reviews and Q&amp;As</p>

#### 製品の特性

製品の状態	Liquid
保存方法	Shipped at 4°C. Upon delivery aliquot. Store at -20°C or -80°C. Avoid freeze / thaw cycle.
バッファー	<p>pH: 7.00</p> <p>Preservative: 0.01% Thimerosal (merthiolate)</p> <p>Constituents: 1.21% Tris, 0.75% Glycine, 20% Glycerol (glycerin, glycerine)</p>
精製度	Immunogen affinity purified
特記事項(精製)	ab111838 is purified by antigen-affinity chromatography.
ポリ/モノ	ポリクローナル
アイソタイプ	IgG

## アプリケーション

### The Abpromise guarantee

**Abpromise保証は、次のテスト済みアプリケーションにおけるab111838の使用に適用されます**

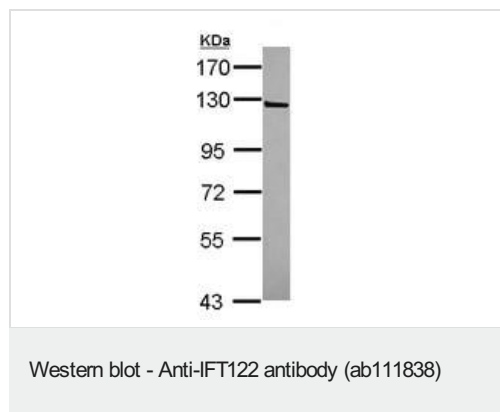
アプリケーションノートには、推奨の開始希釈率がありますが、適切な希釈率につきましてはご確認ください。

アプリケーション	Abreviews	特記事項
WB		1/500 - 1/3000. Predicted molecular weight: 129 kDa.
IHC-P		1/100 - 1/500. Perform heat mediated antigen retrieval with citrate buffer pH 6 before commencing with IHC staining protocol. or Tris-EDTA buffer (pH 8.0)

## ターゲット情報

機能	Required for cilia formation and Shh signaling during neuronal patterning.
組織特異性	Expressed in many tissues. Predominant expression in testis and pituitary.
関連疾患	Defects in IFT122 are a cause of cranioectodermal dysplasia type 1 (CED1) [MIM:218330]. CED1 is a disorder characterized by craniofacial, skeletal and ectodermal abnormalities. Clinical features include dolichocephaly (with or without sagittal suture synostosis), scaphocephaly, short stature, limb shortening, short ribs, narrow chest, brachydactyly, renal failure and hepatic fibrosis, small and abnormally shaped teeth, sparse hair, skin laxity and abnormal nails.
配列類似性	Contains 7 WD repeats.
細胞内局在	Cytoplasm. Cell projection > cilium. Cytoplasm > cytoskeleton > cilium basal body. Localizes to photoreceptor connecting cilia.

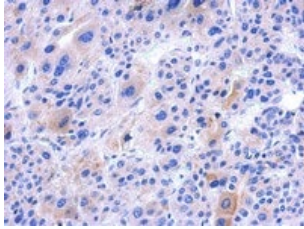
## 画像



Anti-IFT122 antibody (ab111838) at 1/1000 dilution + 293T cell line lysate at 30 µg

**Predicted band size:** 129 kDa

7.5% SDS PAGE



ab111838, at 1/500 dilution, staining IFT122 in Formalin-fixed, Paraffin-embedded Hepatoma tissue by Immunohistochemistry.

Immunohistochemistry (Formalin/PFA-fixed paraffin-embedded sections) - Anti-IFT122 antibody (ab111838)

**Please note:** All products are "FOR RESEARCH USE ONLY. NOT FOR USE IN DIAGNOSTIC PROCEDURES"

### Our Abpromise to you: Quality guaranteed and expert technical support

---

- Replacement or refund for products not performing as stated on the datasheet
- Valid for 12 months from date of delivery
- Response to your inquiry within 24 hours
- We provide support in Chinese, English, French, German, Japanese and Spanish
- Extensive multi-media technical resources to help you
- We investigate all quality concerns to ensure our products perform to the highest standards

If the product does not perform as described on this datasheet, we will offer a refund or replacement. For full details of the Abpromise, please visit <https://www.abcam.co.jp/abpromise> or contact our technical team.

### Terms and conditions

---

- Guarantee only valid for products bought direct from Abcam or one of our authorized distributors