


Anti-IFNGR1 (phospho Y457) antibody ab61062

1 References [画像数 2](#)

製品の概要

製品名	Anti-IFNGR1 (phospho Y457) antibody
製品の詳細	Rabbit polyclonal to IFNGR1 (phospho Y457)
由来種	Rabbit
アプリケーション	適用あり: WB, IHC-P
種交差性	交差種: Human, African green monkey 交差が予測される動物種: Mouse 
免疫原	Synthetic peptide corresponding to Human IFNGR1 aa 400-500 (phospho Y457). Database link: P15260
ポジティブ・コントロール	Human brain tissue, COS7 cell extract.
特記事項	<p>The Life Science industry has been in the grips of a reproducibility crisis for a number of years. Abcam is leading the way in addressing this with our range of recombinant monoclonal antibodies and knockout edited cell lines for gold-standard validation. Please check that this product meets your needs before purchasing.</p> <p>If you have any questions, special requirements or concerns, please send us an inquiry and/or contact our Support team ahead of purchase. Recommended alternatives for this product can be found below, along with publications, customer reviews and Q&As</p>

製品の特性

製品の状態	Liquid
保存方法	Shipped at 4°C. Store at -20°C. Stable for 12 months at -20°C.
バッファー	pH: 7.40 Preservative: 0.02% Sodium azide Constituents: PBS, 50% Glycerol (glycerin, glycerine), 0.87% Sodium chloride
	Without Mg2+ and Ca2+
精製度	Immunogen affinity purified
特記事項 (精製)	ab61062 was affinity-purified from rabbit antiserum by affinity-chromatography using epitope-specific phosphopeptide. The antibody against non-phosphopeptide was removed by chromatography using non-phosphopeptide corresponding to the phosphorylation site.
ポリ/モノ	ポリクローナル

アイソタイプ

lgG

アプリケーション

The Abpromise guarantee

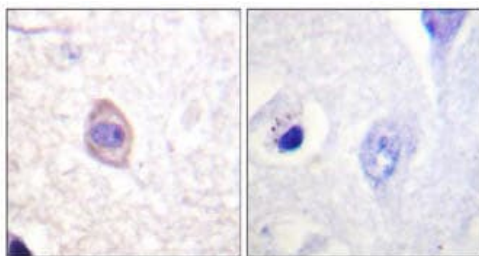
Abpromise保証は、次のテスト済みアプリケーションにおけるab61062の使用に適用されます
アプリケーションノートには、推奨の開始希釈率がありますが、適切な希釈率につきましてはご検討ください。

アプリケーション	Abreviews	特記事項
WB		1/500 - 1/1000. Detects a band of approximately 80 kDa (predicted molecular weight: 54 kDa).
IHC-P		1/50 - 1/100.

ターゲット情報

機能	Receptor for interferon gamma. Two receptors bind one interferon gamma dimer.
関連疾患	Defects in IFNGR1 are a cause of mendelian susceptibility to mycobacterial disease (MSMD) [MIM:209950]; also known as familial disseminated atypical mycobacterial infection. This rare condition confers predisposition to illness caused by moderately virulent mycobacterial species, such as Bacillus Calmette-Guerin (BCG) vaccine and environmental non-tuberculous mycobacteria, and by the more virulent Mycobacterium tuberculosis. Other microorganisms rarely cause severe clinical disease in individuals with susceptibility to mycobacterial infections, with the exception of Salmonella which infects less than 50% of these individuals. The pathogenic mechanism underlying MSMD is the impairment of interferon-gamma mediated immunity whose severity determines the clinical outcome. Some patients die of overwhelming mycobacterial disease with lepromatous-like lesions in early childhood, whereas others develop, later in life, disseminated but curable infections with tuberculoid granulomas. MSMD is a genetically heterogeneous disease with autosomal recessive, autosomal dominant or X-linked inheritance.
配列類似性	Belongs to the type II cytokine receptor family. Contains 2 fibronectin type-III domains. Contains 2 Ig-like C2-type (immunoglobulin-like) domains.
翻訳後修飾	Phosphorylated at Ser/Thr residues.
細胞内局在	Membrane.

画像



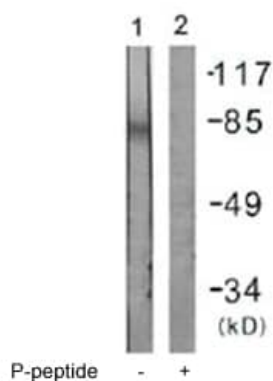
P-peptide

-

+

Immunohistochemistry (Formalin/PFA-fixed paraffin-embedded sections) - Anti-IFNGR1 (phospho Y457) antibody (ab61062)

Immunohistochemistry analysis of paraffin-embedded human brain tissue using IFNGR1 (phospho Y457) antibody (ab61062) at 1/50 - 1/100 dilution, in the presence (right panel) or absence (left panel) of phosphopeptide.



P-peptide

1

2

117

85

49

34

(kDa)

All lanes : Anti-IFNGR1 (phospho Y457) antibody (ab61062) at 1/500 dilution

Lane 1 : COS7 cell extract with no phosphopeptide

Lane 2 : COS7 cell extract with phosphopeptide

Predicted band size: 54 kDa

Observed band size: 80 kDa

Western blot - Anti-IFNGR1 (phospho Y457) antibody (ab61062)

Please note: All products are "FOR RESEARCH USE ONLY. NOT FOR USE IN DIAGNOSTIC PROCEDURES"

Our Abpromise to you: Quality guaranteed and expert technical support

- Replacement or refund for products not performing as stated on the datasheet
- Valid for 12 months from date of delivery
- Response to your inquiry within 24 hours
- We provide support in Chinese, English, French, German, Japanese and Spanish
- Extensive multi-media technical resources to help you
- We investigate all quality concerns to ensure our products perform to the highest standards

If the product does not perform as described on this datasheet, we will offer a refund or replacement. For full details of the Abpromise, please visit <https://www.abcam.co.jp/abpromise> or contact our technical team.

Terms and conditions

- Guarantee only valid for products bought direct from Abcam or one of our authorized distributors