

Anti-IFIT1 antibody [OTI3G8] ab118062

2 References [画像数 8](#)

製品の概要

| | |
|--------------|--|
| 製品名 | Anti-IFIT1 antibody [OTI3G8] |
| 製品の詳細 | Mouse monoclonal [OTI3G8] to IFIT1 |
| 由来種 | Mouse |
| アプリケーション | 適用あり: Flow Cyt (Intra), WB, IHC-P, ICC/IF |
| 種交差性 | 交差種: Human, African green monkey |
| 免疫原 | Recombinant full length protein corresponding to Human IFIT1. Recombinant full length Human IFIT1 produced in HEK293T cells (NP_000899). Database link: P09914 |
| ポジティブ・コントロール | WB: HEK293T cell lysate transfected with pCMV6-ENTRY IFIT1 cDNA. IHC-P: Human liver carcinoma, Human ovary adenocarcinoma, kidney and liver tissues. ICC/IF: HT29 cells and COS7 cells transiently transfected by pCMV6-ENTRY IFIT1 cDNA. Flow Cyt (Intra): HEK293T cells transfected with pCMV6-ENTRY IFIT1 overexpress plasmid |
| 特記事項 | <p>The clone number has been updated from 3G8 to OTI3G8, both clone numbers name the same clone.</p> <p>The Life Science industry has been in the grips of a reproducibility crisis for a number of years. Abcam is leading the way in addressing this with our range of recombinant monoclonal antibodies and knockout edited cell lines for gold-standard validation. Please check that this product meets your needs before purchasing.</p> <p>If you have any questions, special requirements or concerns, please send us an inquiry and/or contact our Support team ahead of purchase. Recommended alternatives for this product can be found below, along with publications, customer reviews and Q&As</p> |

製品の特性

| | |
|-------|--|
| 製品の状態 | Liquid |
| 保存方法 | Shipped at 4°C. Store at +4°C short term (1-2 weeks). Upon delivery aliquot. Store at -20°C. Avoid freeze / thaw cycle. The product can be stored for up to 12 months. |
| バッファー | pH: 7.30 Preservative: 0.02% Sodium azide Constituents: 50% Glycerol, 48% PBS, 1% BSA |
| 精製度 | IgG fraction |

| | |
|----------|---|
| 特記事項(精製) | ab118062 is purified from TCS by affinity chromatography. |
| ポリ/モノ | モノクローナル |
| クローン名 | OTI3G8 |
| アイソタイプ | IgG1 |

アプリケーション

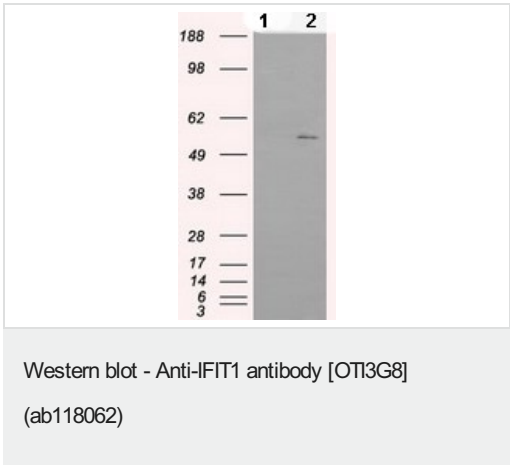
The Abpromise guarantee Abpromise保証は、 次のテスト済みアプリケーションにおけるab118062の使用に適用されます
アプリケーションノートには、推奨の開始希釈率がありますが、適切な希釈率につきましてはご検討ください。

| アプリケーション | Abreviews | 特記事項 |
|------------------|-----------|--|
| Flow Cyt (Intra) | | 1/100. ab170190 - Mouse monoclonal IgG1, is suitable for use as an isotype control with this antibody. |
| WB | | 1/500 - 1/1000. Predicted molecular weight: 55 kDa. |
| IHC-P | | 1/50. |
| ICC/IF | | 1/50 - 1/100. |

ターゲット情報

| | |
|-------|---|
| 配列類似性 | Belongs to the IFIT family. Contains 10 TPR repeats. |
|-------|---|

画像



All lanes : Anti-IFIT1 antibody [OTI3G8] (ab118062) at 1/500 dilution

Lane 1 : HEK293T cell lyaste, transfected with pCMV6-ENTRY control cDNA

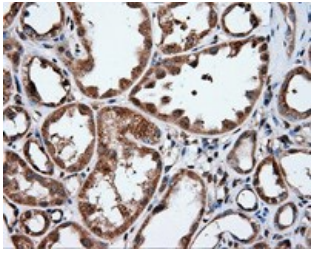
Lane 2 : HEK293T cell lysate, transfected with pCMV6-ENTRY IFIT1 cDNA

Lysates/proteins at 5 µg per lane.

Predicted band size: 55 kDa

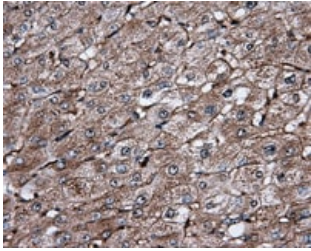
HEK293T cell lysates were generated from transient transfection of

the cDNA clone (RC203320)



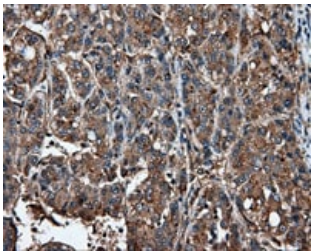
Immunohistochemistry (Formalin/PFA-fixed paraffin-embedded sections) - Anti-IFIT1 antibody [OTI3G8] (ab118062)

ab118062 at 1/50 dilution staining IFIT1 in Paraffin-embedded Human Kidney tissue by Immunohistochemistry.



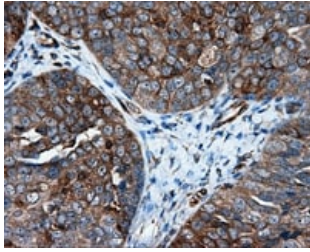
Immunohistochemistry (Formalin/PFA-fixed paraffin-embedded sections) - Anti-IFIT1 antibody [OTI3G8] (ab118062)

ab118062 at 1/50 dilution staining IFIT1 in Paraffin-embedded Human Liver tissue by Immunohistochemistry.



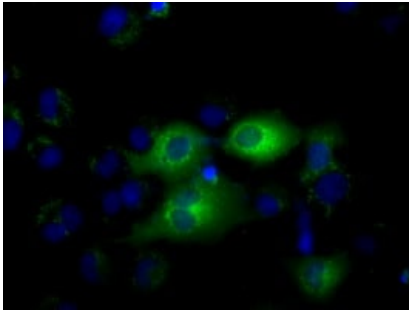
Immunohistochemistry (Formalin/PFA-fixed paraffin-embedded sections) - Anti-IFIT1 antibody [OTI3G8] (ab118062)

ab118062 at 1/50 dilution staining IFIT1 in Paraffin-embedded Human Liver carcinoma tissue by Immunohistochemistry.



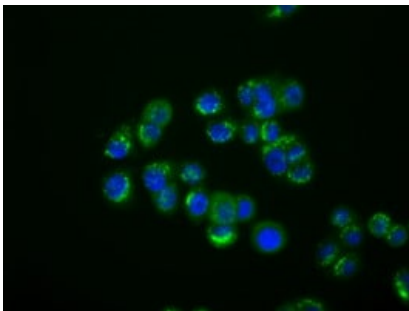
Immunohistochemistry (Formalin/PFA-fixed paraffin-embedded sections) - Anti-IFIT1 antibody [OTI3G8] (ab118062)

ab118062 at 1/50 dilution staining IFIT1 in Paraffin-embedded Human Ovary adenocarcinoma tissue by Immunohistochemistry.



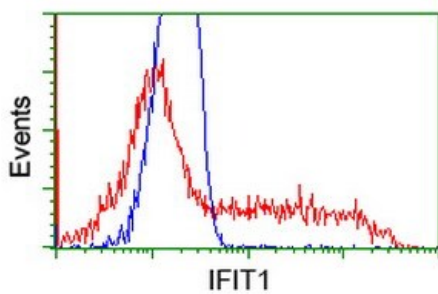
Immunocytochemistry/ Immunofluorescence - Anti-IFIT1 antibody [OTI3G8] (ab118062)

ab118062 at 1/50 dilution staining IFIT1 in COS7 cells transiently transfected by pCMV6-ENTRY IFIT1 by Immunofluorescence.



Immunocytochemistry/ Immunofluorescence - Anti-IFIT1 antibody [OTI3G8] (ab118062)

ab118062 at 1/50 dilution staining IFIT1 in HT29 cells by Immunofluorescence.



Flow Cytometry (Intracellular) - Anti-IFIT1 antibody [OTI3G8] (ab118062)

ab118062 at 1/100 dilution staining IFIT1 in HEK293T cells transfected with either pCMV6-ENTRY IFIT1 overexpress plasmid(Red) or empty vector control plasmid(Blue) by Flow Cytometry (Intracellular).

Please note: All products are "FOR RESEARCH USE ONLY. NOT FOR USE IN DIAGNOSTIC PROCEDURES"

Our Abpromise to you: Quality guaranteed and expert technical support

- Replacement or refund for products not performing as stated on the datasheet
- Valid for 12 months from date of delivery
- Response to your inquiry within 24 hours
- We provide support in Chinese, English, French, German, Japanese and Spanish
- Extensive multi-media technical resources to help you
- We investigate all quality concerns to ensure our products perform to the highest standards

If the product does not perform as described on this datasheet, we will offer a refund or replacement. For full details of the Abpromise, please visit <https://www.abcam.co.jp/abpromise> or contact our technical team.

Terms and conditions

- Guarantee only valid for products bought direct from Abcam or one of our authorized distributors