



### Anti-IDH2 antibody [5F11] ab55271

KO 評価済

39 References 画像数 6

#### 製品の概要

製品名	Anti-IDH2 antibody [5F11]
製品の詳細	Mouse monoclonal [5F11] to IDH2
由来種	Mouse
アプリケーション	適用あり: IHC-P, Flow Cyt, ICC/IF, WB
種交差性	交差種: Human, Recombinant fragment
免疫原	<p>Recombinant fragment corresponding to Human IDH2 aa 354-451.</p> <p>Sequence:</p> <p>HYREHQKGRPTSTNPIASIFAWTRGLEHRGKLDGNQDLIRFA            QMLEKVCV            ETVESGAMTKDLAGCIHGLSNVKLNEHFLNTTDFLDTIKSNL            DRALGR</p> <p>Database link: <a href="#">P48735</a></p> <p> <a href="#">Run BLAST with</a>  <a href="#">Run BLAST with</a></p>
ポジティブ・コントロール	IHC-P: Human colon. Flow cyt: MCF7 cells. WB: Transfected 293T cells.
特記事項	<p>This product was changed from ascites to tissue culture supernatant on 13<sup>th</sup> Feb 2019. Please note that the dilutions may need to be adjusted accordingly. If you have any questions, please do not hesitate to contact our scientific support team.</p> <p>The Life Science industry has been in the grips of a reproducibility crisis for a number of years. Abcam is leading the way in addressing this with our range of recombinant monoclonal antibodies and knockout edited cell lines for gold-standard validation. Please check that this product meets your needs before purchasing.</p> <p>If you have any questions, special requirements or concerns, please send us an inquiry and/or contact our Support team ahead of purchase. Recommended alternatives for this product can be found below, along with publications, customer reviews and Q&amp;As</p>

#### 製品の特性

製品の状態	Liquid
保存方法	Shipped at 4°C. Upon delivery aliquot and store at -20°C or -80°C. Avoid repeated freeze / thaw

	cycles.
バッファー	pH: 7.4
精製度	Tissue culture supernatant
ポリ/モノ	モノクローナル
クローン名	5F11
アイソタイプ	IgG1
軽鎖の種類	kappa

## アプリケーション

**The Abpromise guarantee**      **Abpromise保証は、次のテスト済みアプリケーションにおけるab55271の使用に適用されます**

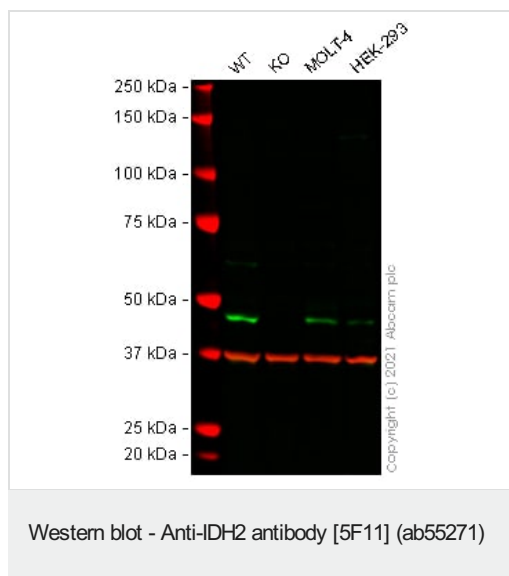
アプリケーションノートには、推奨の開始希釈率がありますが、適切な希釈率につきましてはご検討ください。

アプリケーション	Abreviews	特記事項
IHC-P		Use at an assay dependent concentration.
Flow Cyt		Use at an assay dependent concentration. <b>ab170190</b> - Mouse monoclonal IgG1, is suitable for use as an isotype control with this antibody.
ICC/IF		Use at an assay dependent concentration.
WB		Use at an assay dependent concentration. This antibody has only been tested in WB against the recombinant fragment used as immunogen. We have no data on the detection of endogenous protein.

## ターゲット情報

機能	Plays a role in intermediary metabolism and energy production. It may tightly associate or interact with the pyruvate dehydrogenase complex.
関連疾患	D-2-hydroxyglutaric aciduria 2 Glioma etic variations are associated with cartilaginous tumors such as enchondroma or chondrosarcoma.
配列類似性	Belongs to the isocitrate and isopropylmalate dehydrogenases family.
翻訳後修飾	Acetylation at Lys-413 dramatically reduces catalytic activity. Deacetylated by SIRT3.
細胞内局在	Mitochondrion.

## 画像



**All lanes :** Anti-IDH2 antibody [5F11] (ab55271) at 1/1000 dilution

**Lane 1 :** Wild-type Jurkat cell lysate

**Lane 2 :** IDH2 knockout Jurkat cell lysate

**Lane 3 :** MOLT-4 cell lysate

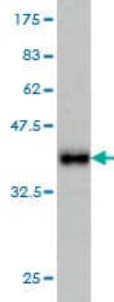
**Lane 4 :** HEK-293 cell lysate

Lysates/proteins at 20 µg per lane.

Performed under reducing conditions.

**Observed band size:** 48 kDa

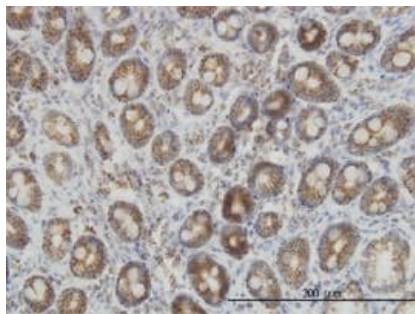
False colour image of Western blot: Anti-IDH2 antibody [5F11] staining at 1/1000 dilution, shown in green; Rabbit Anti-GAPDH antibody [EPR16891] ([ab181602](#)) loading control staining at 1/20000 dilution, shown in red. In Western blot, ab55271 was shown to bind specifically to IDH2. A band was observed at 48 kDa in wild-type Jurkat cell lysates with no signal observed at this size in IDH2 knockout cell line [ab282331](#) (knockout cell lysate [ab283148](#)). To generate this image, wild-type and IDH2 knockout Jurkat cell lysates were analysed. First, samples were run on an SDS-PAGE gel then transferred onto a nitrocellulose membrane. Membranes were blocked in 3 % milk in TBS-0.1 % Tween® 20 (TBS-T) before incubation with primary antibodies overnight at 4°C. Blots were washed four times in TBS-T, incubated with secondary antibodies for 1 h at room temperature, washed again four times then imaged. Secondary antibodies used were Goat anti-Mouse IgG H&L (IRDye® 800CW) preabsorbed ([ab216772](#)) and Goat anti-Rabbit IgG H&L (IRDye® 680RD) preabsorbed ([ab216777](#)) at 1/20000 dilution.



Western blot - Anti-IDH2 antibody [5F11] (ab55271)

Western blot against tagged recombinant protein immunogen using ab55271 IDH2 antibody at 1ug/ml. Predicted band size of immunogen is 37 kDa

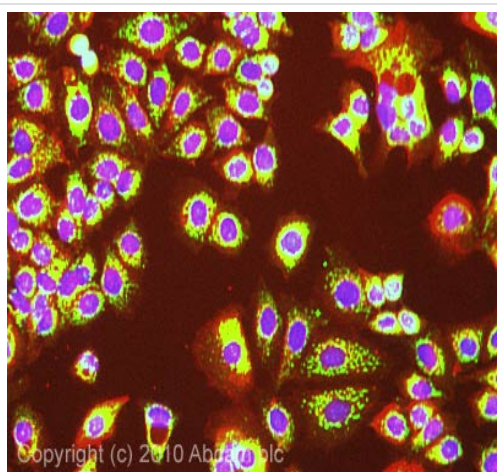
This image was generated using the ascites version of the product.



Immunohistochemistry (Formalin/PFA-fixed paraffin-embedded sections) - Anti-IDH2 antibody [5F11] (ab55271)

IDH2 antibody (ab55271) used in immunohistochemistry at 3ug/ml on formalin fixed and paraffin embedded human colon.

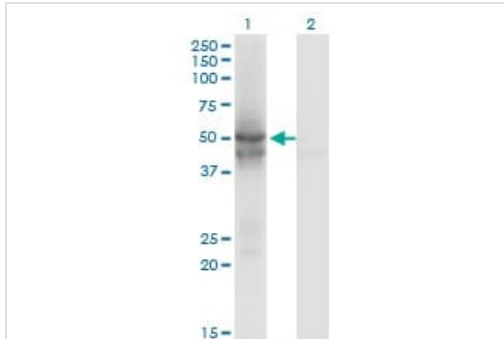
This image was generated using the ascites version of the product.



Immunocytochemistry/ Immunofluorescence - Anti-IDH2 antibody [5F11] (ab55271)

ICC/IF image of ab55271 stained Mcf7 cells. The cells were 100% methanol fixed (5 min) and then incubated in 1%BSA / 10% normal goat serum / 0.3M glycine in 0.1% PBS-Tween for 1h to permeabilise the cells and block non-specific protein-protein interactions. The cells were then incubated with the antibody (ab55271, 10µg/ml) overnight at +4°C. The secondary antibody (green) was Alexa Fluor® 488 goat anti-mouse IgG (H+L) used at a 1/1000 dilution for 1h. Alexa Fluor® 594 WGA was used to label plasma membranes (red) at a 1/200 dilution for 1h. DAPI was used to stain the cell nuclei (blue) at a concentration of 1.43µM.

This image was generated using the ascites version of the product.



Western blot - Anti-IDH2 antibody [5F11] (ab55271)

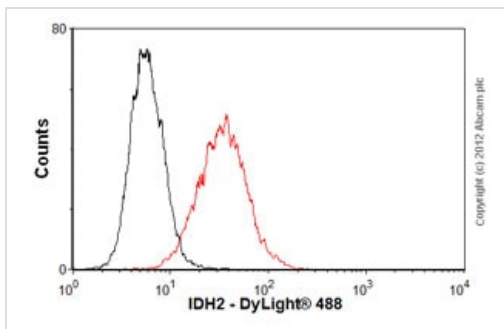
**All lanes :** Anti-IDH2 antibody [5F11] (ab55271)

**Lane 1 :** IDH2 in transfected 293T cell line

**Lane 2 :** Non-transfected lysate

The blocking agent used is 5% milk.

This image was generated using the ascites version of the product.



Flow Cytometry - Anti-IDH2 antibody [5F11]  
(ab55271)

Overlay histogram showing MCF7 cells stained with ab55271 (red line). The cells were fixed with 4% paraformaldehyde (10 min) and then permeabilized with 0.1% PBS-Tween for 20 min. The cells were then incubated in 1x PBS / 10% normal goat serum / 0.3M glycine to block non-specific protein-protein interactions followed by the antibody (ab55271, 1 µg/1x10<sup>6</sup> cells) for 30 min at 22°C. The secondary antibody used was DyLight® 488 goat anti-mouse IgG (H+L) ([ab96879](#)) at 1/500 dilution for 30 min at 22°C. Isotype control antibody (black line) was mouse IgG1 [ICIGG1] ([ab91353](#), 2 µg/1x10<sup>6</sup> cells) used under the same conditions. Acquisition of >5,000 events was performed. This antibody gave a positive signal in MCF7 cells fixed with 80% methanol (5 min)/permeabilized with 0.1% PBS-Tween for 20 min used under the same conditions.

This image was generated using the ascites version of the product.

**Please note:** All products are "FOR RESEARCH USE ONLY. NOT FOR USE IN DIAGNOSTIC PROCEDURES"

### Our Promise to you: Quality guaranteed and expert technical support

- Replacement or refund for products not performing as stated on the datasheet
- Valid for 12 months from date of delivery
- Response to your inquiry within 24 hours
- We provide support in Chinese, English, French, German, Japanese and Spanish
- Extensive multi-media technical resources to help you

- We investigate all quality concerns to ensure our products perform to the highest standards

If the product does not perform as described on this datasheet, we will offer a refund or replacement. For full details of the Abpromise, please visit <https://www.abcam.co.jp/abpromise> or contact our technical team.

### **Terms and conditions**

---

- Guarantee only valid for products bought direct from Abcam or one of our authorized distributors