

### Anti-ID2 antibody [2457C5a] ab53545

★★★★★ [1 Abreviews](#) [1 References](#) [画像数 1](#)

#### 製品の概要

製品名	Anti-ID2 antibody [2457C5a]
製品の詳細	Mouse monoclonal [2457C5a] to ID2
由来種	Mouse
アプリケーション	<b>適用あり:</b> WB
種交差性	<b>交差種:</b> Recombinant fragment
免疫原	Recombinant human ID2
特記事項	<p>The Life Science industry has been in the grips of a reproducibility crisis for a number of years. Abcam is leading the way in addressing this with our range of recombinant monoclonal antibodies and knockout edited cell lines for gold-standard validation. Please check that this product meets your needs before purchasing.</p> <p>If you have any questions, special requirements or concerns, please send us an inquiry and/or contact our Support team ahead of purchase. Recommended alternatives for this product can be found below, along with publications, customer reviews and Q&amp;As</p>

#### 製品の特性

製品の状態	Liquid
保存方法	Shipped at 4°C. Store at +4°C short term (1-2 weeks). Upon delivery aliquot. Store at -20°C long term.
バッファー	<p>pH: 7.40</p> <p>Preservative: 0.05% Sodium azide</p> <p>Constituents: 1% BSA, 0.03% Potassium phosphate, 0.812% Sodium chloride, 0.1312% Sodium phosphate, 0.0225% Potassium chloride, PBS</p>
精製度	Protein G purified
特記事項 (精製)	ab53545 was purified using protein G column chromatography from culture supernatant of hybridoma cultured in a medium containing bovine IgG-depleted (approximately 95%) fetal bovine serum and filtered through a 0.22µm membrane.
ポリ/モノ	モノクローナル
クローン名	2457C5a
アイソタイプ	IgG1

## アプリケーション

### The Abpromise guarantee

**Abpromise保証は、次のテスト済みアプリケーションにおけるab53545の使用に適用されます**

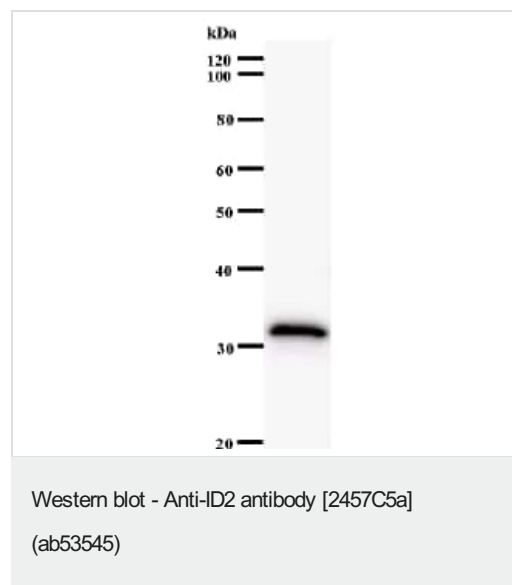
アプリケーションノートには、推奨の開始希釈率がありますが、適切な希釈率につきましてはご検討ください。

アプリケーション	Abreviews	特記事項
WB	★★★★★ (1)	Use at an assay dependent concentration. Detects a band of approximately 32 kDa (predicted molecular weight: 15 kDa).

## ターゲット情報

機能	ID (inhibitor of DNA binding) HLH proteins lack a basic DNA-binding domain but are able to form heterodimers with other HLH proteins, thereby inhibiting DNA binding. ID-2 may be an inhibitor of tissue-specific gene expression.
組織特異性	Highly expressed in early fetal tissues, including those of the central nervous system.
配列類似性	Contains 1 basic helix-loop-helix (bHLH) domain.
発生段階	Found in most early fetal tissues but not in the corresponding mature tissues.
細胞内局在	Cytoplasm. Nucleus.

## 画像



Anti-ID2 antibody [2457C5a] (ab53545) + immunised recombinant protein

**Predicted band size:** 15 kDa

**Observed band size:** 32 kDa

**Please note:** All products are "FOR RESEARCH USE ONLY. NOT FOR USE IN DIAGNOSTIC PROCEDURES"

## Our Abpromise to you: Quality guaranteed and expert technical support

- Replacement or refund for products not performing as stated on the datasheet
- Valid for 12 months from date of delivery
- Response to your inquiry within 24 hours

- We provide support in Chinese, English, French, German, Japanese and Spanish
- Extensive multi-media technical resources to help you
- We investigate all quality concerns to ensure our products perform to the highest standards

If the product does not perform as described on this datasheet, we will offer a refund or replacement. For full details of the Abpromise, please visit <https://www.abcam.co.jp/abpromise> or contact our technical team.

#### **Terms and conditions**

---

- Guarantee only valid for products bought direct from Abcam or one of our authorized distributors